

The Manhattan.



CLASSIC



EXECUTIVE



MANOR



The Manhattan design range is exclusive to G.J. Gardner Homes, offering spacious family living. With up to six bedrooms, five bathrooms and several living space options, the Manhattan designs are the ultimate large family home.



As soon as you enter the home you can't help but dream of the possibilities it allows - comfort and functionality for large families, hosting guests and endless entertaining. Keeping the main living downstairs and bedrooms upstairs allows for added privacy, with the main boasting as its own oasis with all the extra like a retreat, double ensuite and a walk-in-robe large enough for the biggest shoe collection. Light and space have been maximised throughout this home, making it entirely comfortable and liveable.

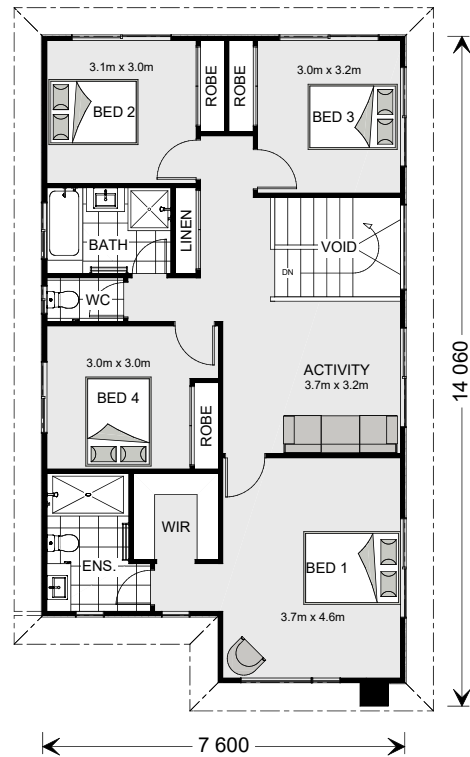
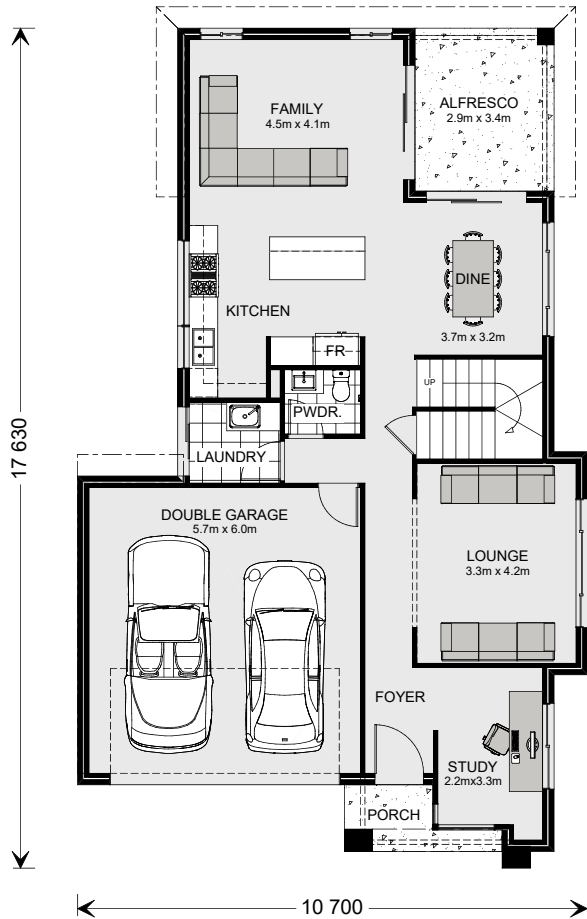
Manhattan 247.



Suits standard lot width: 12.5m +

Floor Areas - Resort Façade

Living:	190.0 m ²	Porch:	3.3 m ²
Garage:	37.6 m ²	Void	6.0 m ²
Alfresco:	10.0 m ²	Total:	246.9 m²



Manhattan 275.



Suits standard lot width: 12.5m +

Floor Areas - Resort Façade

Living: 217.3 m²

Garage: 37.1 m²

Alfresco: 11.2 m²

Portico: 3.2 m²

Void 6.0 m²

Total: 274.8 m²



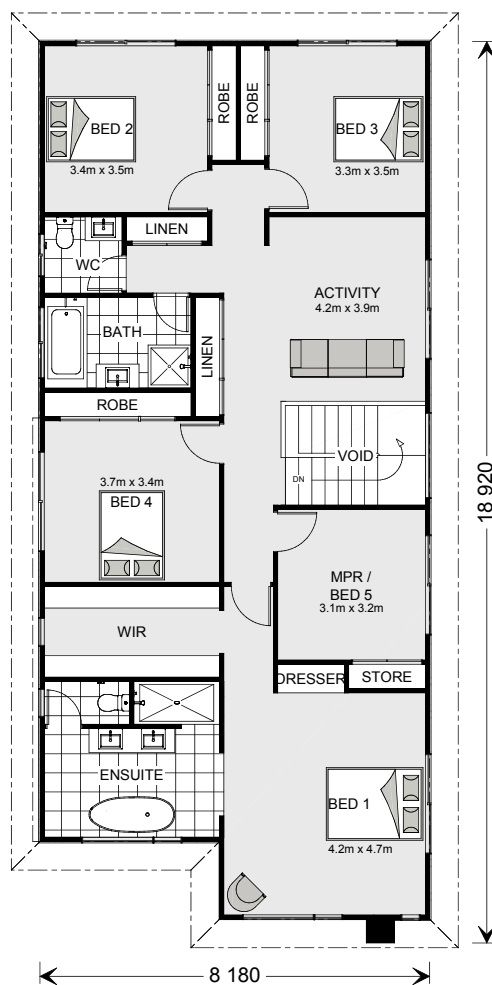
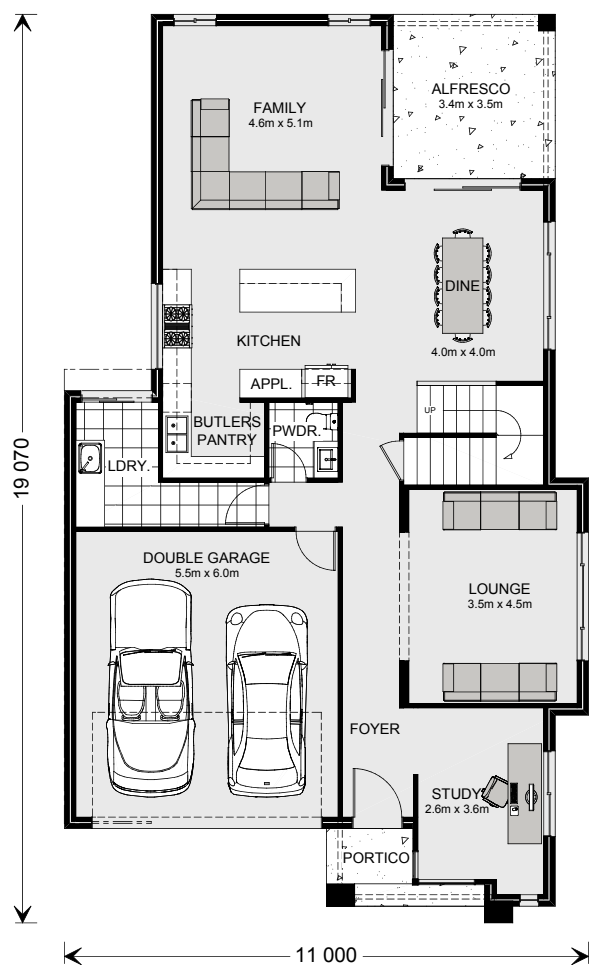
Manhattan 318.

5  2.5  2 

Suits standard lot width: 12.5m +

Floor Areas - Resort Façade

Living:	259.8 m ²	Portico:	3.7 m ²
Garage:	35.8 m ²	Void	6.5 m ²
Alfresco:	11.7 m ²	Total:	317.5 m²



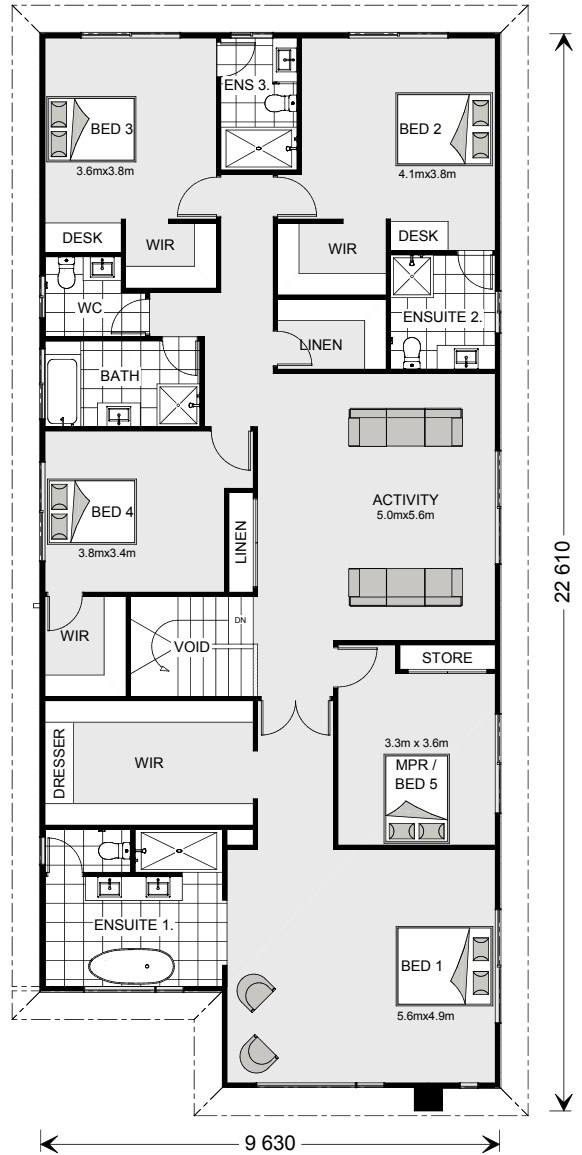
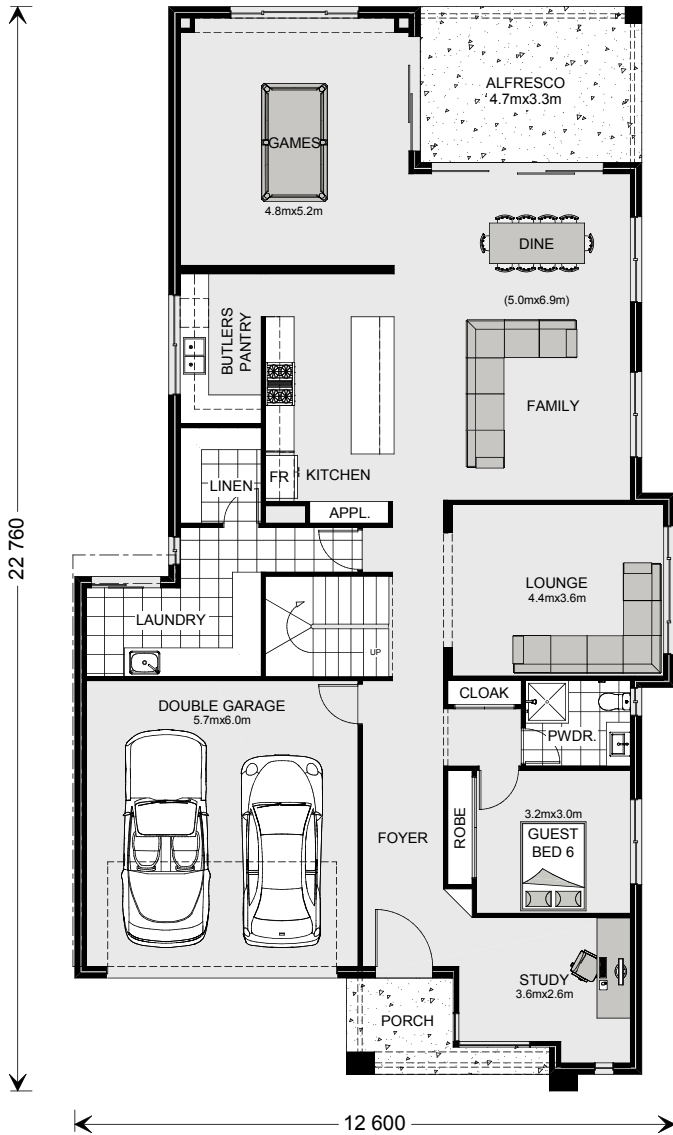
Manhattan 440.



Suits standard lot width: 14m +

Floor Areas - Resort Façade

Living:	376.6 m ²	Porch:	5.8 m ²
Garage:	37.1 m ²	Void	5.5 m ²
Alfresco:	15.2 m ²	Total:	440.2 m²



**Your trusted
local builder.**

📞 **132 789** | gjjgardner.com.au