

**G.J. Gardner.**  
**HOMES**



**Carlton 200**

🛏️ 4 | 🍽️ 2.5 | 🚗 2

# Carlton 200

4 | 2.5 | 2

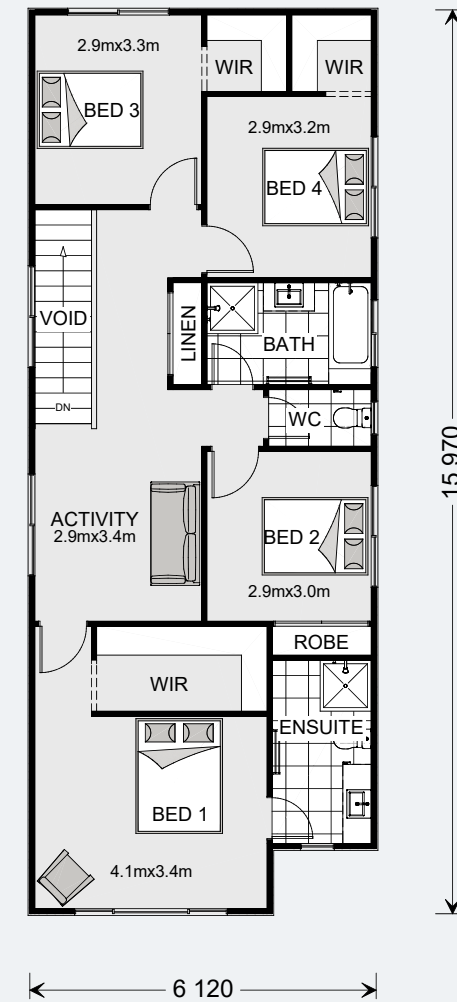
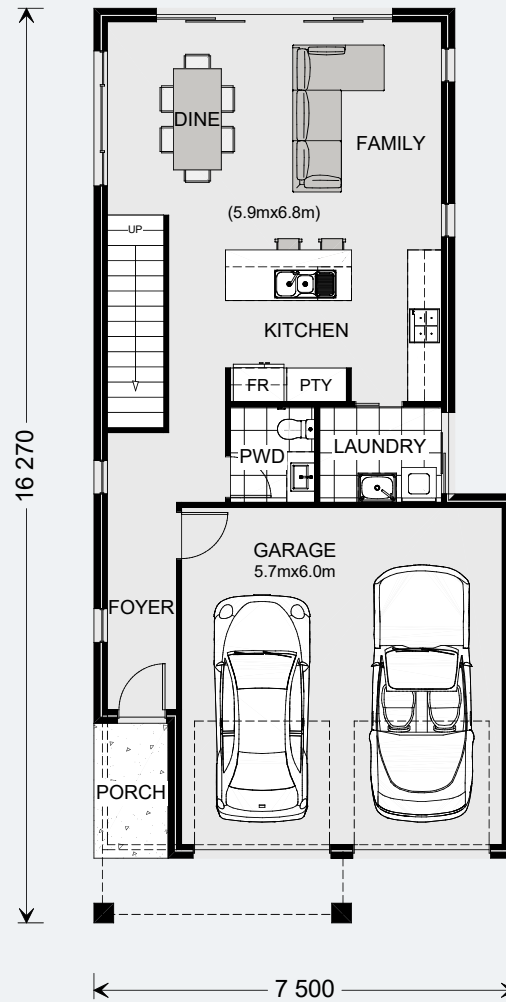
## Ground Floor

Living	63.0 m <sup>2</sup>
Garage	37.9 m <sup>2</sup>
Porch	3.2 m <sup>2</sup>
<b>Total</b>	<b>104.1 m<sup>2</sup></b>

## Upper Floor

Living	91.8 m <sup>2</sup>
Void	3.8 m <sup>2</sup>
<b>Total</b>	<b>95.6 m<sup>2</sup></b>
<b>Grand Total</b>	<b>199.7 m<sup>2</sup></b>

200 Classic Floorplan



Images in this brochure may depict landscaping, fences and upgraded fixtures, features or finishes which are not included. For availability and pricing of these items please discuss with your new home consultant.



## Carlton 200

The Carlton design offers individually crafted facades that will inspire you by providing a choice of homes that reflect your personal lifestyle and preferences.

The Carlton, exclusive to G.J. Gardner Homes is designed for metro sites. This compact double storey home features 4 bedrooms with walk in robes, activity space and open plan living area; you are sure to find a space to meet your needs.

On the ground floor, entertain family and friends in the open plan living area including a large gourmet Kitchen that overlooks the family and dining spaces ensuring everyone feels connected. When personal time is needed head upstairs where the activity room, four bedrooms including a master suite with Ensuite and walk in robe and a family bathroom complete the home.

Images in this brochure may depict landscaping, fences and upgraded fixtures, features or finishes which are not included. For availability and pricing of these items please discuss with your new home consultant.





# Carlton 200

ENSUITE



Images in this brochure may depict landscaping, fences and upgraded fixtures, features or finishes which are not included. For availability and pricing of these items please discuss with your new home consultant.

# Carlton 200

## MASTER BEDROOM



Images in this brochure may depict landscaping, fences and upgraded fixtures, features or finishes which are not included. For availability and pricing of these items please discuss with your new home consultant.



# Carlton 200

## KITCHEN



Images in this brochure may depict landscaping, fences and upgraded fixtures, features or finishes which are not included. For availability and pricing of these items please discuss with your new home consultant.

# Carlton 200

ACTIVITY



Images in this brochure may depict landscaping, fences and upgraded fixtures, features or finishes which are not included. For availability and pricing of these items please discuss with your new home consultant.



# Carlton 200

URBAN



Images in this brochure may depict landscaping, fences and upgraded fixtures, features or finishes which are not included. For availability and pricing of these items please discuss with your new home consultant.



# Carlton 200

EXECUTIVE



Images in this brochure may depict landscaping, fences and upgraded fixtures, features or finishes which are not included. For availability and pricing of these items please discuss with your new home consultant.



# Carlton 200

BEACH



Images in this brochure may depict landscaping, fences and upgraded fixtures, features or finishes which are not included. For availability and pricing of these items please discuss with your new home consultant.



# Carlton 200

CLASSIC



Images in this brochure may depict landscaping, fences and upgraded fixtures, features or finishes which are not included. For availability and pricing of these items please discuss with your new home consultant.



# Carlton 200

HAMPTONS



Images in this brochure may depict landscaping, fences and upgraded fixtures, features or finishes which are not included. For availability and pricing of these items please discuss with your new home consultant.



# Carlton 200

RESORT



Images in this brochure may depict landscaping, fences and upgraded fixtures, features or finishes which are not included. For availability and pricing of these items please discuss with your new home consultant.