

**G.J. Gardner.**  
**HOMES**



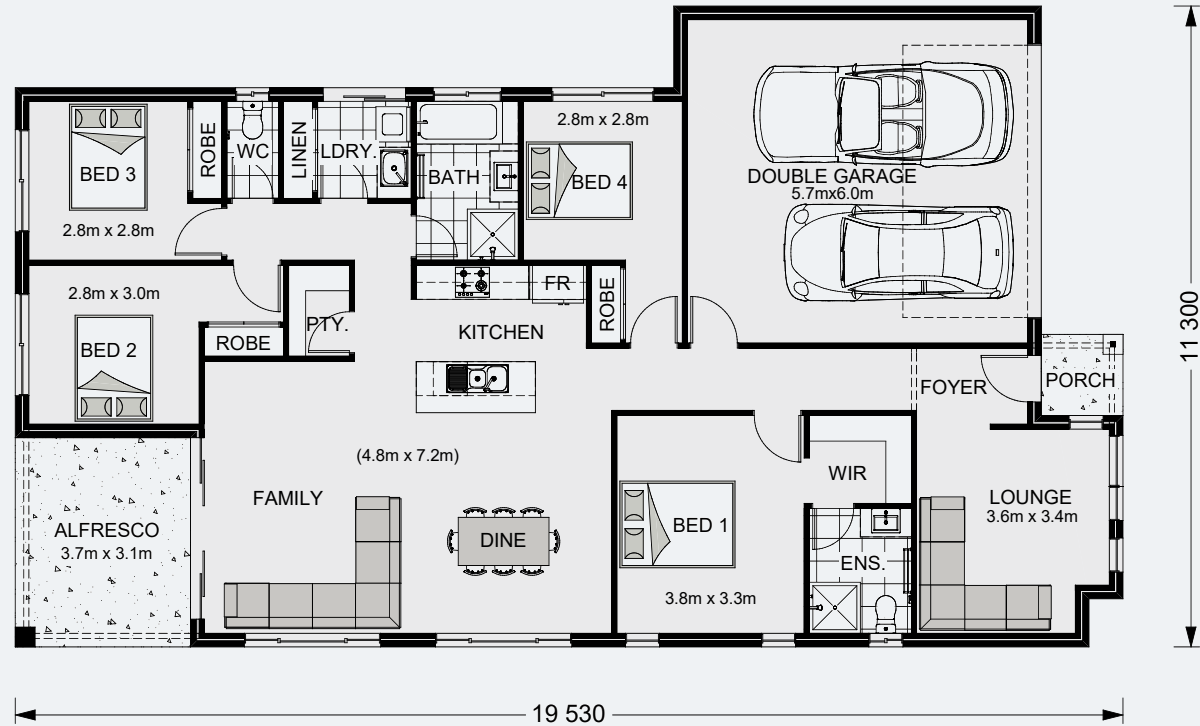
**Claremont**

# Claremont 195

4 | 2 | 2

## Floor Area

Living	144.2 m <sup>2</sup>
Garage	37.4 m <sup>2</sup>
Alfresco	11.4 m <sup>2</sup>
Porch	2.1 m <sup>2</sup>
<b>Total</b>	<b>195.1 m<sup>2</sup></b>



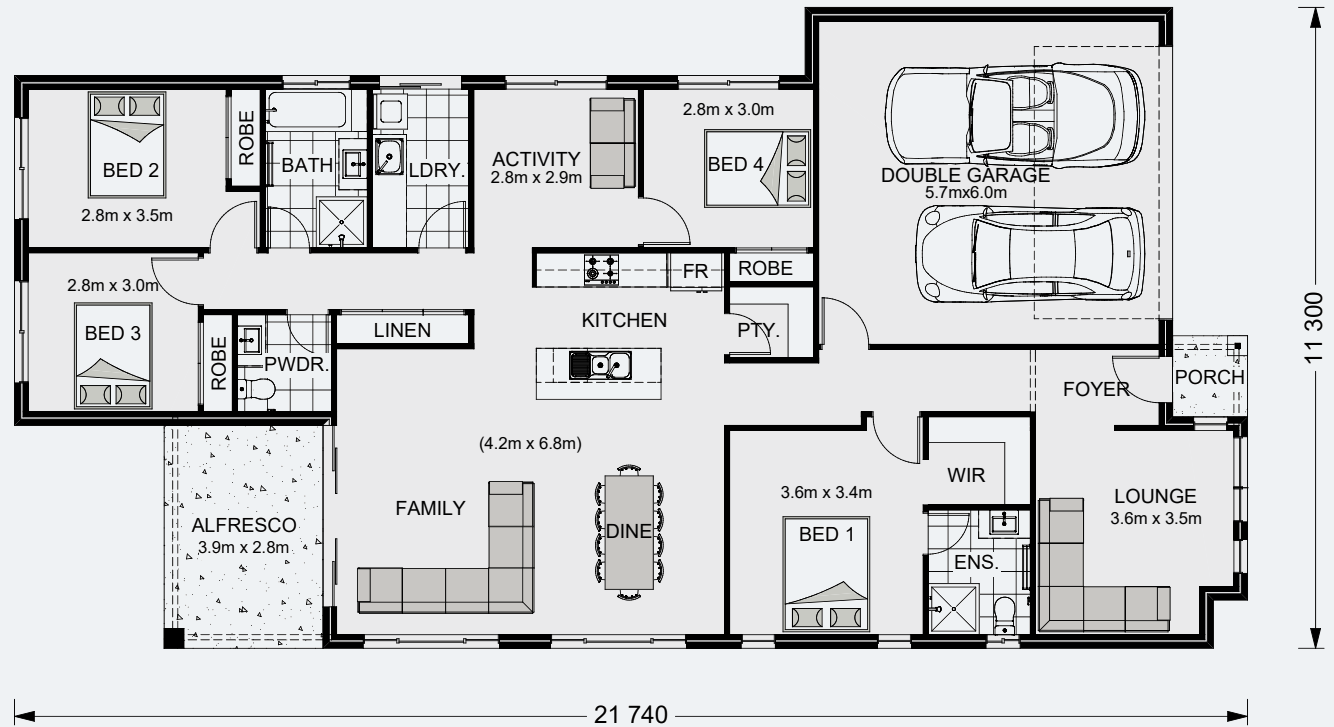
Images in this brochure may depict landscaping, fences and upgraded fixtures, features or finishes which are not included. For availability and pricing of these items please discuss with your new home consultant.

# Claremont 210

4 | 2.5 | 2

## Floor Area

Living	160.1 m <sup>2</sup>
Garage	37.4 m <sup>2</sup>
Alfresco	11.0 m <sup>2</sup>
Porch	1.9 m <sup>2</sup>
<b>Total</b>	<b>210.4 m<sup>2</sup></b>



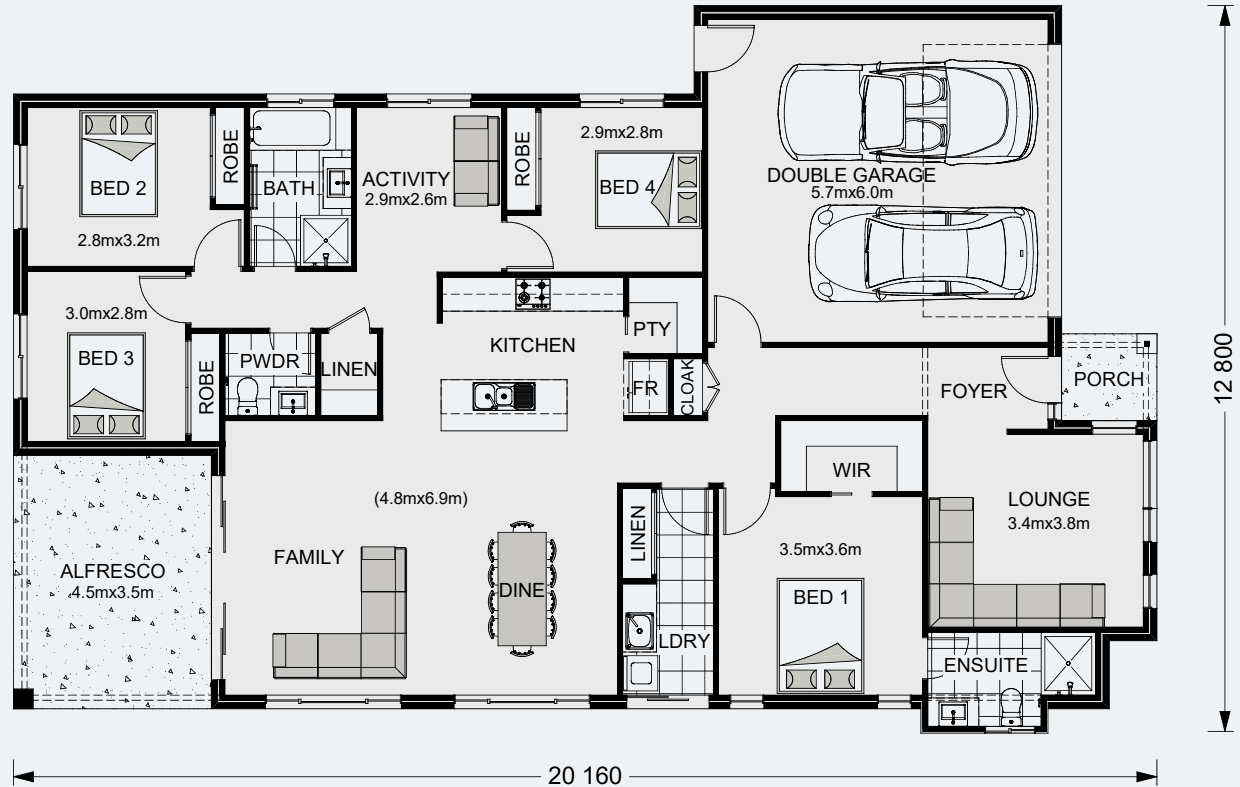
Images in this brochure may depict landscaping, fences and upgraded fixtures, features or finishes which are not included. For availability and pricing of these items please discuss with your new home consultant.

# Claremont 221

4 | 2.5 | 2

## Floor Area

Living	165.7 m <sup>2</sup>
Garage	37.5 m <sup>2</sup>
Alfresco	15.6 m <sup>2</sup>
Porch	2.6 m <sup>2</sup>
<b>Total</b>	<b>221.4 m<sup>2</sup></b>



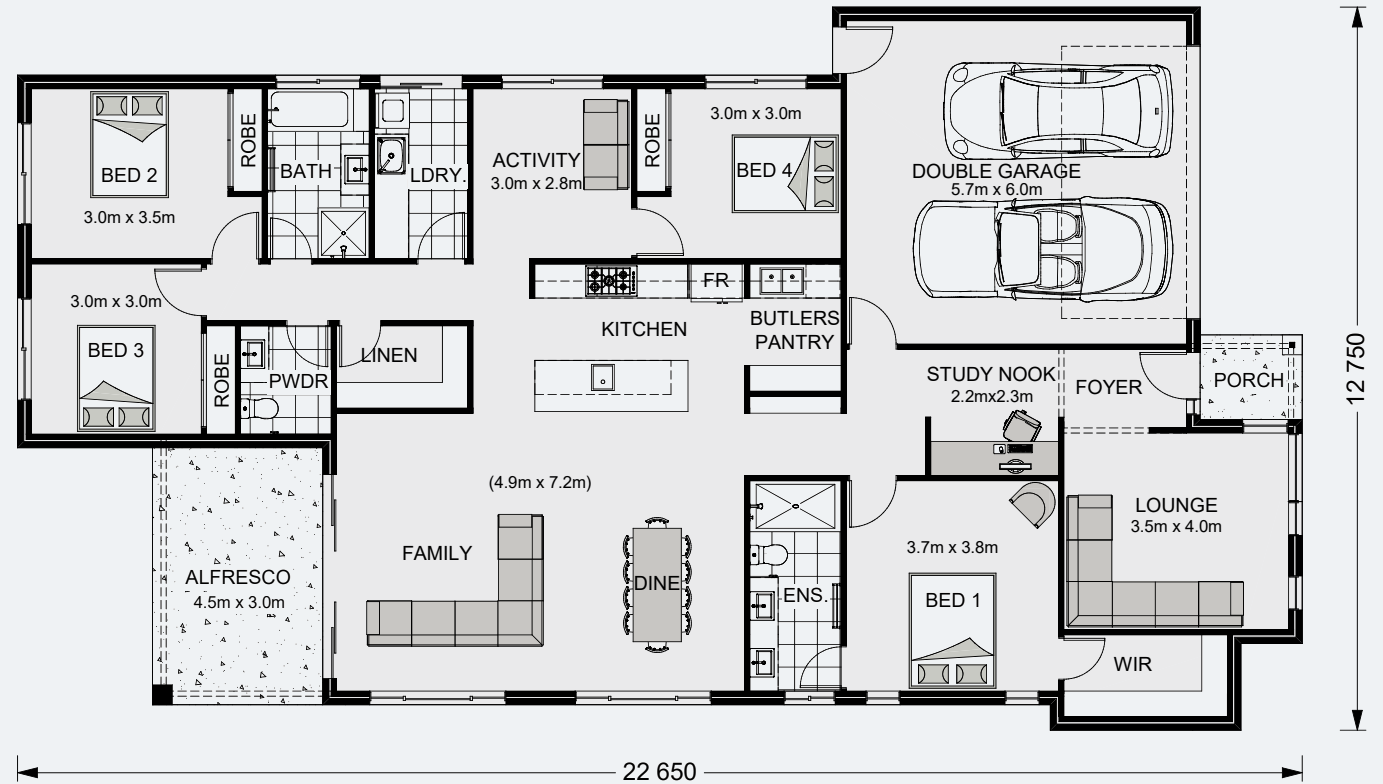
Images in this brochure may depict landscaping, fences and upgraded fixtures, features or finishes which are not included. For availability and pricing of these items please discuss with your new home consultant.

# Claremont 240

4 | 2.5 | 2

## Floor Area

Living	186.9 m <sup>2</sup>
Garage	37.3 m <sup>2</sup>
Alfresco	13.6 m <sup>2</sup>
Porch	2.7 m <sup>2</sup>
<b>Total</b>	<b>240.5 m<sup>2</sup></b>



Images in this brochure may depict landscaping, fences and upgraded fixtures, features or finishes which are not included. For availability and pricing of these items please discuss with your new home consultant.

# Claremont

Bringing everyone together with a clever layout and beautifully appointed features, the Claremont designs offer an immaculately harmonised home for the modern family.

Three separate living zones each with flawless features provides a space for any occasion. Entertaining is made easy with the open plan living zone consisting of family, dining and kitchen with butler's pantry that fills the centre of the home and flows to the outdoor covered alfresco. The kids will love the separate zone dedicated to them with activity room and family bathroom. The master bedroom is situated at the front of the home, separate from the other bedrooms delivering extra privacy and is equipped with a well-appointed ensuite and walk in robe.

A Study nook and formal lounge completes the home's functionality for the needs of today's families.

Images in this brochure may depict landscaping, fences and upgraded fixtures, features or finishes which are not included. For availability and pricing of these items please discuss with your new home consultant.



# Claremont

## MASTER BEDROOM



Images in this brochure may depict landscaping, fences and upgraded fixtures, features or finishes which are not included. For availability and pricing of these items please discuss with your new home consultant.

# Claremont

## BEDROOM



Images in this brochure may depict landscaping, fences and upgraded fixtures, features or finishes which are not included. For availability and pricing of these items please discuss with your new home consultant.



# Claremont

## DINING



Images in this brochure may depict landscaping, fences and upgraded fixtures, features or finishes which are not included. For availability and pricing of these items please discuss with your new home consultant.

# Claremont

## ENSUITE



Images in this brochure may depict landscaping, fences and upgraded fixtures, features or finishes which are not included. For availability and pricing of these items please discuss with your new home consultant.

# Claremont

LAUNDRY



Images in this brochure may depict landscaping, fences and upgraded fixtures, features or finishes which are not included. For availability and pricing of these items please discuss with your new home consultant.

# Claremont

URBAN



Images in this brochure may depict landscaping, fences and upgraded fixtures, features or finishes which are not included. For availability and pricing of these items please discuss with your new home consultant.

# Claremont

EXECUTIVE



Images in this brochure may depict landscaping, fences and upgraded fixtures, features or finishes which are not included. For availability and pricing of these items please discuss with your new home consultant.

# Claremont

BEACH



Images in this brochure may depict landscaping, fences and upgraded fixtures, features or finishes which are not included. For availability and pricing of these items please discuss with your new home consultant.

# Claremont

CLASSIC



Images in this brochure may depict landscaping, fences and upgraded fixtures, features or finishes which are not included. For availability and pricing of these items please discuss with your new home consultant.

# Claremont

HAMPTONS



Images in this brochure may depict landscaping, fences and upgraded fixtures, features or finishes which are not included. For availability and pricing of these items please discuss with your new home consultant.



# Claremont

RESORT



Images in this brochure may depict landscaping, fences and upgraded fixtures, features or finishes which are not included. For availability and pricing of these items please discuss with your new home consultant.