

**G.J. Gardner.**  
**HOMES**



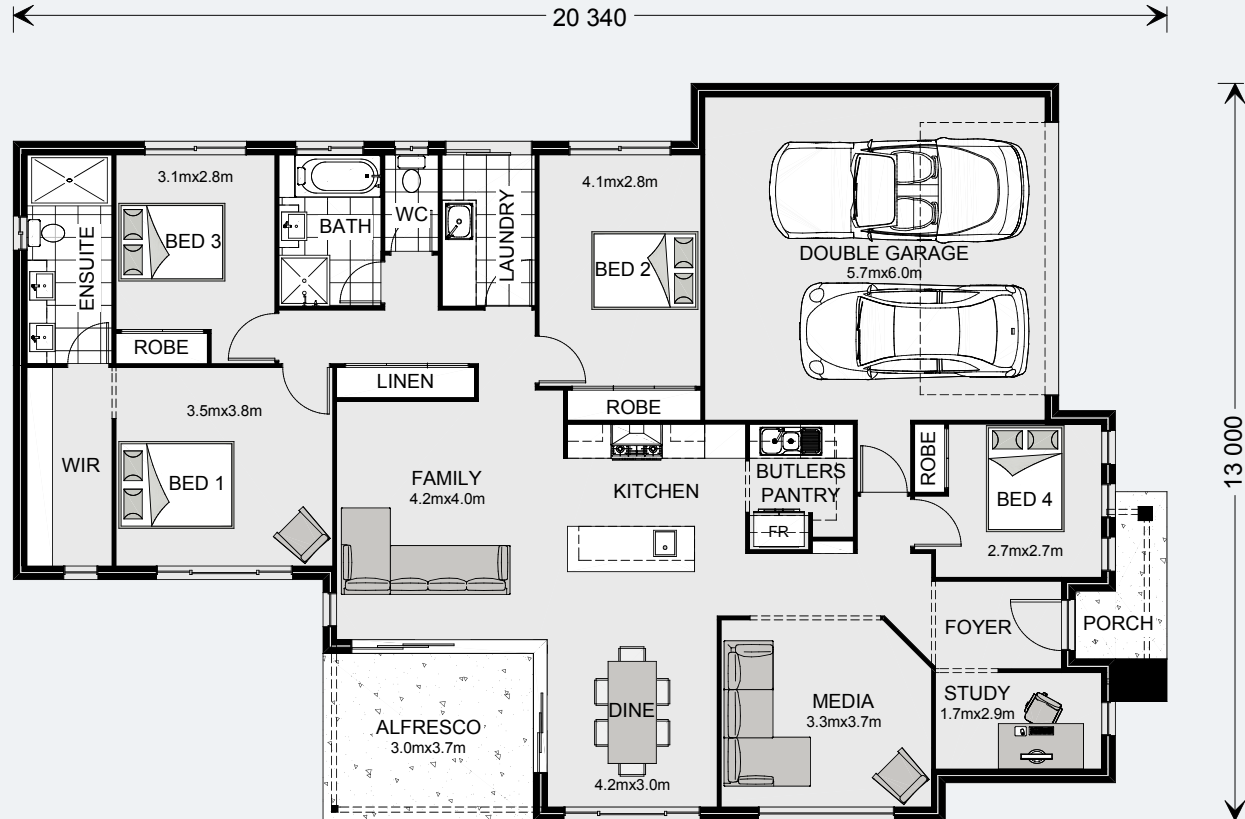
**Bedarra**

# Bedarra 213

4 | 2 | 2

## Floor Area

Living	159.2 m <sup>2</sup>
Garage	38.5 m <sup>2</sup>
Alfresco	10.9 m <sup>2</sup>
Porch	4.2 m <sup>2</sup>
<b>Total</b>	<b>212.8 m<sup>2</sup></b>



Images in this brochure may depict landscaping, fences and upgraded fixtures, features or finishes which are not included. For availability and pricing of these items please discuss with your new home consultant.

# Bedarra 233

4 | 2.5 | 2

## Floor Area

Living	178.0 m <sup>2</sup>
Garage	38.5 m <sup>2</sup>
Alfresco	12.6 m <sup>2</sup>
Porch	4.2 m <sup>2</sup>
<b>Total</b>	<b>233.3 m<sup>2</sup></b>



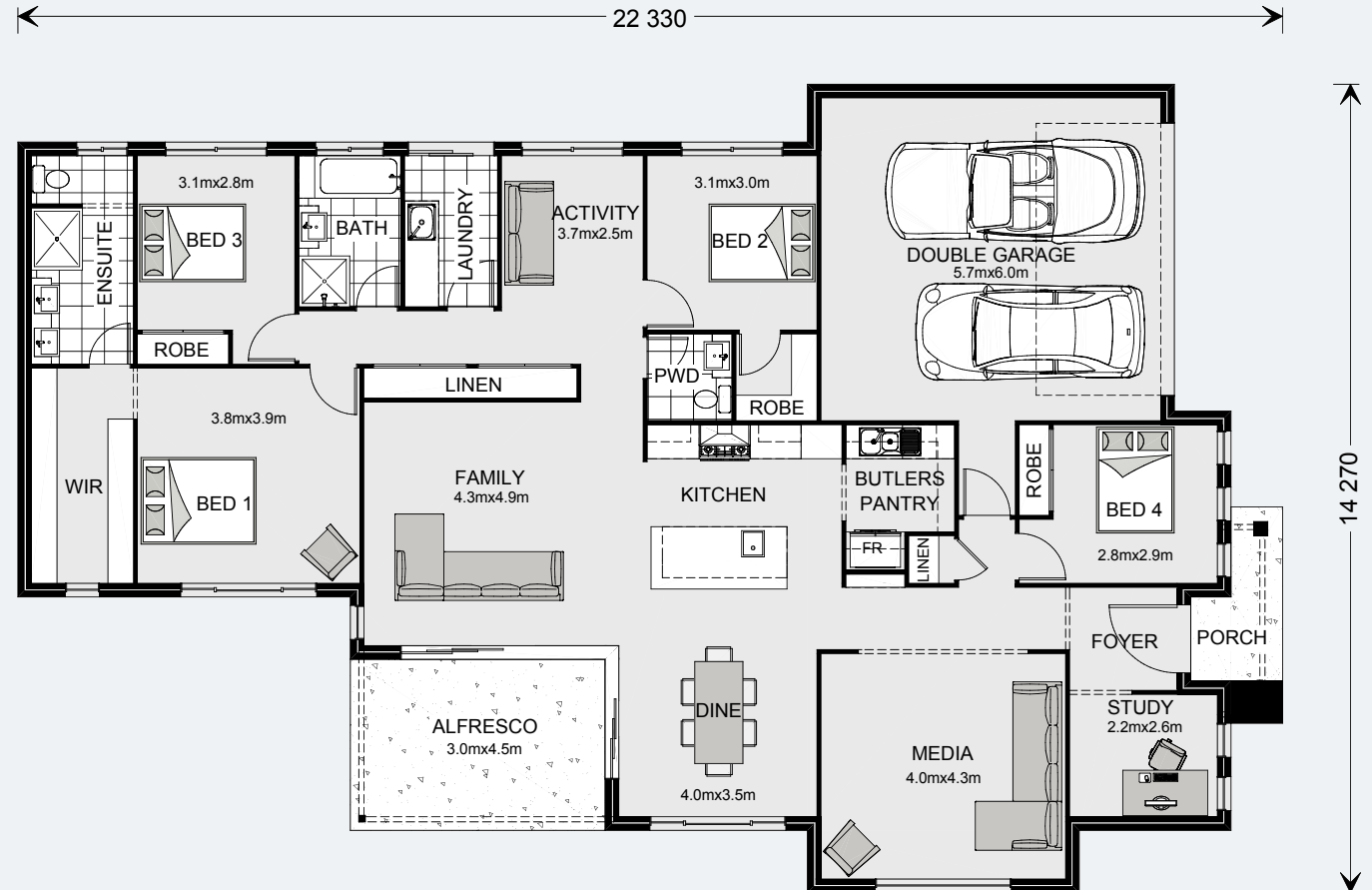
Images in this brochure may depict landscaping, fences and upgraded fixtures, features or finishes which are not included. For availability and pricing of these items please discuss with your new home consultant.

# Bedarra 247

4 | 2.5 | 2

## Floor Area

Living	189.6 m <sup>2</sup>
Garage	39.0 m <sup>2</sup>
Alfresco	13.6 m <sup>2</sup>
Porch	4.5 m <sup>2</sup>
<b>Total</b>	<b>246.7 m<sup>2</sup></b>



Images in this brochure may depict landscaping, fences and upgraded fixtures, features or finishes which are not included. For availability and pricing of these items please discuss with your new home consultant.

# Bedarra 280

4 | 2.5 | 2

## Floor Area

Living	224.3 m <sup>2</sup>
Garage	37.6 m <sup>2</sup>
Alfresco	13.4 m <sup>2</sup>
Porch	4.5 m <sup>2</sup>
<b>Total</b>	<b>279.8 m<sup>2</sup></b>



Images in this brochure may depict landscaping, fences and upgraded fixtures, features or finishes which are not included. For availability and pricing of these items please discuss with your new home consultant.

# Bedarra

The Bedarra design offers individually crafted facades that will inspire you by providing a choice of homes that reflect your personal lifestyle and preferences.

Featuring generous open-plan living spaces and good separation, G.J. Gardner Homes' Bedarra range has been designed for the modern family.

The design includes four bedrooms, activity room, a lounge and/or media room with adjacent study at the front of the home, and a spacious master bedroom with ensuite and walk-in robe to the rear.

At the heart of the home is a stylish kitchen with butler's pantry and breakfast bar, that overlooks the dining area and family room. Here, large stacker doors open on two sides for a seamless connection between internal and external living spaces.

Images in this brochure may depict landscaping, fences and upgraded fixtures, features or finishes which are not included. For availability and pricing of these items please discuss with your new home consultant.



# Bedarra

MASTER BEDROOM



Images in this brochure may depict landscaping, fences and upgraded fixtures, features or finishes which are not included. For availability and pricing of these items please discuss with your new home consultant.

# Bedarra

## BEDROOM



Images in this brochure may depict landscaping, fences and upgraded fixtures, features or finishes which are not included. For availability and pricing of these items please discuss with your new home consultant.



# Bedarra

BEDROOM



Images in this brochure may depict landscaping, fences and upgraded fixtures, features or finishes which are not included. For availability and pricing of these items please discuss with your new home consultant.

# Bedarra

BEDROOM



Images in this brochure may depict landscaping, fences and upgraded fixtures, features or finishes which are not included. For availability and pricing of these items please discuss with your new home consultant.

# Bedarra

## DINING



Images in this brochure may depict landscaping, fences and upgraded fixtures, features or finishes which are not included. For availability and pricing of these items please discuss with your new home consultant.

# Bedarra

## KITCHEN



Images in this brochure may depict landscaping, fences and upgraded fixtures, features or finishes which are not included. For availability and pricing of these items please discuss with your new home consultant.

# Bedarra

WALK-IN-ROBE



Images in this brochure may depict landscaping, fences and upgraded fixtures, features or finishes which are not included. For availability and pricing of these items please discuss with your new home consultant.

# Bedarra

URBAN



Images in this brochure may depict landscaping, fences and upgraded fixtures, features or finishes which are not included. For availability and pricing of these items please discuss with your new home consultant.

# Bedarra

EXECUTIVE



Images in this brochure may depict landscaping, fences and upgraded fixtures, features or finishes which are not included. For availability and pricing of these items please discuss with your new home consultant.

# Bedarra

BEACH



Images in this brochure may depict landscaping, fences and upgraded fixtures, features or finishes which are not included. For availability and pricing of these items please discuss with your new home consultant.



# Bedarra

CLASSIC



Images in this brochure may depict landscaping, fences and upgraded fixtures, features or finishes which are not included. For availability and pricing of these items please discuss with your new home consultant.

# Bedarra

TRADITIONAL



Images in this brochure may depict landscaping, fences and upgraded fixtures, features or finishes which are not included. For availability and pricing of these items please discuss with your new home consultant.

# Bedarra

RESORT



Images in this brochure may depict landscaping, fences and upgraded fixtures, features or finishes which are not included. For availability and pricing of these items please discuss with your new home consultant.