

# Regatta.



## **Allow yourself to imagine the lifestyle you've always wanted, in the home you deserve!**

The Regatta 264 boasts an elegant design, perfectly suited to sites that slope sideways. The large master bedroom is on the ground floor and features a stylish double ensuite, walk-in robe and study area, with good separation from four upstairs bedrooms.

Also on the ground floor are a separate lounge or media room and a large, open plan living zone that takes in the well-appointed kitchen with island bench, dining and family spaces and easy access to the alfresco area. The upper level provides the ideal kids' retreat including bedrooms, an activity room and a central bathroom.

Regatta Designs offer individually crafted facades that will inspire you by providing a choice of homes that reflect your personal lifestyle and preferences.

Welcome **home.**

**G.J. Gardner.** **HOMES**

## Regatta facade options.

G.J. Gardner's tailored facades give you the opportunity to personalise your home.

With Executive, Classic, Resort & Urban facades to choose from, you can bring your home to life, making it as individual as you are!



Images may depict fixtures, finishes and features not supplied by G.J. Gardner Homes. These items include planter boxes, retaining walls, water features, pergolas, screens and decorative landscaping items such as fencing and outdoor kitchens and barbecues.

## Regatta 264.

5  2.5  2 

### FEATURES

- + Large open-plan family room
- + Lifestyle alfresco area
- + Lounge / media room
- + Activity room

### SPECIFICATIONS

#### Floor Area-Ground

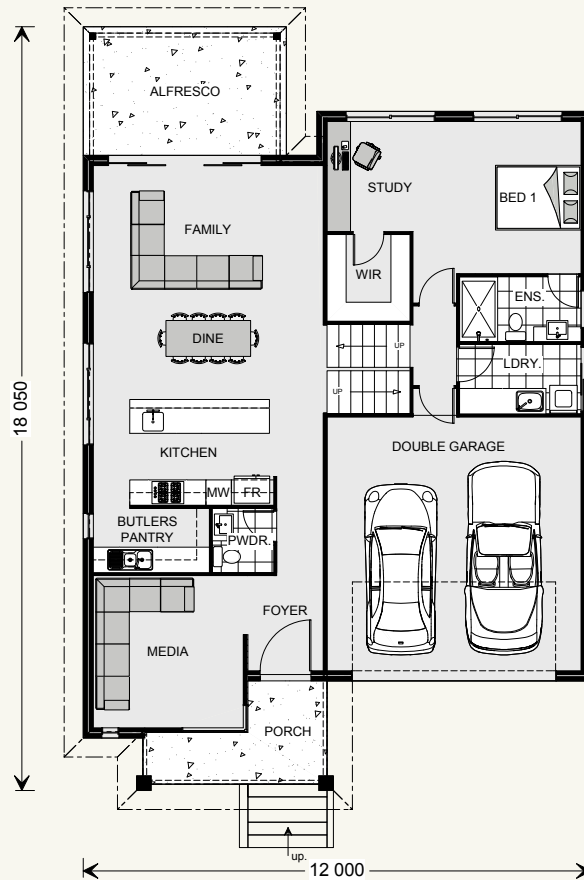
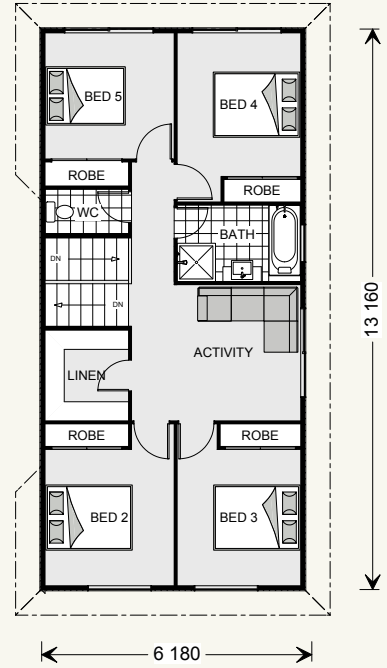
<b>Living:</b>	121.6 m <sup>2</sup>
<b>Garage:</b>	39.0 m <sup>2</sup>
<b>Alfresco:</b>	14.6 m <sup>2</sup>
<b>Porch:</b>	7.7 m <sup>2</sup>
<b>Total:</b>	182.9 m <sup>2</sup>
<b>Width:</b>	12.00 m
<b>Length:</b>	18.05 m

#### Floor Area-Upper

<b>Living:</b>	81.3 m <sup>2</sup>
<b>Total:</b>	81.3 m <sup>2</sup>

#### Total Area

<b>Total:</b>	264.2 m <sup>2</sup>
---------------	----------------------



### NOTES

---



---



---



---

---

**Locals always  
at hand.**

Designing and building your ideal home is an exciting experience, and when you partner with professional and established builders – G.J. Gardner Homes, the journey will be fulfilling and rewarding.



Internal photographs are from different G.J. Gardner Homes to those featured in this brochure.

Contact us on **132 789**  
or visit [gjpgardner.com.au](http://gjpgardner.com.au)

**G.J. Gardner.** HOMES