

G.J. Gardner.
HOMES



Kingscliff

Kingscliff 421

5 | 3.5 | 2

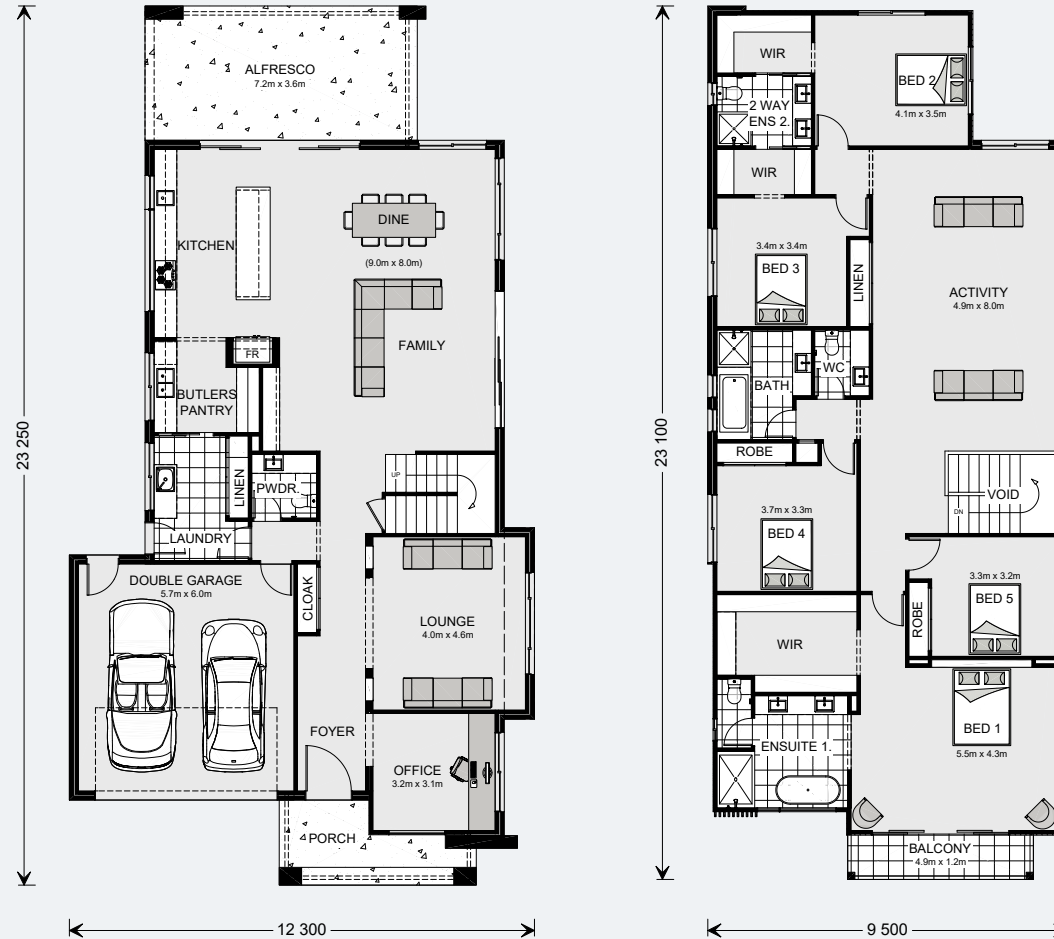
Gound Floor

Living	148.7 m ²
Garage	37.5 m ²
Alfresco	25.6 m ²
Porch	9.2 m ²
Total	221.0 m²

Upper Floor

Living	187.4 m ²
Void	6.4 m ²
Balcony	5.9 m ²
Total	199.7 m²
Grand Total	420.7 m²

421 Resort Floorplan



Images in this brochure may depict landscaping, fences and upgraded fixtures, features or finishes which are not included. For availability and pricing of these items please discuss with your new home consultant.

Kingscliff 354

4 | 2.5 | 2

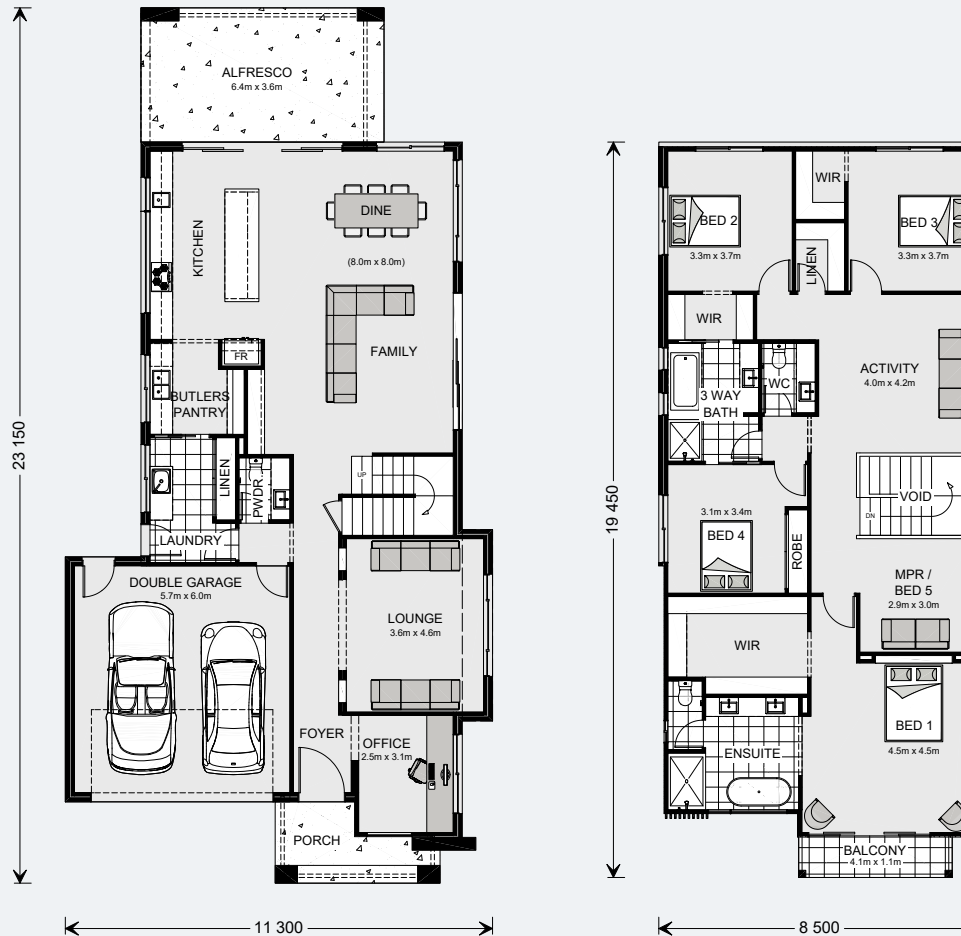
Gound Floor

Living	130.6 m ²
Garage	37.5 m ²
Alfresco	22.8 m ²
Porch	7.4 m ²
Total	198.3 m²

Upper Floor

Living	144.8 m ²
Void	6.8 m ²
Balcony	4.5 m ²
Total	156.1 m²
Grand Total	354.4 m²

354 Resort Floorplan



Images in this brochure may depict landscaping, fences and upgraded fixtures, features or finishes which are not included. For availability and pricing of these items please discuss with your new home consultant.

Kingscliff 324

4 | 2.5 | 2

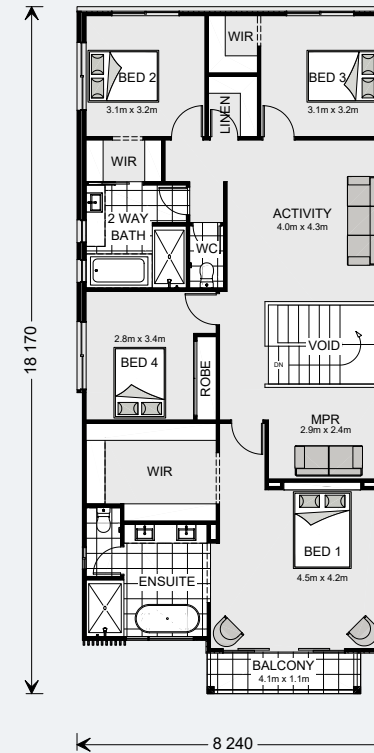
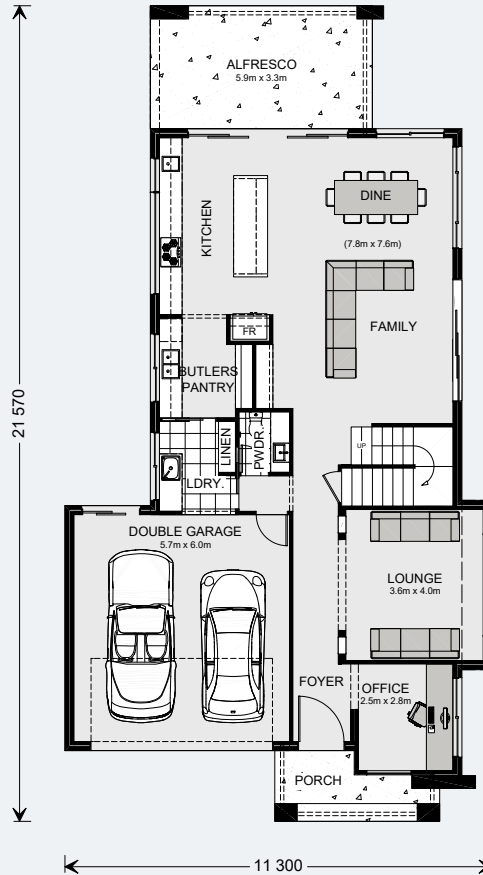
Ground Floor

Living	118.1 m ²
Garage	37.6 m ²
Alfresco	19.1 m ²
Porch	6.8 m ²
Total	181.6 m²

Upper Floor

Living	130.7 m ²
Void	6.8 m ²
Balcony	4.5 m ²
Total	142.0 m²
Grand Total	323.6 m²

324 Resort Floorplan



Images in this brochure may depict landscaping, fences and upgraded fixtures, features or finishes which are not included. For availability and pricing of these items please discuss with your new home consultant.

Kingscliff 285

4 | 2.5 | 2

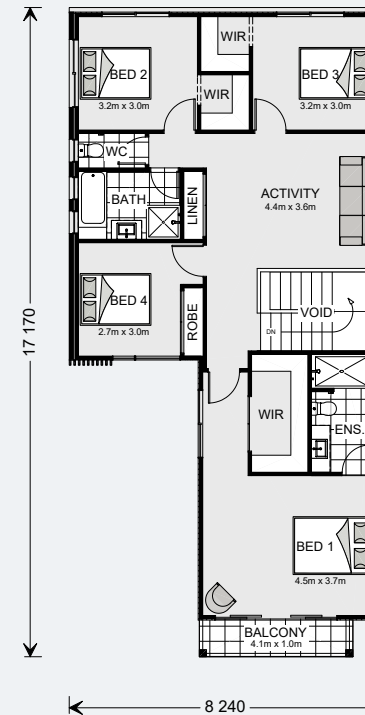
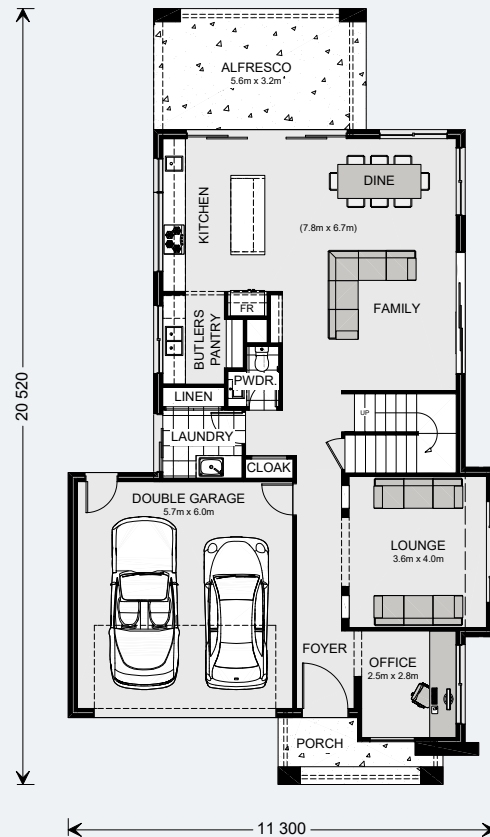
Ground Floor

Living	110.8 m ²
Garage	37.6 m ²
Alfresco	18.0 m ²
Porch	6.3 m ²
Total	172.7 m²

Upper Floor

Living	102.0 m ²
Void	6.5 m ²
Balcony	4.1 m ²
Total	112.6 m²
Grand Total	285.3 m²

285 Resort Floorplan



Images in this brochure may depict landscaping, fences and upgraded fixtures, features or finishes which are not included. For availability and pricing of these items please discuss with your new home consultant.

Kingscliff

The sensational Kingscliff is the ultimate family home that combines the very best of open plan living with distinct and separate entertaining areas. Elegant and efficient economy of spaces allows all members of the family a private space.

The open plan living zone on the ground floor is the heart of the home, comprising a designer kitchen, butler's pantry, family and dining areas and is seamlessly connected to the outdoor Alfresco area via the large sliding doors, to make entertaining a breeze.

A separate lounge and office provide additional spaces to relax and unwind.

Upstairs features 4 to 5 bedrooms, multiple bathrooms and an activity room suitable for a private family space or kids zone. The large master suite allows for its own sitting area and is complemented by a huge ensuite, walk-in robe and a private balcony.

Kingscliff Designs, exclusive to G.J. Gardner Homes, provides multiple, well thought out living spaces with a flowing floorplan creating a sense of space within the home.

Images in this brochure may depict landscaping, fences and upgraded fixtures, features or finishes which are not included. For availability and pricing of these items please discuss with your new home consultant.



Kingscliff

KITCHEN



Images in this brochure may depict landscaping, fences and upgraded fixtures, features or finishes which are not included. For availability and pricing of these items please discuss with your new home consultant.

Kingscliff

MASTER BEDROOM



Images in this brochure may depict landscaping, fences and upgraded fixtures, features or finishes which are not included. For availability and pricing of these items please discuss with your new home consultant.

Kingscliff

ENSUITE



Images in this brochure may depict landscaping, fences and upgraded fixtures, features or finishes which are not included. For availability and pricing of these items please discuss with your new home consultant.

Kingscliff

FAMILY



Images in this brochure may depict landscaping, fences and upgraded fixtures, features or finishes which are not included. For availability and pricing of these items please discuss with your new home consultant.

Kingscliff

LOUNGE



Images in this brochure may depict landscaping, fences and upgraded fixtures, features or finishes which are not included. For availability and pricing of these items please discuss with your new home consultant.

Kingscliff

ACTIVITY



Images in this brochure may depict landscaping, fences and upgraded fixtures, features or finishes which are not included. For availability and pricing of these items please discuss with your new home consultant.

Kingscliff

URBAN



Images in this brochure may depict landscaping, fences and upgraded fixtures, features or finishes which are not included. For availability and pricing of these items please discuss with your new home consultant.

Kingscliff

EXECUTIVE



Images in this brochure may depict landscaping, fences and upgraded fixtures, features or finishes which are not included. For availability and pricing of these items please discuss with your new home consultant.

Kingscliff

MANOR



Images in this brochure may depict landscaping, fences and upgraded fixtures, features or finishes which are not included. For availability and pricing of these items please discuss with your new home consultant.

Kingscliff

RESORT



Images in this brochure may depict landscaping, fences and upgraded fixtures, features or finishes which are not included. For availability and pricing of these items please discuss with your new home consultant.

Kingscliff

CLASSIC



Images in this brochure may depict landscaping, fences and upgraded fixtures, features or finishes which are not included. For availability and pricing of these items please discuss with your new home consultant.

Kingscliff

TRADITIONAL



Images in this brochure may depict landscaping, fences and upgraded fixtures, features or finishes which are not included. For availability and pricing of these items please discuss with your new home consultant.