

**G.J. Gardner.**  
**HOMES**



**Woodridge**

# Woodridge 232

4 | 2 | 2

## Floor Area

Living	179.1 m <sup>2</sup>
Garage	36.6 m <sup>2</sup>
Alfresco	13.4 m <sup>2</sup>
Porch	3.1 m <sup>2</sup>
<b>Total</b>	<b>232.2 m<sup>2</sup></b>



232 Classic Floorplan

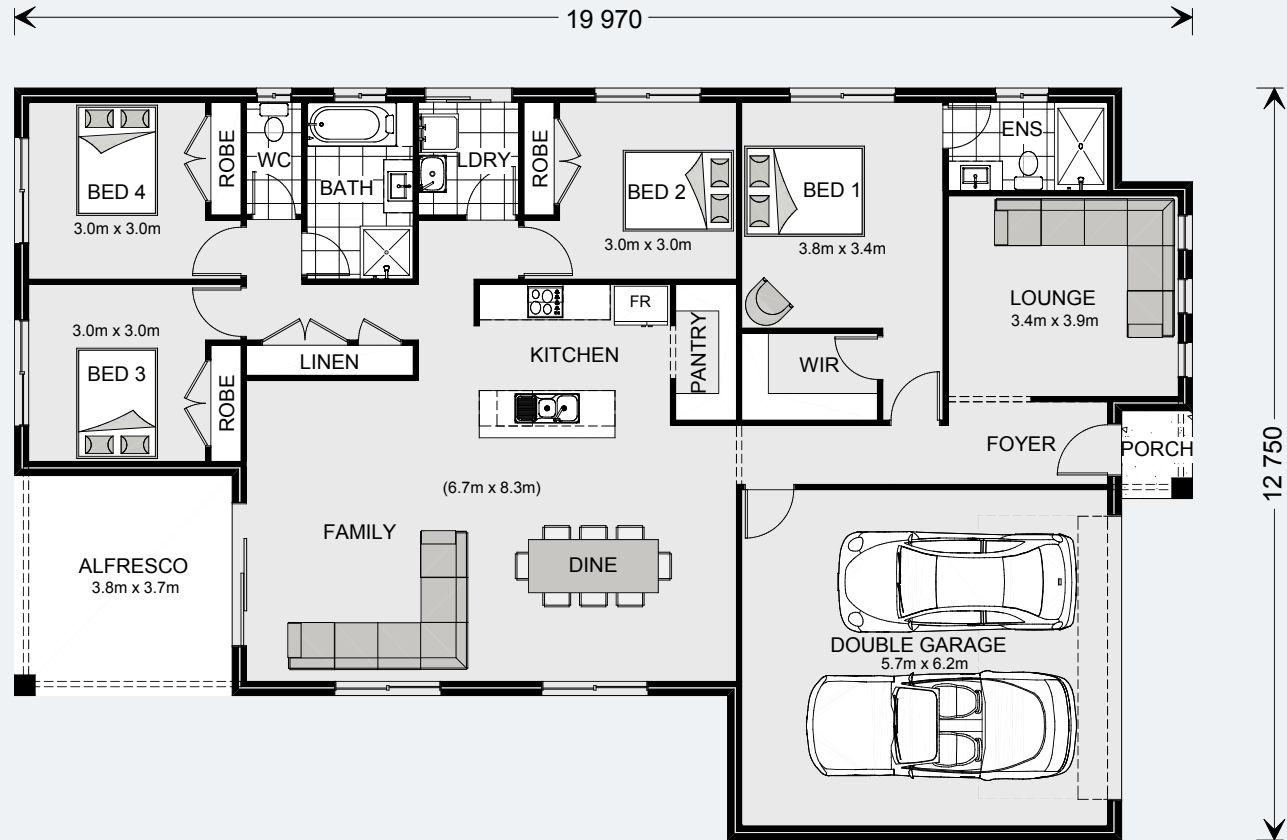
Images in this brochure may depict landscaping, fences and upgraded fixtures, features or finishes which are not included. For availability and pricing of these items please discuss with your new home consultant.

# Woodridge 216

4 | 2 | 2

## Floor Area

Living	161.6 m <sup>2</sup>
Garage	38.9 m <sup>2</sup>
Alfresco	13.8 m <sup>2</sup>
Porch	1.8 m <sup>2</sup>
<b>Total</b>	<b>216.1 m<sup>2</sup></b>



216 Classic Floorplan

Images in this brochure may depict landscaping, fences and upgraded fixtures, features or finishes which are not included. For availability and pricing of these items please discuss with your new home consultant.

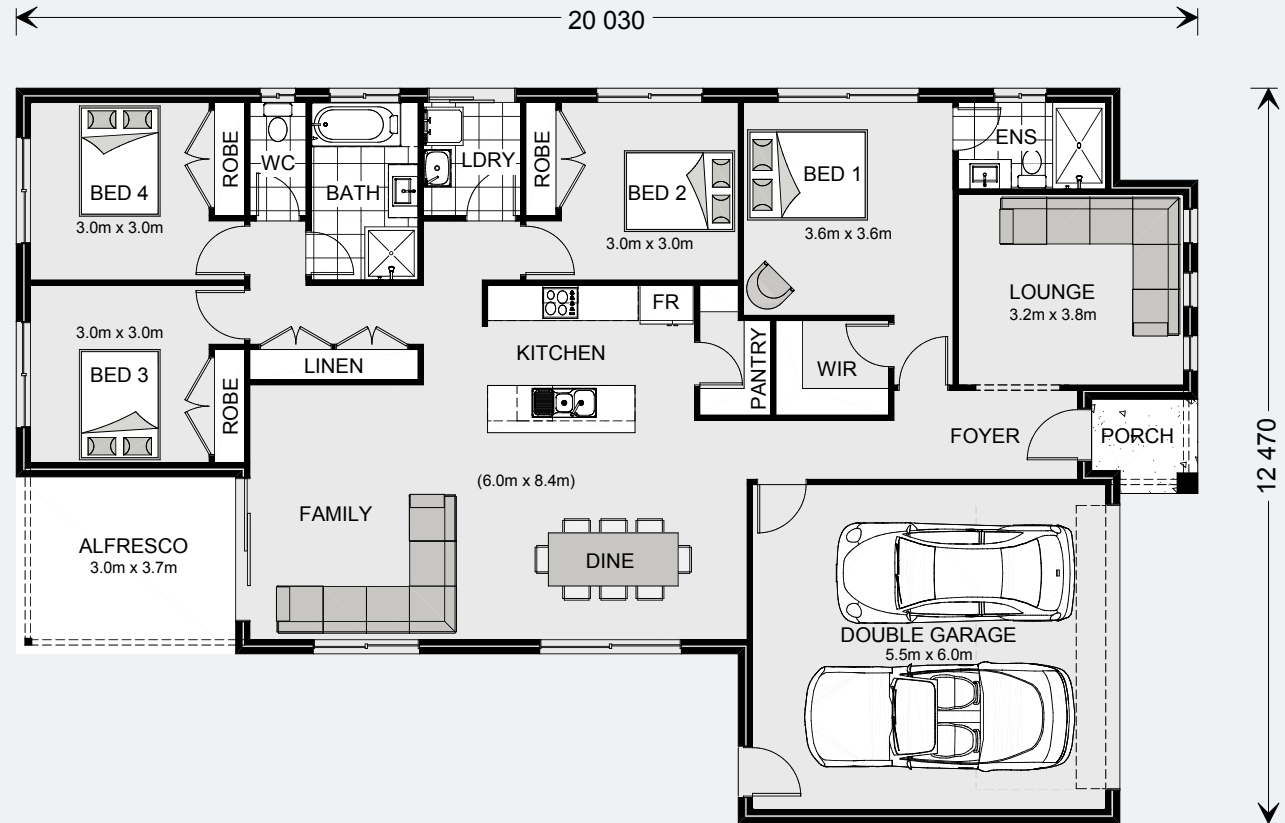
# Woodridge 205

4 | 2 | 2

## Floor Area

Living	154.6 m <sup>2</sup>
Garage	36.6 m <sup>2</sup>
Alfresco	11.2 m <sup>2</sup>
Portico	2.7 m <sup>2</sup>
<b>Total</b>	<b>205.1 m<sup>2</sup></b>

205 Classic Floorplan



Images in this brochure may depict landscaping, fences and upgraded fixtures, features or finishes which are not included. For availability and pricing of these items please discuss with your new home consultant.

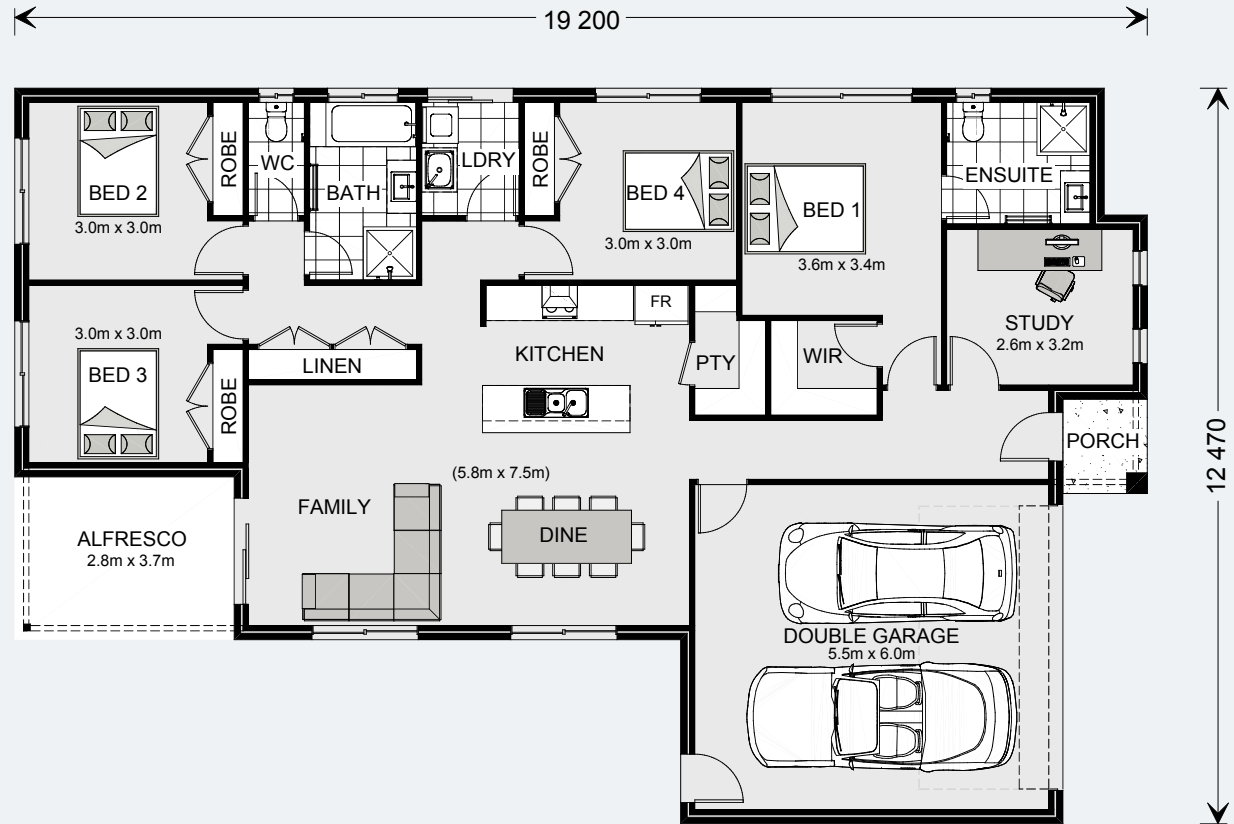
# Woodridge 195

4 | 2 | 2

## Floor Area

Living	145.4 m <sup>2</sup>
Garage	36.6 m <sup>2</sup>
Alfresco	10.3 m <sup>2</sup>
Porch	2.3 m <sup>2</sup>
<b>Total</b>	<b>194.6 m<sup>2</sup></b>

195 Classic Floorplan



Images in this brochure may depict landscaping, fences and upgraded fixtures, features or finishes which are not included. For availability and pricing of these items please discuss with your new home consultant.

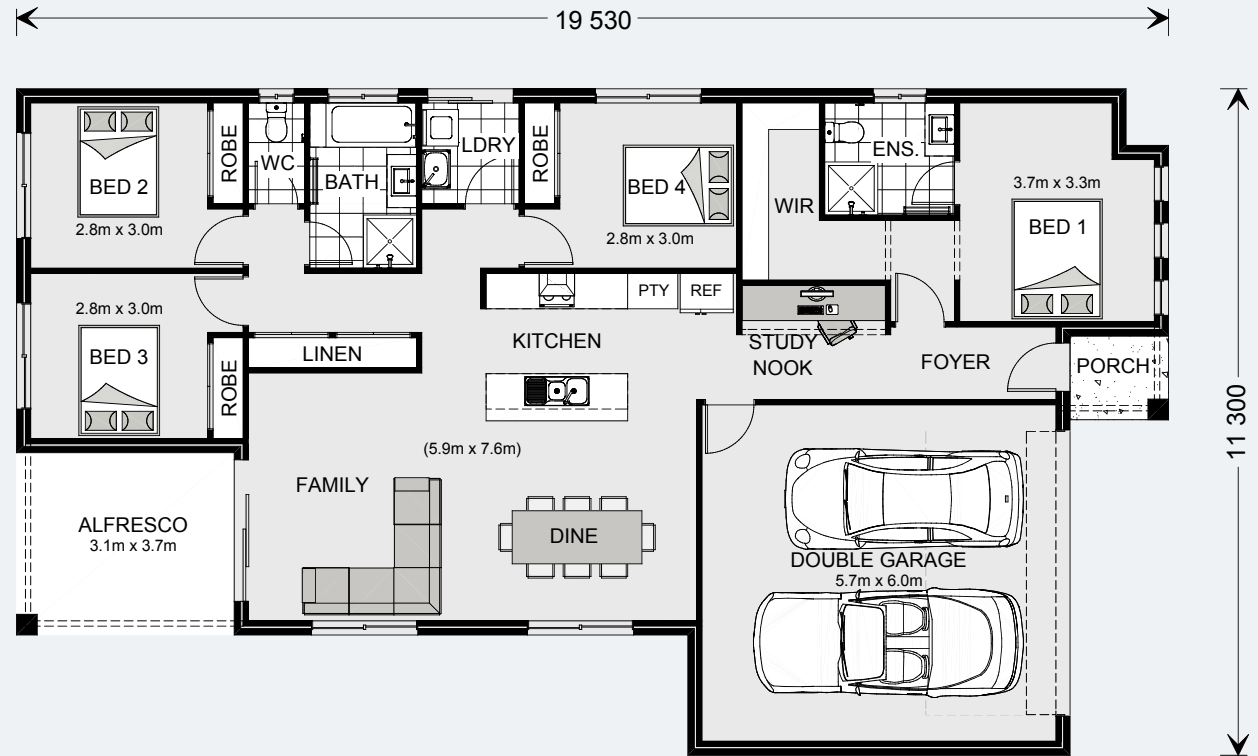
# Woodridge 187

4 | 2 | 2

## Floor Area

Living	135.9 m <sup>2</sup>
Garage	37.5 m <sup>2</sup>
Alfresco	11.4 m <sup>2</sup>
Porch	2.4 m <sup>2</sup>
<b>Total</b>	<b>187.2 m<sup>2</sup></b>

187 Classic Floorplan



Images in this brochure may depict landscaping, fences and upgraded fixtures, features or finishes which are not included. For availability and pricing of these items please discuss with your new home consultant.

## Woodridge

The Woodridge Express design offers individually crafted facades that will inspire you by providing a choice of homes that reflect your personal lifestyle and preferences.

A spacious, open-plan living area is at the heart of this functional family home. The alfresco, family and dining areas are conveniently positioned to ensure you will be entertaining all year round.

Prepare meals in the stylish central kitchen and entertain family and guests, watch a family movie or escape to the covered alfresco to relax and unwind.

Four spacious bedrooms are well separated to provide peace and privacy throughout. Towards the front of the home is the large master bedroom positioned for ultimate privacy behind a separate lounge, media or study at the front and includes a walk-in robe and stylish ensuite.

A huge private outdoor space behind the garage will bring your backyard to life.

Allow yourself to imagine the lifestyle you've always wanted; in the home you deserve!

Images in this brochure may depict landscaping, fences and upgraded fixtures, features or finishes which are not included. For availability and pricing of these items please discuss with your new home consultant.



# Woodridge

BEDROOM



Images in this brochure may depict landscaping, fences and upgraded fixtures, features or finishes which are not included. For availability and pricing of these items please discuss with your new home consultant.



# Woodridge

## KITCHEN



Images in this brochure may depict landscaping, fences and upgraded fixtures, features or finishes which are not included. For availability and pricing of these items please discuss with your new home consultant.

# Woodridge

BEACH



Images in this brochure may depict landscaping, fences and upgraded fixtures, features or finishes which are not included. For availability and pricing of these items please discuss with your new home consultant.

# Woodridge

CLASSIC



Images in this brochure may depict landscaping, fences and upgraded fixtures, features or finishes which are not included. For availability and pricing of these items please discuss with your new home consultant.

# Woodridge

EXECUTIVE



Images in this brochure may depict landscaping, fences and upgraded fixtures, features or finishes which are not included. For availability and pricing of these items please discuss with your new home consultant.

# Woodridge

HAMPTONS



Images in this brochure may depict landscaping, fences and upgraded fixtures, features or finishes which are not included. For availability and pricing of these items please discuss with your new home consultant.

# Woodridge

MANOR



Images in this brochure may depict landscaping, fences and upgraded fixtures, features or finishes which are not included. For availability and pricing of these items please discuss with your new home consultant.

# Woodridge

RESORT



Images in this brochure may depict landscaping, fences and upgraded fixtures, features or finishes which are not included. For availability and pricing of these items please discuss with your new home consultant.

# Woodridge

TRADITIONAL



Images in this brochure may depict landscaping, fences and upgraded fixtures, features or finishes which are not included. For availability and pricing of these items please discuss with your new home consultant.



# Woodridge

---

URBAN



Images in this brochure may depict landscaping, fences and upgraded fixtures, features or finishes which are not included. For availability and pricing of these items please discuss with your new home consultant.