

**G.J. Gardner.**  
HOMES



**Elwood**

# Elwood 303

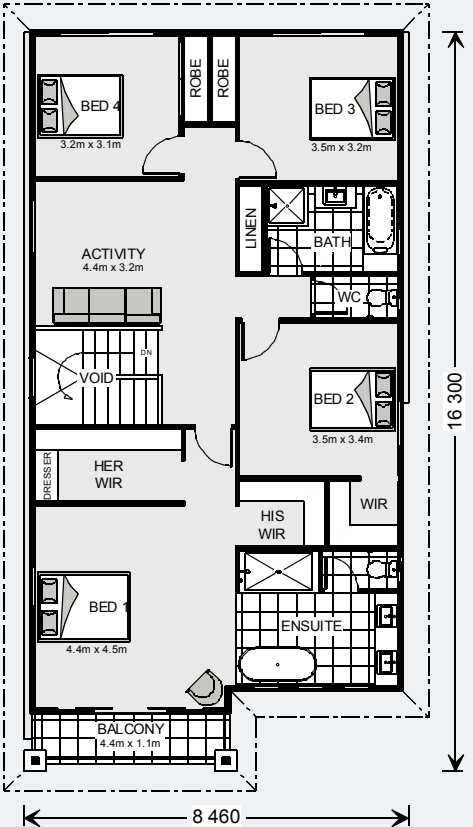
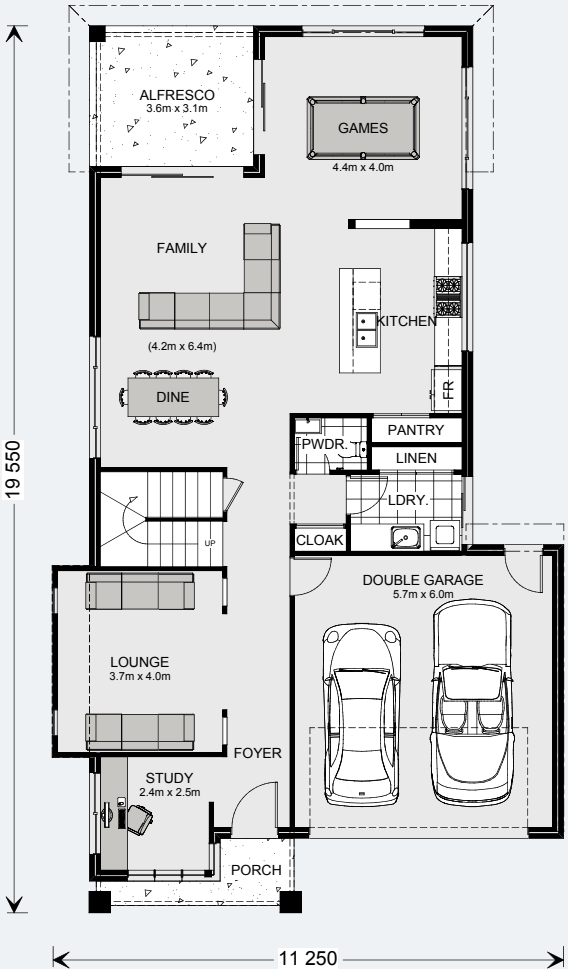
4 2.5 2

## Gound Floor

Living	121.5 m <sup>2</sup>
Garage	37.6 m <sup>2</sup>
Alfresco	11.2 m <sup>2</sup>
Portico	3.9 m <sup>2</sup>
<b>Total</b>	<b>174.2 m<sup>2</sup></b>

## Upper Floor

Living	117.9 m <sup>2</sup>
Balcony	5.0 m <sup>2</sup>
Void	6.0 m <sup>2</sup>
<b>Total</b>	<b>128.9 m<sup>2</sup></b>
<b>Grand Total</b>	<b>303.1 m<sup>2</sup></b>



Images in this brochure may depict landscaping, fences and upgraded fixtures, features or finishes which are not included. For availability and pricing of these items please discuss with your new home consultant.

# Elwood 344

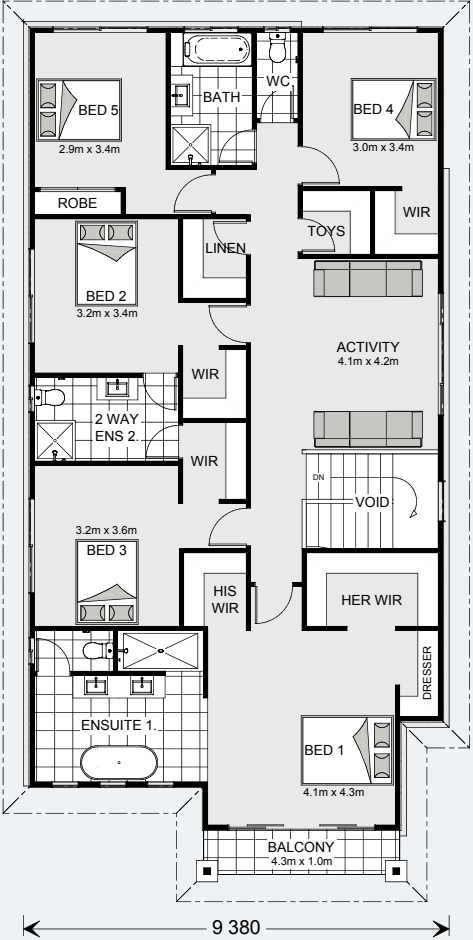
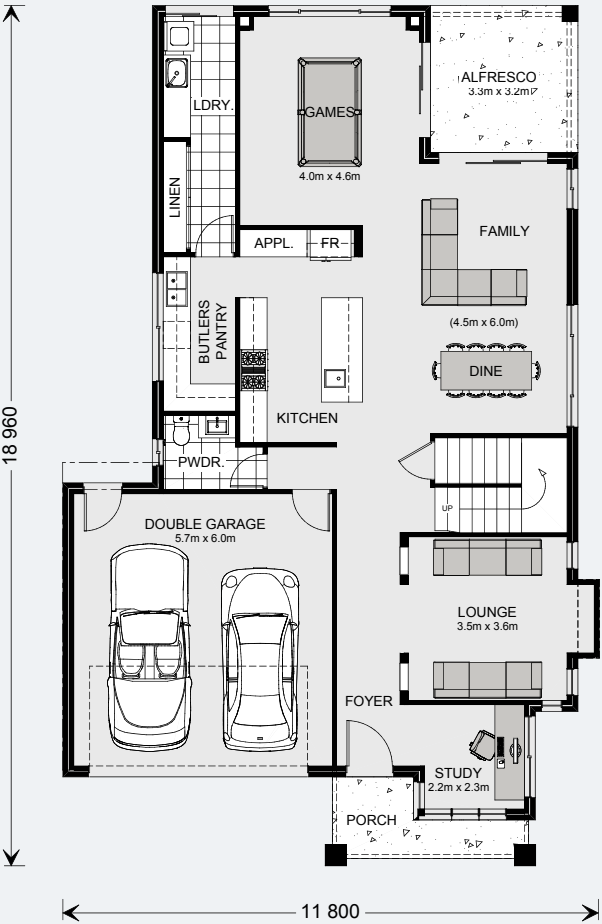
5 3.5 2

## Gound Floor

Living	126.2 m <sup>2</sup>
Garage	37.5 m <sup>2</sup>
Alfresco	10.5 m <sup>2</sup>
Portico	5.3 m <sup>2</sup>
<b>Total</b>	<b>179.5 m<sup>2</sup></b>

## Upper Floor

Living	153.8 m <sup>2</sup>
Balcony	4.3 m <sup>2</sup>
Void	6.4 m <sup>2</sup>
<b>Total</b>	<b>164.5 m<sup>2</sup></b>
<b>Grand Total</b>	<b>344.0 m<sup>2</sup></b>



Images in this brochure may depict landscaping, fences and upgraded fixtures, features or finishes which are not included. For availability and pricing of these items please discuss with your new home consultant.

# Elwood 353

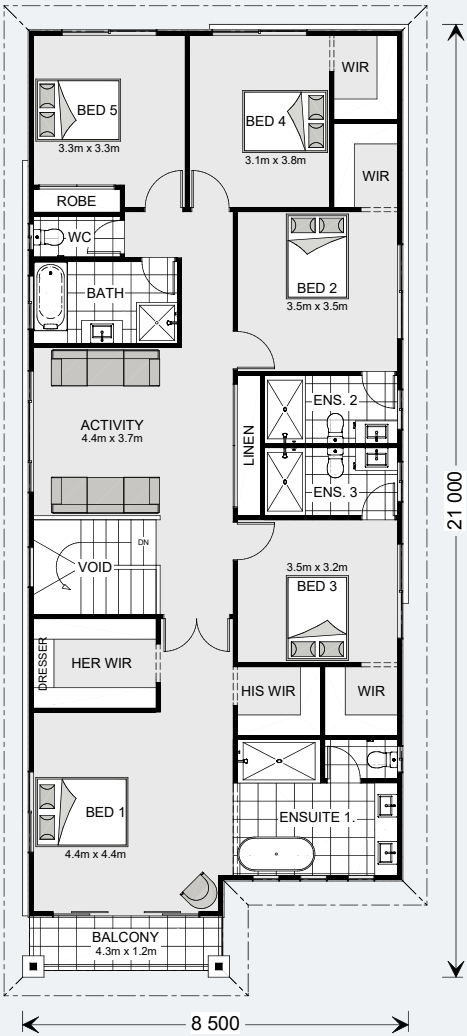
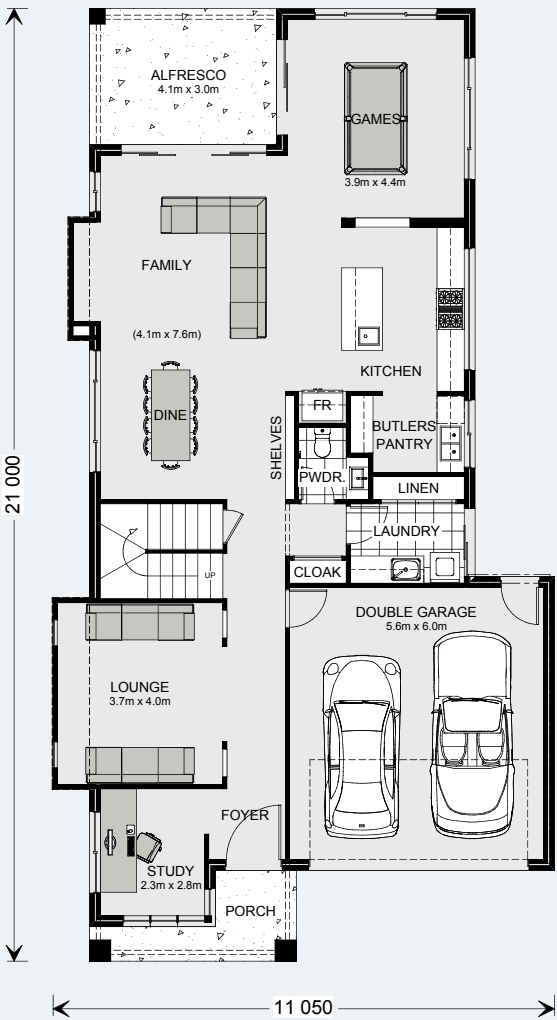
5 4.5 2

## Gound Floor

Living	131.5 m <sup>2</sup>
Garage	36.9 m <sup>2</sup>
Alfresco	12.4 m <sup>2</sup>
Portico	5.7 m <sup>2</sup>
<b>Total</b>	<b>186.5 m<sup>2</sup></b>

## Upper Floor

Living	155.8 m <sup>2</sup>
Balcony	5.1 m <sup>2</sup>
Void	6.0 m <sup>2</sup>
<b>Total</b>	<b>166.9 m<sup>2</sup></b>
<b>Grand Total</b>	<b>353.4 m<sup>2</sup></b>



Images in this brochure may depict landscaping, fences and upgraded fixtures, features or finishes which are not included. For availability and pricing of these items please discuss with your new home consultant.

# Elwood 406

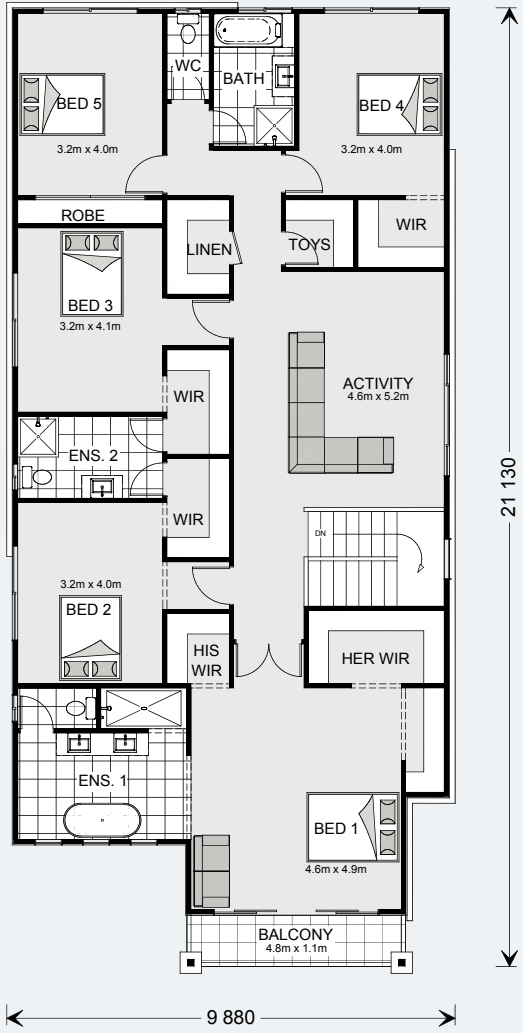
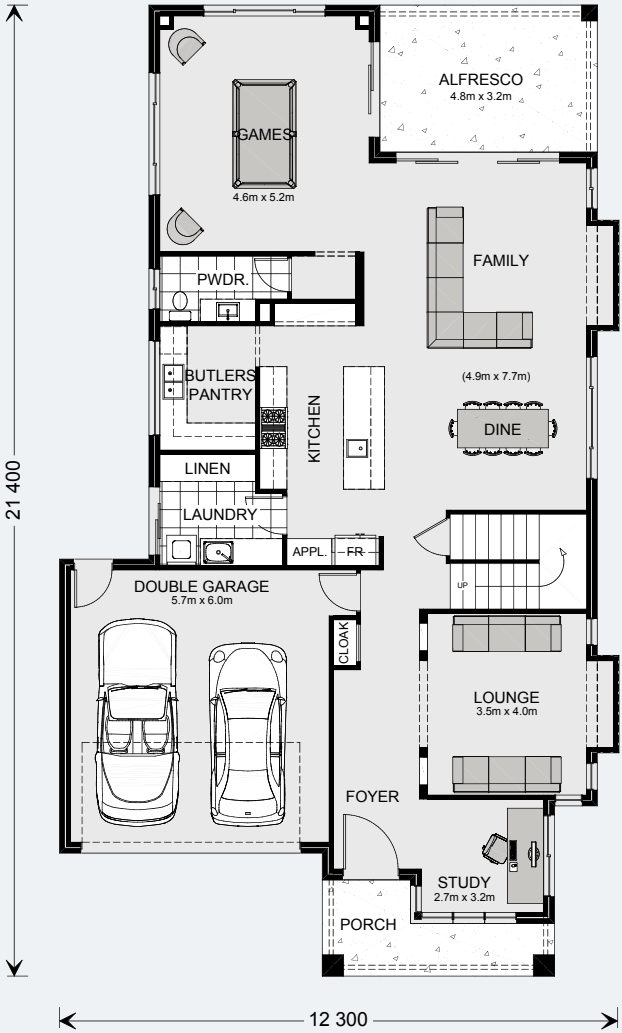
5 3.5 2

## Gound Floor

Living	150.8m <sup>2</sup>
Garage	38.2 m <sup>2</sup>
Alfresco	15.5 m <sup>2</sup>
Portico	7.8 m <sup>2</sup>
<b>Total</b>	<b>212.3 m<sup>2</sup></b>

## Upper Floor

Living	188.1 m <sup>2</sup>
Void	5.4 m <sup>2</sup>
<b>Total</b>	<b>193.5 m<sup>2</sup></b>
<b>Grand Total</b>	<b>405.8 m<sup>2</sup></b>



Images in this brochure may depict landscaping, fences and upgraded fixtures, features or finishes which are not included. For availability and pricing of these items please discuss with your new home consultant.



# Elwood

The cleverly designed Elwood is a stunning example of form and function, providing elegant separation of spaces for entertaining and privacy for all.

The family is the heart of the home and the Elwood design range reflects this, making the family room the central hub in this exclusive range from G.J. Gardner Homes.

With direct access to the huge kitchen and butler's pantry from the family room & games room, stacker sliding doors on both sides provide a seamless connection to the outdoor spaces, perfectly designed for relaxation and entertainment.

Upstairs is the private family zone, consisting of up to five large bedrooms with a central activity room and bathroom, illustrating another aspect of this home's intelligent planning. The master bedroom has a sense of luxury with his and her wardrobes and a large ensuite and private Balcony.

Images in this brochure may depict landscaping, fences and upgraded fixtures, features or finishes which are not included. For availability and pricing of these items please discuss with your new home consultant.





# Elwood

## MASTER BEDROOM



Images in this brochure may depict landscaping, fences and upgraded fixtures, features or finishes which are not included. For availability and pricing of these items please discuss with your new home consultant.



# Elwood

## KITCHEN

Images in this brochure may depict landscaping, fences and upgraded fixtures, features or finishes which are not included. For availability and pricing of these items please discuss with your new home consultant.





# Elwood

## ENSUITE

Images in this brochure may depict landscaping, fences and upgraded fixtures, features or finishes which are not included. For availability and pricing of these items please discuss with your new home consultant.





# Elwood

URBAN

Images in this brochure may depict landscaping, fences and upgraded fixtures, features or finishes which are not included. For availability and pricing of these items please discuss with your new home consultant.





# Elwood

## MANOR

Images in this brochure may depict landscaping, fences and upgraded fixtures, features or finishes which are not included. For availability and pricing of these items please discuss with your new home consultant.





# Elwood

METRO

Images in this brochure may depict landscaping, fences and upgraded fixtures, features or finishes which are not included. For availability and pricing of these items please discuss with your new home consultant.





# Elwood

CLASSIC

Images in this brochure may depict landscaping, fences and upgraded fixtures, features or finishes which are not included. For availability and pricing of these items please discuss with your new home consultant.





# Elwood

HAMPTONS

Images in this brochure may depict landscaping, fences and upgraded fixtures, features or finishes which are not included. For availability and pricing of these items please discuss with your new home consultant.





# Elwood

## RESORT

Images in this brochure may depict landscaping, fences and upgraded fixtures, features or finishes which are not included. For availability and pricing of these items please discuss with your new home consultant.

