

G.J. Gardner.
HOMES



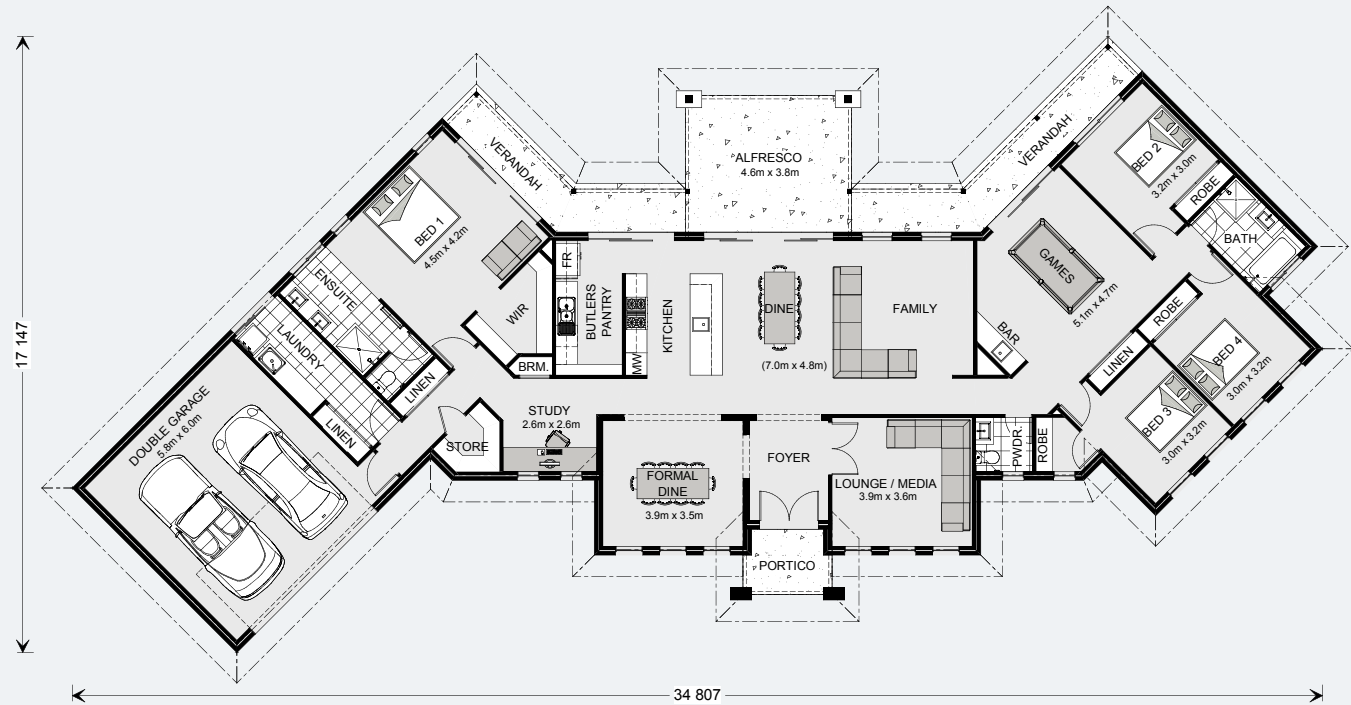
Montville

Montville 325

 4 |
  2.5 |
  2

Floor Area

Living	240.6 m ²
Garage	39.9 m ²
Alfresco	17.6 m ²
Portico	4.2 m ²
Verandah(s)	22.9 m ²
Total	325.2 m²



325 Resort Floorplan

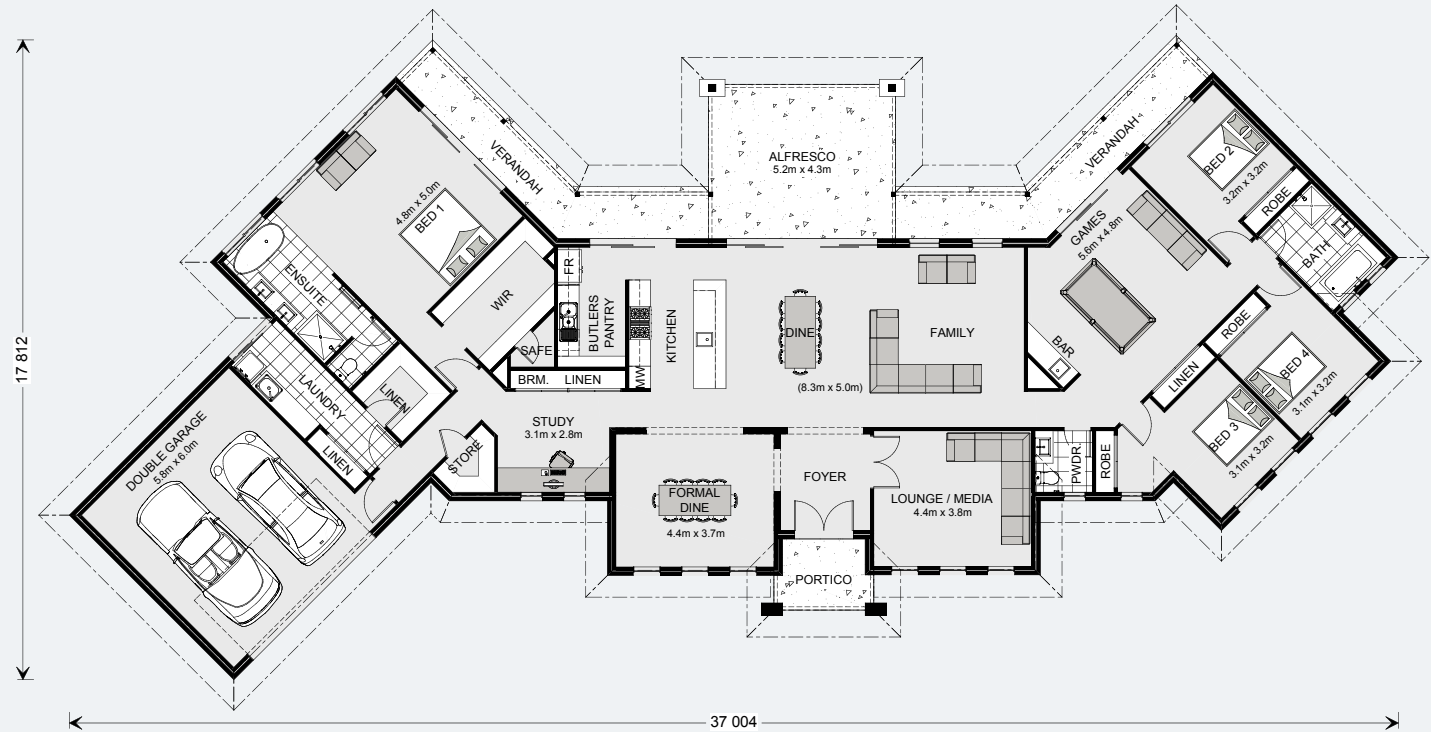
Images in this brochure may depict landscaping, fences and upgraded fixtures, features or finishes which are not included. For availability and pricing of these items please discuss with your new home consultant.

Montville 380

 4
  2.5
  2

Floor Area

Living	283.5 m ²
Garage	39.9 m ²
Alfresco	22.4 m ²
Portico	5.0 m ²
Verandah(s)	29.2 m ²
Total	380.0 m²



380 Resort Floorplan

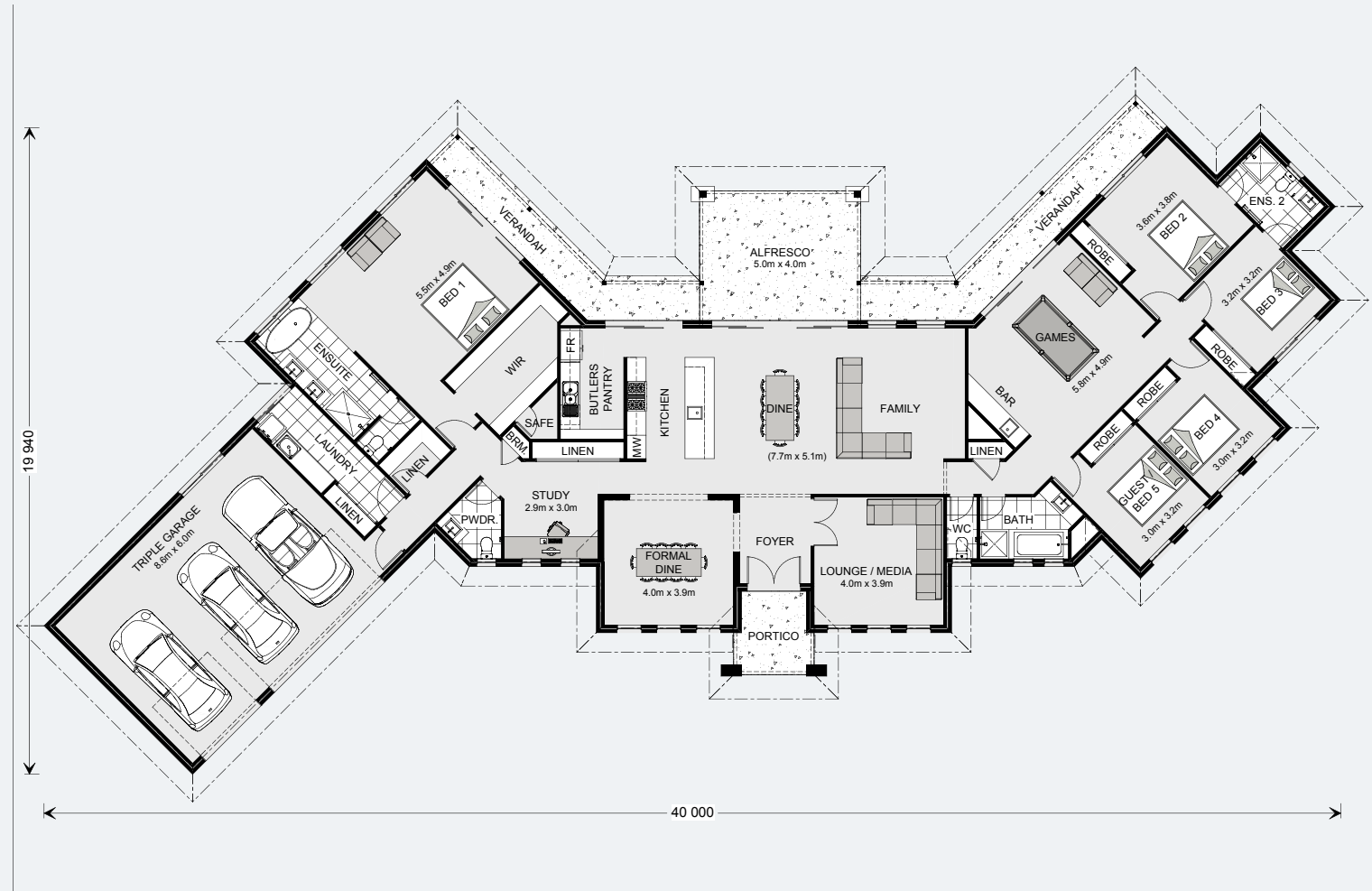
Images in this brochure may depict landscaping, fences and upgraded fixtures, features or finishes which are not included. For availability and pricing of these items please discuss with your new home consultant.

Montville 420

5 | 3.5 | 3

Floor Area

Living	306.7 m ²
Garage	58.1 m ²
Alfresco	19.9 m ²
Portico	5.8 m ²
Verandah(s)	29.2 m ²
Total	419.7 m²



Images in this brochure may depict landscaping, fences and upgraded fixtures, features or finishes which are not included. For availability and pricing of these items please discuss with your new home consultant.

Montville

The Montville Prestige design offers individually crafted facades that will inspire you by providing a choice of homes that reflect your personal lifestyle and preferences.

The Montville Prestige offers a fresh modern take on the classic country lifestyle. A sweeping floorplan with wraparound verandahs to the rear creates an airy, expansive feel, while clever design provides space and privacy for each family member.

Front and centre, the large entry foyer features a formal lounge and formal dining on either side, before revealing a huge open plan living space with designer kitchen, butler's pantry, dining and family room at the heart of the home. A large covered Alfresco and sweeping verandahs to the rear extend the living spaces outdoors through large sliding doors. Entertaining and relaxing with family and friends is effortless with a diverse selection of spaces to suit any occasion.

Separated by the central main living zone, two distinct zones are formed either side. To one side is an impressive master retreat with huge walk-in robe and luxury ensuite, while the other wing is perfect as a kid's or guest zone with 3 to 4 bedrooms, bathrooms and a games room with built-in bar.

Perfect for the widest of blocks the Montville is the ultimate lifestyle home.

Images in this brochure may depict landscaping, fences and upgraded fixtures, features or finishes which are not included. For availability and pricing of these items please discuss with your new home consultant.



Montville

MASTER BEDROOM



Images in this brochure may depict landscaping, fences and upgraded fixtures, features or finishes which are not included. For availability and pricing of these items please discuss with your new home consultant.

Montville

KITCHEN



Images in this brochure may depict landscaping, fences and upgraded fixtures, features or finishes which are not included. For availability and pricing of these items please discuss with your new home consultant.

Montville

DINING



Images in this brochure may depict landscaping, fences and upgraded fixtures, features or finishes which are not included. For availability and pricing of these items please discuss with your new home consultant.

Montville

URBAN



Images in this brochure may depict landscaping, fences and upgraded fixtures, features or finishes which are not included. For availability and pricing of these items please discuss with your new home consultant.

Montville

EXECUTIVE



Images in this brochure may depict landscaping, fences and upgraded fixtures, features or finishes which are not included. For availability and pricing of these items please discuss with your new home consultant.

Montville

MANOR



Images in this brochure may depict landscaping, fences and upgraded fixtures, features or finishes which are not included. For availability and pricing of these items please discuss with your new home consultant.

Montville

RESORT



Images in this brochure may depict landscaping, fences and upgraded fixtures, features or finishes which are not included. For availability and pricing of these items please discuss with your new home consultant.