

The Oakdale.



Your trusted local builder.
Call 132 789 or visit gjgardner.com.au



Locally Owned



Australia's Best National Home Builder on Product Review



Fixed Price Contracts



Facts Up Front

CLASSIC



EXECUTIVE



HAMPTONS



Whether you have a large or extended family or just regular guests the Oakdale design range, exclusive to G.J. Gardner Homes will continue to impress the whole family time and time again.

Coming home to the Oakdale design will never get dull, from it's grand wide facade through to it's spacious layout, it's an impressive design that is well-thought out for the modern family. Through the foyer a formal lounge flows effortlessly onto an open plan dining and family room. Entertaining day and night will be a breeze with all the extras you can think of including a rumpus room, galley kitchen complete with large butlers pantry and an enormous alfresco area off the family zone.



Key Features:

- + Always have a space to enjoy, entertain, come together and relax in with 5 large indoor and outdoor living zones.
- + Allow your inspiration for gourmet meals to flow in the central, spacious kitchen complete with huge butlers pantry.
- + The kids will enjoy their own zone complete with 3 bedrooms, an activity room, bathroom and study nook.
- + Retreat to your master bedroom with double ensuite and spacious WIR, it's a holiday haven in its own right.

Oakdale 232.



Suits standard lot width: 24.5m +

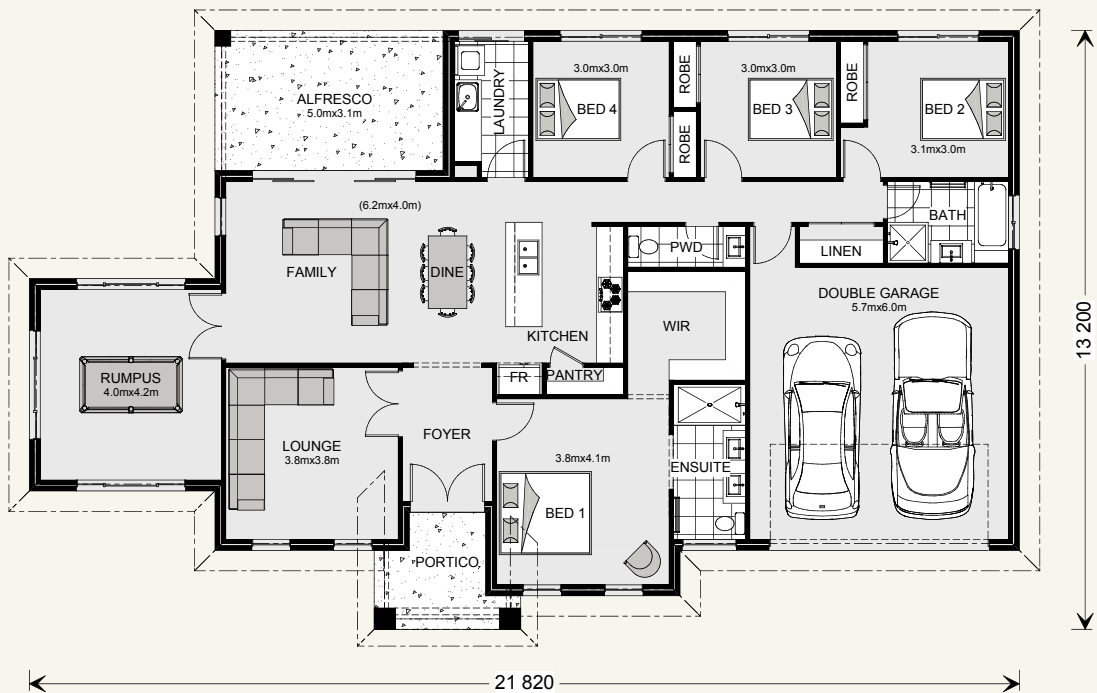
Floor sizes - Resort Façade

Living: 172.6 m²
Garage: 37.1 m²

Alfresco: 15.5 m²

Portico: 6.3 m²

Total: 231.5 m²



Oakdale 272.



Suits standard lot width: 27m +

Floor sizes - Resort Façade

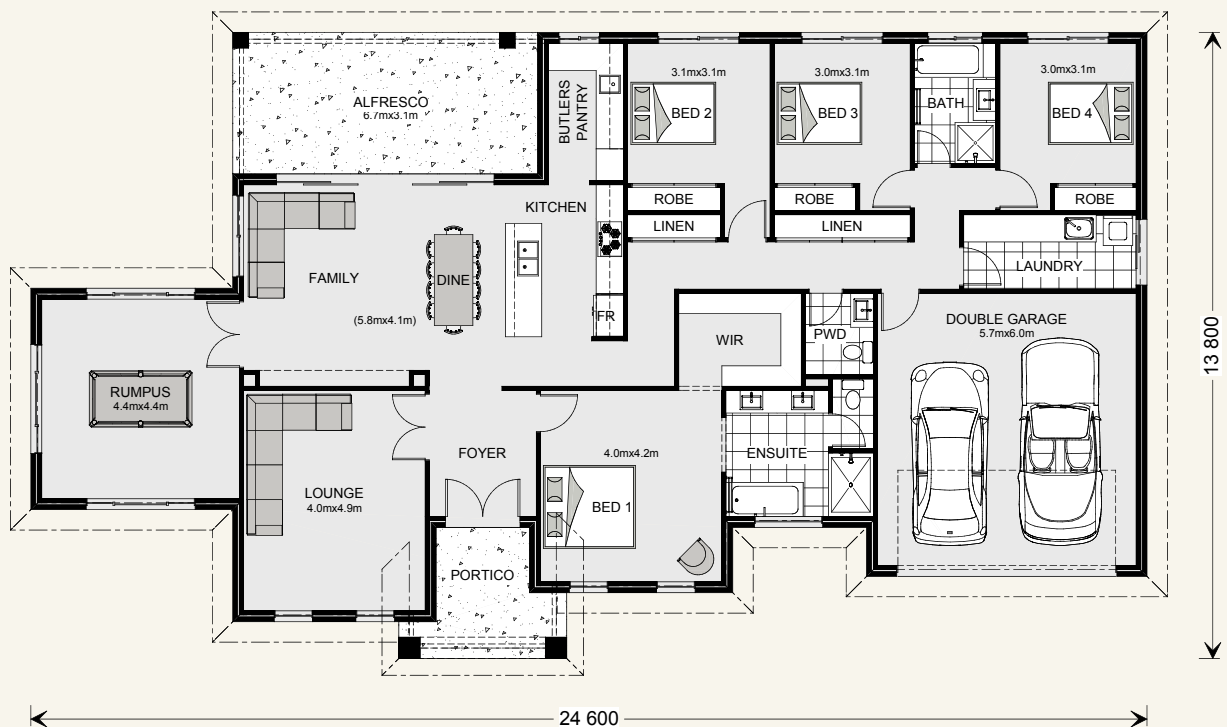
Living: 205.7 m²

Garage: 37.3 m²

Alfresco: 21.0 m²

Portico: 7.8 m²

Total: 271.8 m²



Oakdale 320.



Suits standard lot width: 29m +

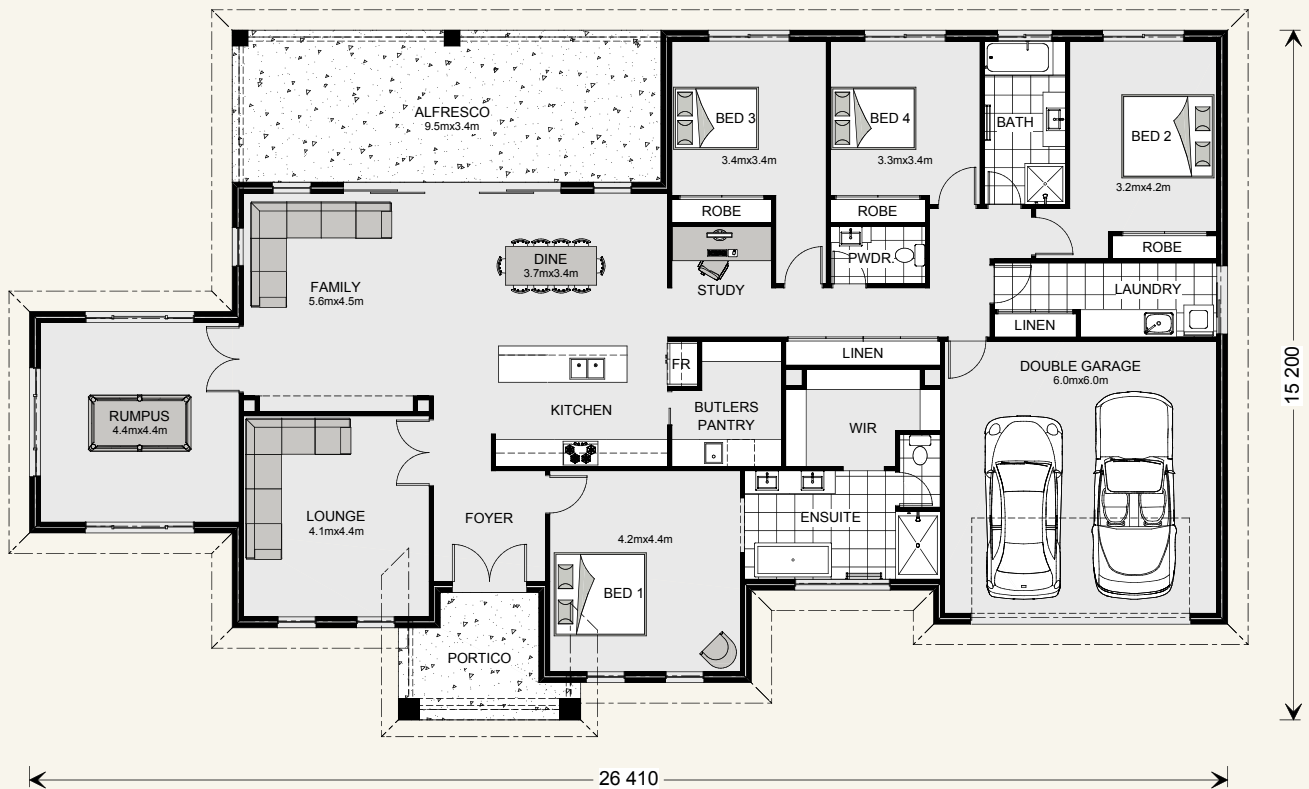
Floor sizes - Resort Façade

Living: 240.1 m²
Garage: 39.1 m²

Alfresco: 31.7 m²

Portico: 8.7 m²

Total: 319.6 m²



Oakdale 355.



Suits standard lot width: 30m +

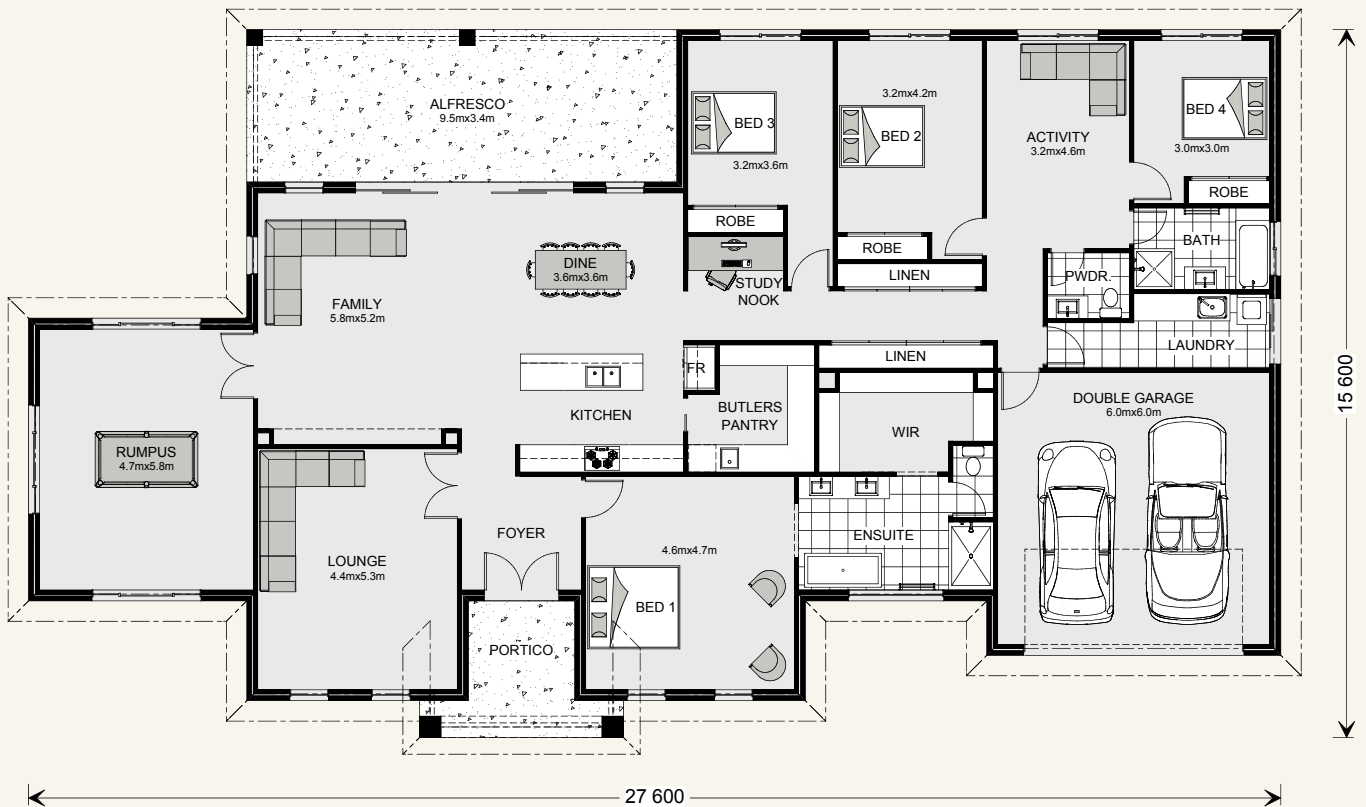
Floor sizes - Resort Façade

Living: 275.5 m²
Garage: 39.2 m²

Alfresco: 31.9 m²

Portico: 8.8 m²

Total: 355.4 m²



Get in touch with an award-winning local builder today!

 132 789

 gjgardner.com.au



— WINNER —

**Australia's Best
National Home Builder
2016 and 2017**

PRODUCT  REVIEW
.COM.AU



*Based upon Australia Major Builder reviews received on productreview.com.au from 1 January 2016 – 30 November 2017. Images may depict fixtures, finishes and features not supplied by G.J. Gardner Homes. These items include planter boxes, retaining walls, water features, pergolas, screens and decorative landscaping items such as fencing and outdoor kitchens and barbecues.

Get in touch today!

Call 132 789 or visit gjgardner.com.au

G.J. Gardner. HOMES