



Esplanade 382

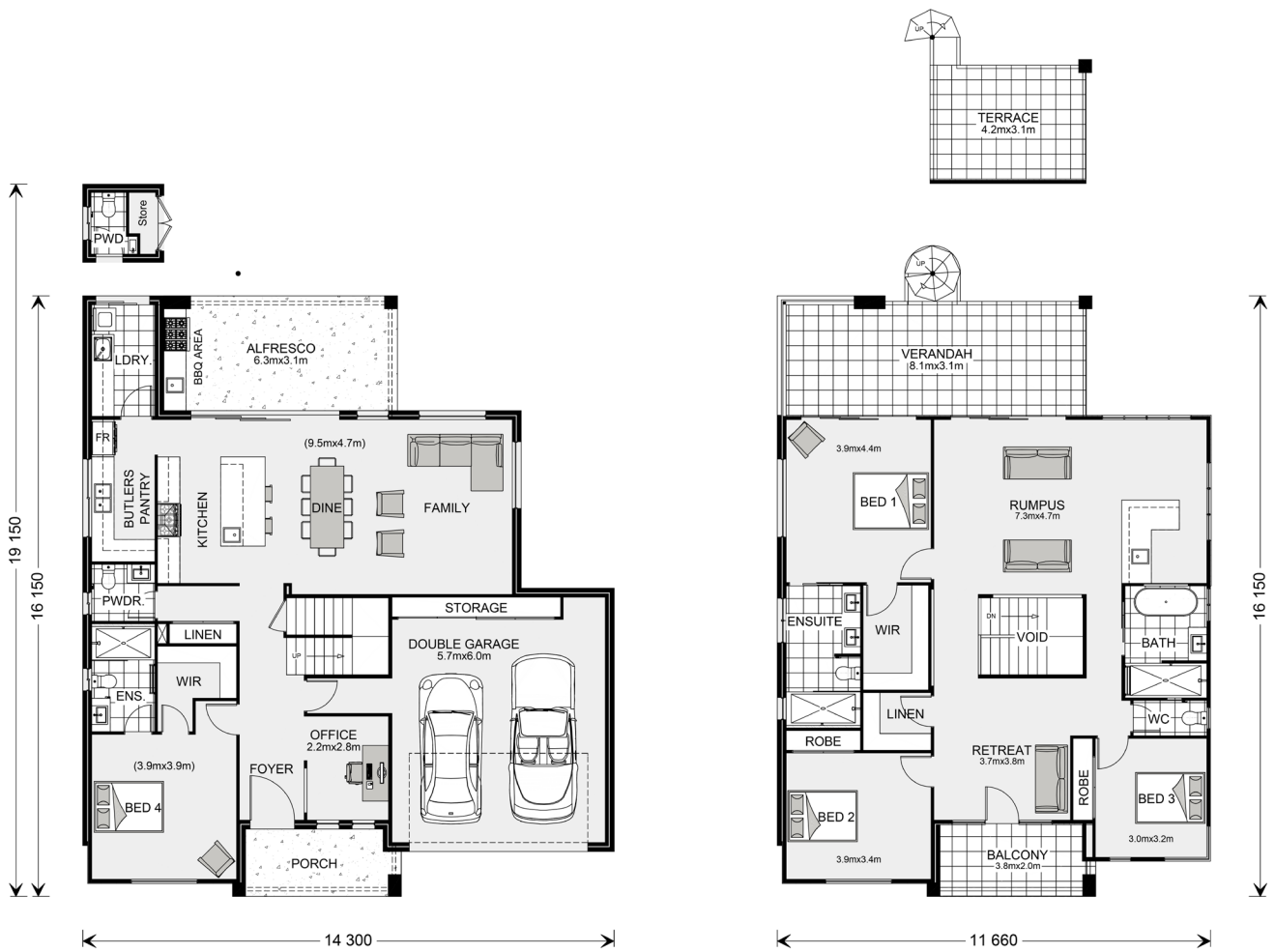
44 Hillyard Street, Pialba

🛏️ 4 | 🚿 3.5 | 🚗 2

The Esplanade is the perfect home for large or growing families offering an abundance of space over two functional stories.

A generous entertaining kitchen, with butler's pantry overlooks the large, open plan living space and alfresco. Well-spaced bedrooms and individual lounges offer privacy for the whole family. The master bedroom, opening onto the balcony, boasts a luxurious ensuite and walk-in robe.

Enjoy relaxing by the pool area or take in the view from the rooftop terrace. With the ultimate spaces for multi-level entertaining, this beautiful home will be the envy of the street.



Images depict Esplanade 382 Urban facade. 382 Urban floorplan.

Esplanade 382

4 | 3.5 | 2

Ground Floor

Living	126.5 m ²
Garage	43.8 m ²
Alfresco	19.4 m ²
Porch	7.3 m ²
Total	197.0 m²

Upper Floor

Living	132.3 m ²
Balcony	7.9 m ²
Voids	5.7 m ²
Verandah	26.1 m ²
Total	172.0 m²
Terrace	13.4 m ²
Grand Total	382.4 m²



*Disclaimer: Subject to site limitations. Images and photographs may depict fixtures, finishes and features either not supplied by G.J. Gardner Homes or not included in any price stated. For detailed home pricing or to discuss time program please talk to a New Homes Consultant. QBCC: 112776

Give us a call or drop in for a chat today.
Unit 1, 152 Boat Harbour Drive, Pialba

Contact G.J. Gardner Homes Fraser Coast
 Call **07 4325 4888** or visit gjgardner.com.au

Visit our Display Home:
44 Hillyard Street, Pialba

Display Home Open:
Daily 9am - 4pm

Building Fraser Coast.
 Your trusted local.

G.J. Gardner. HOMES