



Kimberley 225

19 Olive Ave, Greenbank

🛏️ 4 | 🚿 2 | 🚗 2

Build this home with all inclusions from \$263,274*

Resort Facade
(as standard) from

\$240,052*

Hamptons Facade
(as standard) from

\$242,406*

Hamptons Facade
(as displayed) from

\$263,274*

Display Inclusions

900mm Westinghouse
Freestanding Cooker

900mm Westinghouse
Rangehood

40L Westinghouse Microwave

T2 Timber Frames & Trusses

2550mm High Ceilings

Colorbond Roof

Resort Façade

Stacked Stone Feature tiles

Timber to front facade

Matte Black Tapware

Free Standing Bath

Gold Range Floor Coverings

Alarm System

Daikin Ducted Air-Conditioning
with MyAir Control

Cabinetry to Laundry

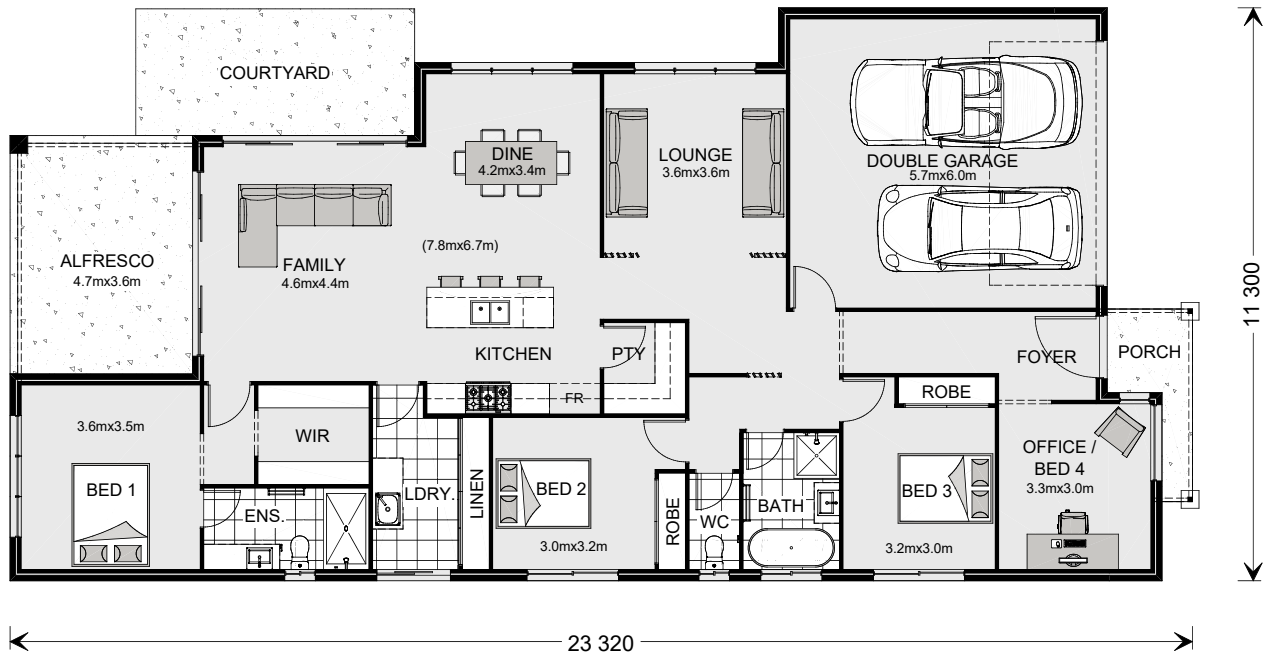
Stone Benchtops throughout

Glass Splash Splashback

Timber Screen feature panels

Artimus Hybrid Flooring

Landscaping & Driveway



Images depict 225 Resort facade. 225 Resort floorplan.

Kimberley 225

4 2 2

Floor Areas

Living	166.4 m ²
Garage	37.3 m ²
Alfresco	16.9 m ²
Porch	4.1 m ²
Total	224.7 m²



***Disclaimer:** Images and photographs may depict fixtures, finishes and features either not supplied by G.J. Gardner Homes or not included in any price stated. For detailed home pricing or to discuss our building time program please talk to a New Homes Consultant. QBCC: 15006819

Jimboomba Office:

14–20 Magnesium Drive, Crestmead

Contact G.J. Gardner Homes Jimboomba

Call 07 3803 6380 or visit gjgardner.com.au

Visit our Display Home:

19 Olive Ave, Greenbank

Display Home Open:

Open Daily 10am - 5pm

Building Jimboomba.

Your trusted local.

G.J. Gardner. HOMES