



Portside 270

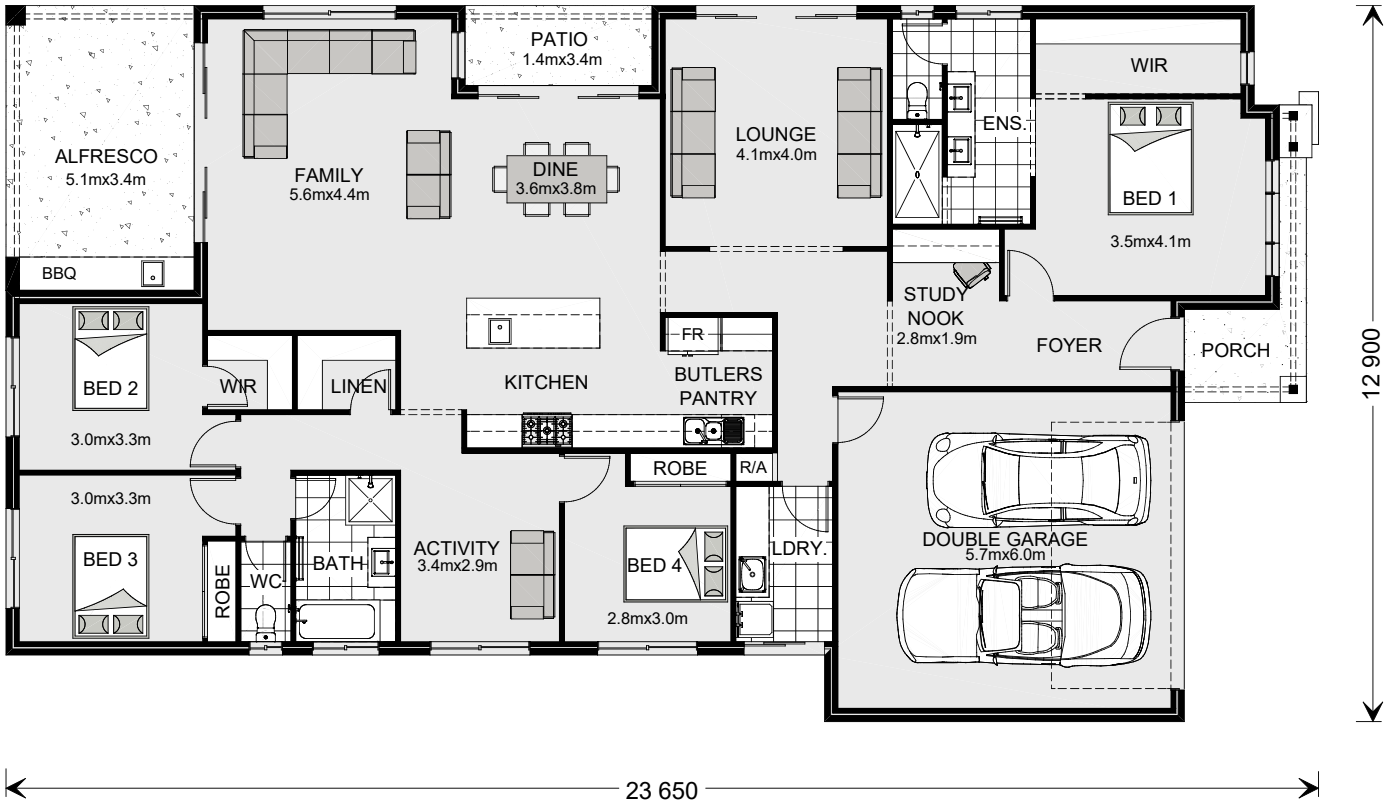
13 Swan Lake Blvd, Sale

4 | 2 | 2

The Portside is a home designed with your family in mind.

Boasting three living zones, the Portside design includes a separate area for the kids, a master retreat for you and a large, open-plan living space. Topped with a separate lounge room, it's the ultimate choice for large families, growing families, or hosting the extended family!

Outdoor living is abundant in this Portside, with a patio and large alfresco area helping to extend the indoor living space further, making it even more spacious, with elegant flow. The extra features have not been forgotten with everything from the double ensuite in the master, through to the study nook, walk-in-linen, powder room, large laundry and more - there's nothing you won't love about the Portside range!



Portside 270

4 2 2

Floor Areas

Living	205.3 m ²
Garage	37.4 m ²
Alfresco	17.4 m ²
Porch	5.5 m ²
Patio	4.9 m ²
Total	270.5 m²



***Disclaimer:** Images and photographs may depict fixtures, finishes and features either not supplied by G.J. Gardner Homes or not included in any price stated. Cover image depicts Portside 270 with Traditional facade. Floorplan Portside 270 Traditional plan. For detailed home pricing or to discuss time program please talk to a New Homes Consultant. APR Constructions CDB-U 62062. Business name G.J. Gardner Homes Central Gippsland.

Central Gippsland Office:
85 MacArthur St, Sale

Contact G.J. Gardner Homes Central Gippsland
 Call **(03) 5143 1499** or visit gjgardner.com.au

Building Central Gippsland.
 Your trusted local.

G.J. Gardner. HOMES