



Long Bay 293

30 Leslie Crescent, Baringa

 4 |  2.5 |  2

“Capture the essence of Hamptons style”

Bring family and friends together in the open plan living area where a large kitchen with butler's pantry connects effortlessly with the dining, family and outdoor covered Alfresco.

Retreat to the lounge room with direct access to a private courtyard awaits. A large private master bedroom boasts a double ensuite, a large walk-in robe and a retreat or study space. The children have their own space in a unique Kids zone with activity room, bathroom, Powder room and 3 bedrooms including walk in robes.

Building Sunshine Coast South.
Your trusted local.



Fixed
Build Time



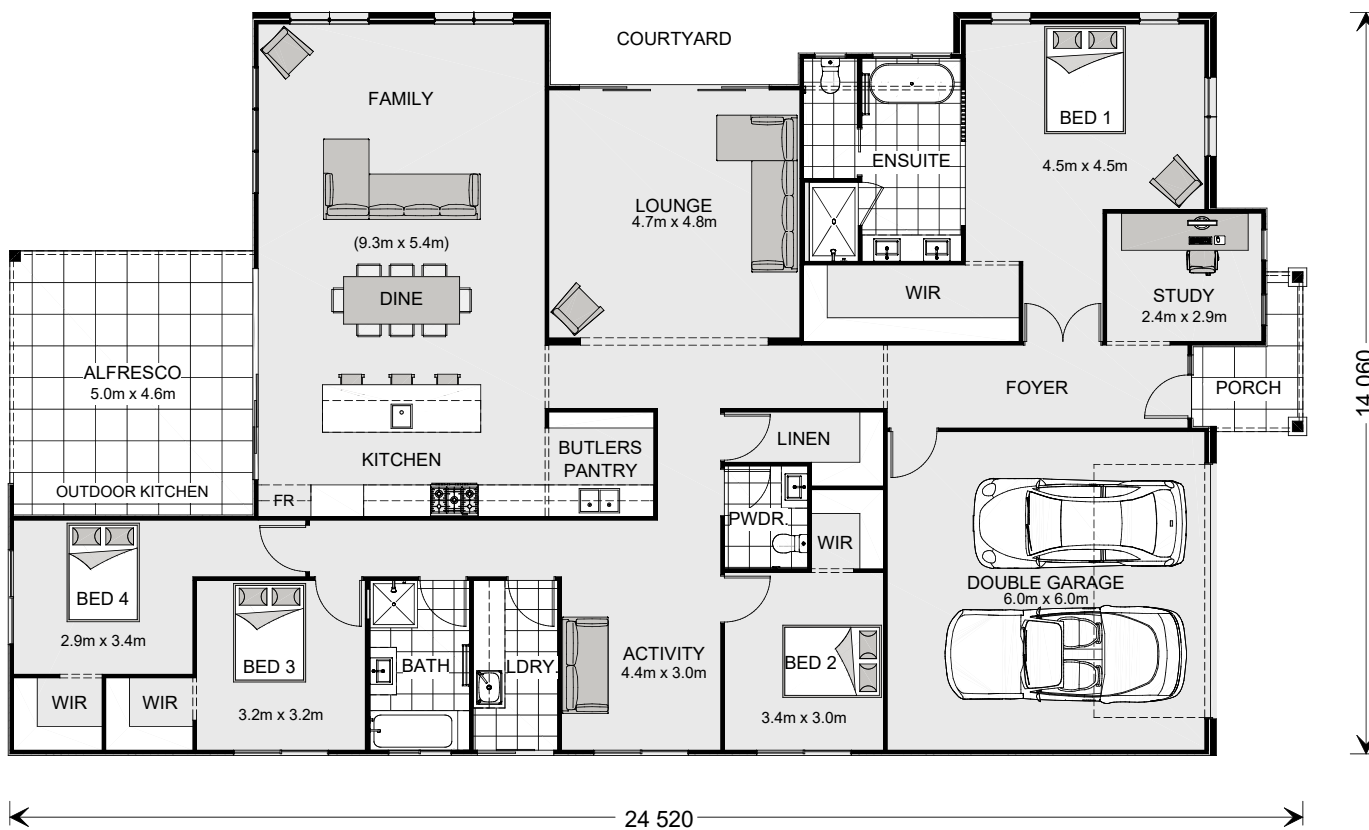
Fixed
Build Price



No. 1 Rated Australian
Home Builder By You



Your Design
or Ours



Images depict 293 Hamptons facade. 293 Hamptons floorplan.

Long Bay 293

4 Beds | 2.5 Baths | 2 Car

Floor Areas

Living	228.5 m ²
Garage	38.2 m ²
Alfresco	23.4 m ²
Porch	4.4 m ²
Total	293.4 m²



***Disclaimer:** Subject to site limitations. Images and photographs may depict fixtures, finishes and features either not supplied by G.J. Gardner Homes or not included in the price stated. For detailed home pricing please talk to a New Homes Consultant. QBCC: 1121765

Give us a call or drop in for a chat today.
15 Nicklin Way, Minyama
 Contact G.J. Gardner Homes on
07 5478 4144 or visit gjgardner.com.au

Visit our Display Homes:
 30 Leslie Crescent, Baringa
 32 Leslie Crescent, Baringa

Display Homes Open:
 Open daily, 10am - 4pm

Building Sunshine Coast South.
 Your trusted local.

G.J. Gardner. HOMES