



# Oceanside 238

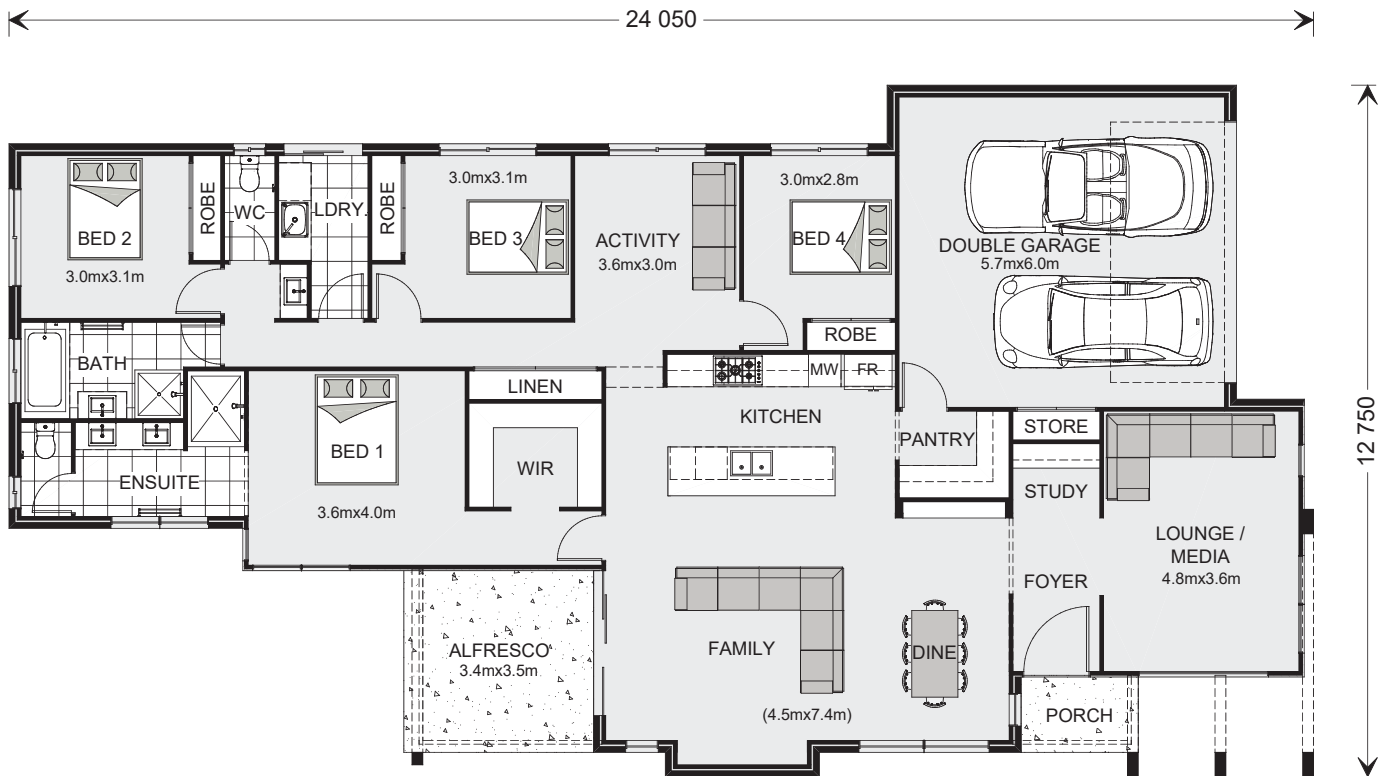
10 Dublin Avenue, Springfield Rise, Spring Mountain

4 | 2 | 2

**“Allow yourself to imagine the lifestyle you’ve always wanted, in the home you deserve!”**

This Oceanside 238 is designed with today’s family in mind. These elegant homes provide multiple private living zones, including a separate media/lounge room, ensuring plenty of space for everyone.

Stylish interiors and flowing open plan areas lead seamlessly from indoors to outdoors, where you can relax, entertain and enjoy the private Alfresco and a generous family area. Spacious and stylish, Oceanside Designs embody the best of contemporary living.



Images depict 238 Beach facade. 238 Beach floorplan.

## Oceanside 238

4 Beds | 2 Baths | 2 Cars

### Floor Areas

Living	185.9 m <sup>2</sup>
Garage	37.2 m <sup>2</sup>
Alfresco	11.8 m <sup>2</sup>
Porch	3.1 m <sup>2</sup>
<b>Total</b>	<b>238.0 m<sup>2</sup></b>



**\*Disclaimer:** Subject to site limitations. Images and photographs may depict fixtures, finishes and features either not supplied by GJ Gardner Homes or not included in the price stated. For detailed home pricing please talk to a New Homes Consultant. QBCC: 1073307

Give us a call or drop in for a chat today.  
**5/21 Technology Drive, Augustine Heights**

Contact G.J. Gardner Homes Springfield  
 on **07 3470 5666** or visit [gjgardner.com.au](http://gjgardner.com.au)

**Building Springfield.**  
 Your trusted local.

**G.J. Gardner.** HOMES