



# Elanora 240

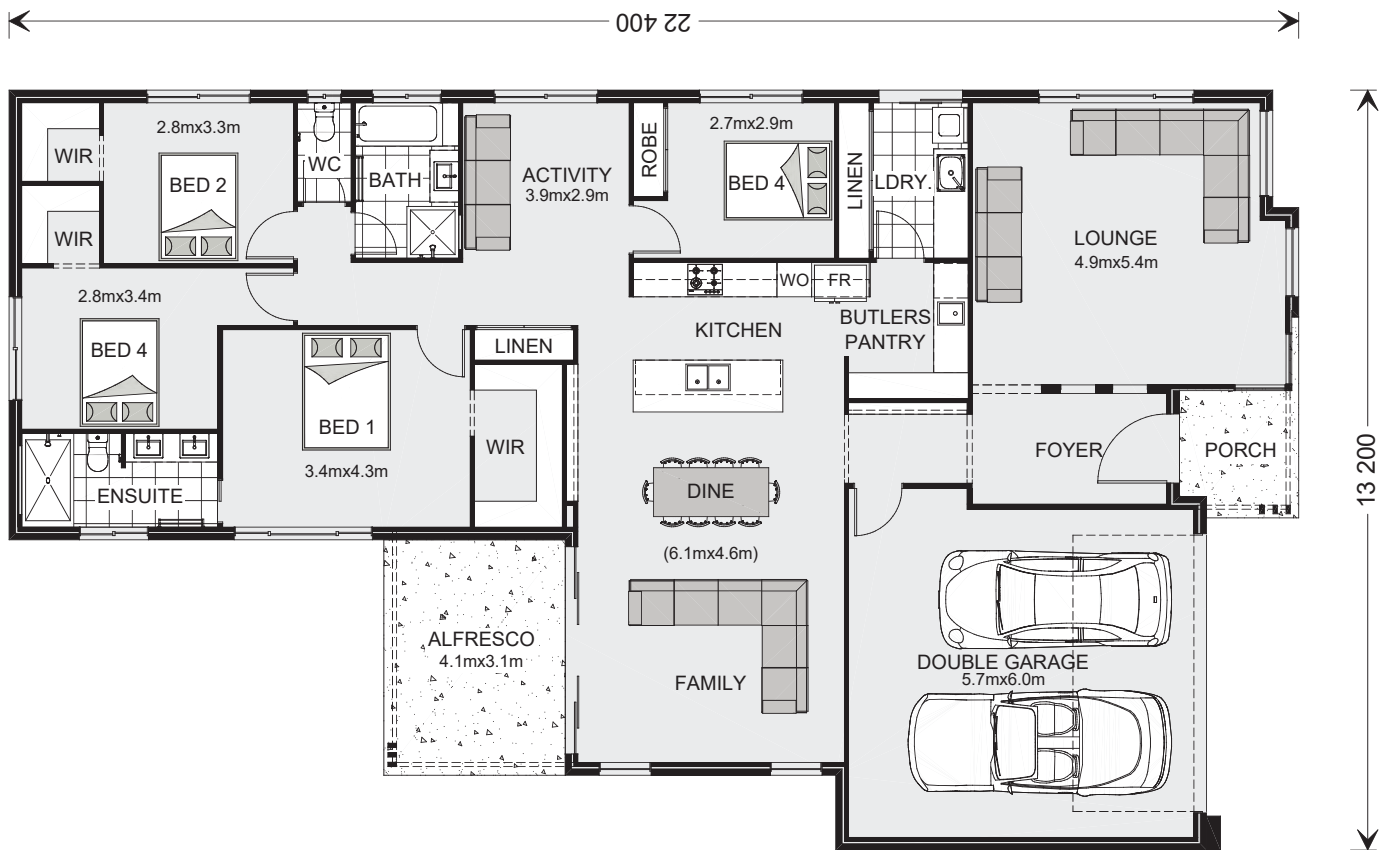
36 Bronzewing Circuit, Bahrs Scrub

🛏️ 4 | 🚿 2 | 🚗 2

**“A home designed to enhance  
and embrace your lifestyle!”**

The Elanora 240 Design will have you not just living the great Australian dream but surpassing it. This home provides separate living zones with natural light and cooling cross breezes.

Enjoy all the comforts this great design brings and experience the home you always wished to have. Elegant form and perfect function, a winning combination.



Images depict 240 Resort facade. 240 Resort floorplan.

## Elanora 240

4 2 2

### Floor Areas

Living	184.75 m <sup>2</sup>
Garage	37.95 m <sup>2</sup>
Alfresco	12.88 m <sup>2</sup>
Porch	4.65 m <sup>2</sup>
<b>Total</b>	<b>240.24 m<sup>2</sup></b>



**\*Disclaimer:** Subject to site limitations. Images and photographs may depict fixtures, finishes and features either not supplied by G.J. Gardner Homes or not included in the price stated. For detailed home pricing please talk to a New Homes Consultant. QBCC: 1091125

Give us a call or drop in for a chat today.  
**Unit 1/2 Millennium Circuit, Helensvale**  
 Contact G.J. Gardner Homes Gold Coast on  
**07 5502 3642** or visit [gfgardner.com.au](http://gfgardner.com.au)

**Visit our Display Homes:**  
 15-17 Clover Way, Helensvale  
 9 Sudbury Drive, Pimpama  
 36 Bronzewing Circuit, Bahrs Scrub

**Display Homes Open:**  
 Open daily, 10am - 5pm  
 Open daily, 10am - 5pm  
 Saturday - Wednesday, 10am - 5pm

**Building Gold Coast.**  
 Your trusted local.

**G.J. Gardner. HOMES**