



# Coolum 262

12 Wrasse St, Northshore Display Village, Burdell

4 Beds | 2.5 Baths | 2 Cars

**Inclusions:**

- + 4 bedrooms
- + Built in wardrobes
- + Multiple living areas
- + Open plan kitchen and dining
- + Butlers Pantry
- + Media Room
- + Double Bay Garage
- + Large Alfresco Area

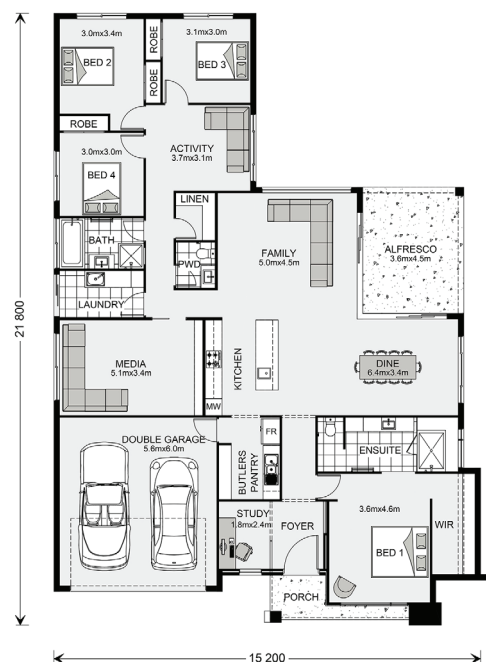
**Give us a call or drop in for a chat today.**

G.J. Gardner Homes Townsville  
Call: 4775 5656  
Visit: [www.gjgardner.com.au](http://www.gjgardner.com.au)

**Displays Open Daily:**  
Open: Weekdays 9am - 5pm.  
Weekends 10am - 5pm.

**Design Centre**

Shop 18, Hyde Park Centre  
Hyde Park



**DISCLAIMER:** Images and photographs may depict fixtures, finishes and features either not supplied by G.J. Gardner Homes or not included in any price stated. For detailed home pricing or to discuss our building time program please talk to a New Homes Consultant. QBCC: 1124158

**Building Townsville.**  
Your trusted local.

