



# Benowa 221

69 Attenborough Crescent, North Lakes

 3 |  2 |  2

**“The perfect place to call home!”**

The Benowa has been cleverly designed to afford all the members of the household with privacy. With three distinct and separate living areas this home will cater nicely to the busiest of families. There's not much more you could ask for when looking for the perfect family home.

**Building Brisbane North & Bayside.**  
Your trusted local.



Fixed  
Build Time



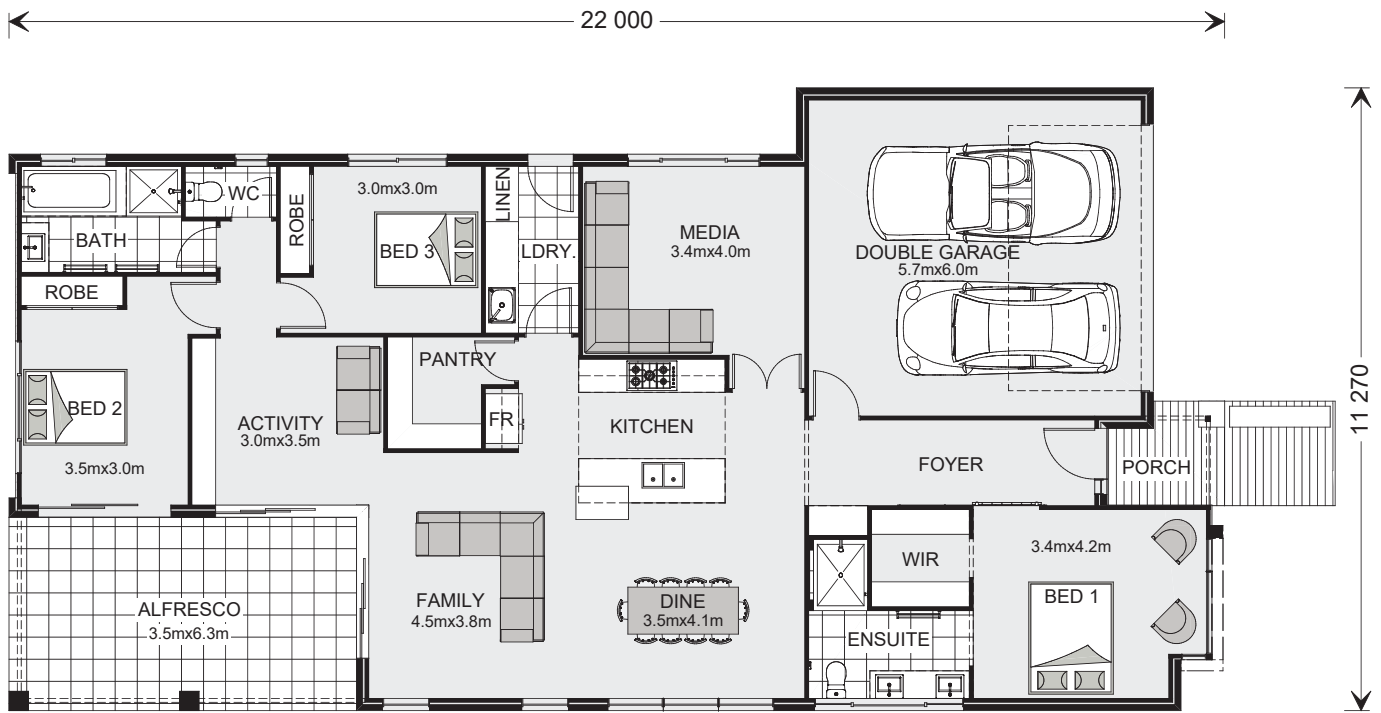
Fixed  
Build Price



No. 1 Rated Australian  
Home Builder By You



Your Design  
or Ours



Images depict 221 Resort facade. 221 Resort floorplan.

## Benowa 221

3 Beds 2 Baths 2 Car

### Floor Areas

Living	158.1 m <sup>2</sup>
Garage	37.5 m <sup>2</sup>
Alfresco	22.0 m <sup>2</sup>
Porch	3.6 m <sup>2</sup>
<b>Total</b>	<b>221.2 m<sup>2</sup></b>



**\*Disclaimer:** Subject to site limitations. Images and photographs may depict fixtures, finishes and features either not supplied by G.J. Gardner Homes or not included in any price stated. For details pricing or to discuss our building time program please talk to a New Homes Consultant. QBCC: 1052162

## Building Brisbane North & Bayside.

Your trusted local.

Give us a call or drop in for a chat today. Contact G.J. Gardner Homes Brisbane North & Bayside on **07 3881 0311** or visit [gjjardner.com.au](http://gjjardner.com.au)

Visit our Display Homes:

**19 Bedarra Crescent, Burpengary**  
**21 Bedarra Crescent, Burpengary**  
**28 Kestrel Street, Rochedale**  
**30 Kestrel Street, Rochedale**  
**4 Crusade Street, Newport**  
**6 Crusade Street, Newport**

Display Homes Open:

**Open Daily 10am - 5pm**

**G.J. Gardner.** HOMES

**Colorbond®**

COLORBOND® steel is a trade mark of BlueScope Steel Limited  
 ABN 16 000 011 058. All rights reserved.