

# Kingscliffe 350

🛏️ 4 | 🚿 2.5 | 🚗 2

## “A home that caters for the ultimate entertainer”

The large outdoor entertaining zone and multiple living areas make this home perfect for the entertainer. With an open plan kitchen, butler’s pantry and family room that opens onto the large alfresco and media room, the Kingscliffe 350 makes having family and friends over a breeze.

With a large Master bedroom with ensuite and walk in robe, plus double garage, this home will be the envy of the street.

**Building Gold Coast.**  
Your trusted local.



Fixed Build Time



Fixed Build Price

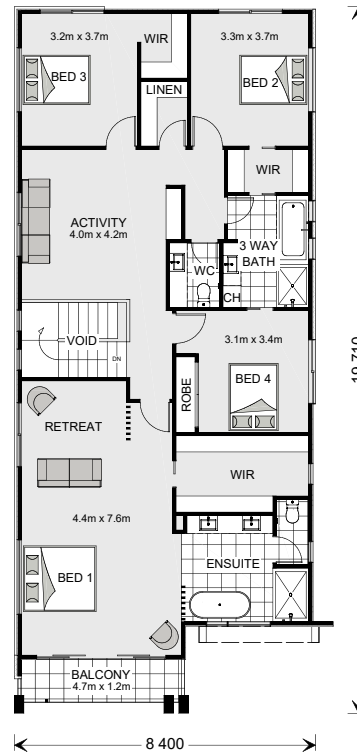
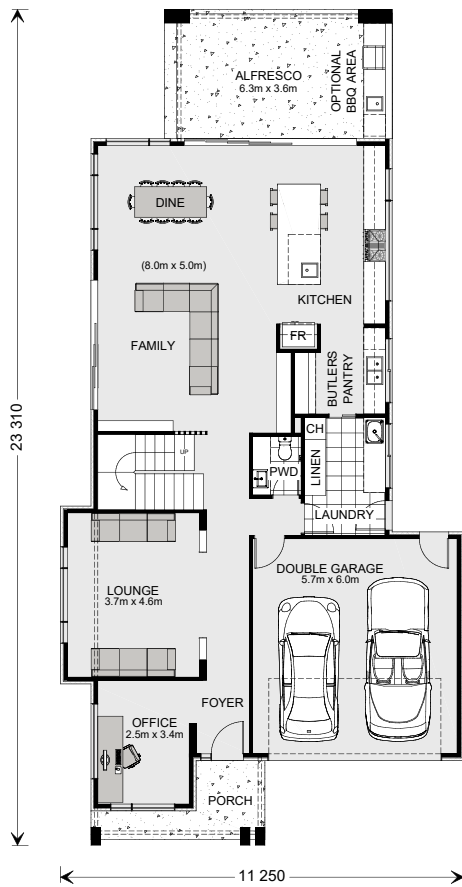


No. 1 Rated Australian Home Builder By You



Your Design or Ours





Images depict 350 Urban facade. 350 Urban floorplan.

## Kingscliffe 350

4 2.5 2

### Ground Floor

Living	129.9 m <sup>2</sup>
Garage	36.8 m <sup>2</sup>
Alfresco	22.9 m <sup>2</sup>
Porch	6.6 m <sup>2</sup>
<b>Total</b>	<b>196.2 m<sup>2</sup></b>

### Upper Floor

Living	142.0 m <sup>2</sup>
Balcony	5.7 m <sup>2</sup>
Voids	6.1 m <sup>2</sup>
<b>Total</b>	<b>153.8 m<sup>2</sup></b>
<b>Grand Total</b>	<b>350.0 m<sup>2</sup></b>



**\*Disclaimer:** Subject to site limitations. Images and photographs may depict fixtures, finishes and features either not supplied by G.J. Gardner Homes or not included in any price stated. For detailed home pricing or to discuss time program please talk to a New Homes Consultant. QBCC 1172776

## Building Gold Coast.

Your trusted local.

Give us a call or drop in for a chat today.

Contact Les Johnson **0414394495** or Matthew Johnson on **0422770335**

G.J. Gardner Homes Gold Coast or visit [gigardner.com.au](http://gigardner.com.au)

Visit our Display Home:

**9 Sudbury Drive, Pimpama**

**15 Clover Way, The Surrounds, Helensvale**

**17 Clover Way, The Surrounds, Helensvale**

Display Home Open:

**Open Daily 10am - 5pm**

**G.J. Gardner.** HOMES

**Colorbond**<sup>®</sup>

COLORBOND<sup>®</sup> steel is a trade mark of BlueScope Steel Limited  
ABN 16 000 011 058. All rights reserved.