



Beachmere 278

4 | 2.5 | 2

“The perfect place to call home!”

With a classic family home feel, this four bedroom home caters to all family sizes and boasts spacious living areas throughout. There is endless places to retreat in this timeless but modern home with a large open plan kitchen, butlers pantry, multiple living areas and double garage.

With a large Master bedroom with ensuite and walk in robe, plus double garage, this home will be the envy of the street.

Building Gold Coast.
Your trusted local.



Fixed
Build Time



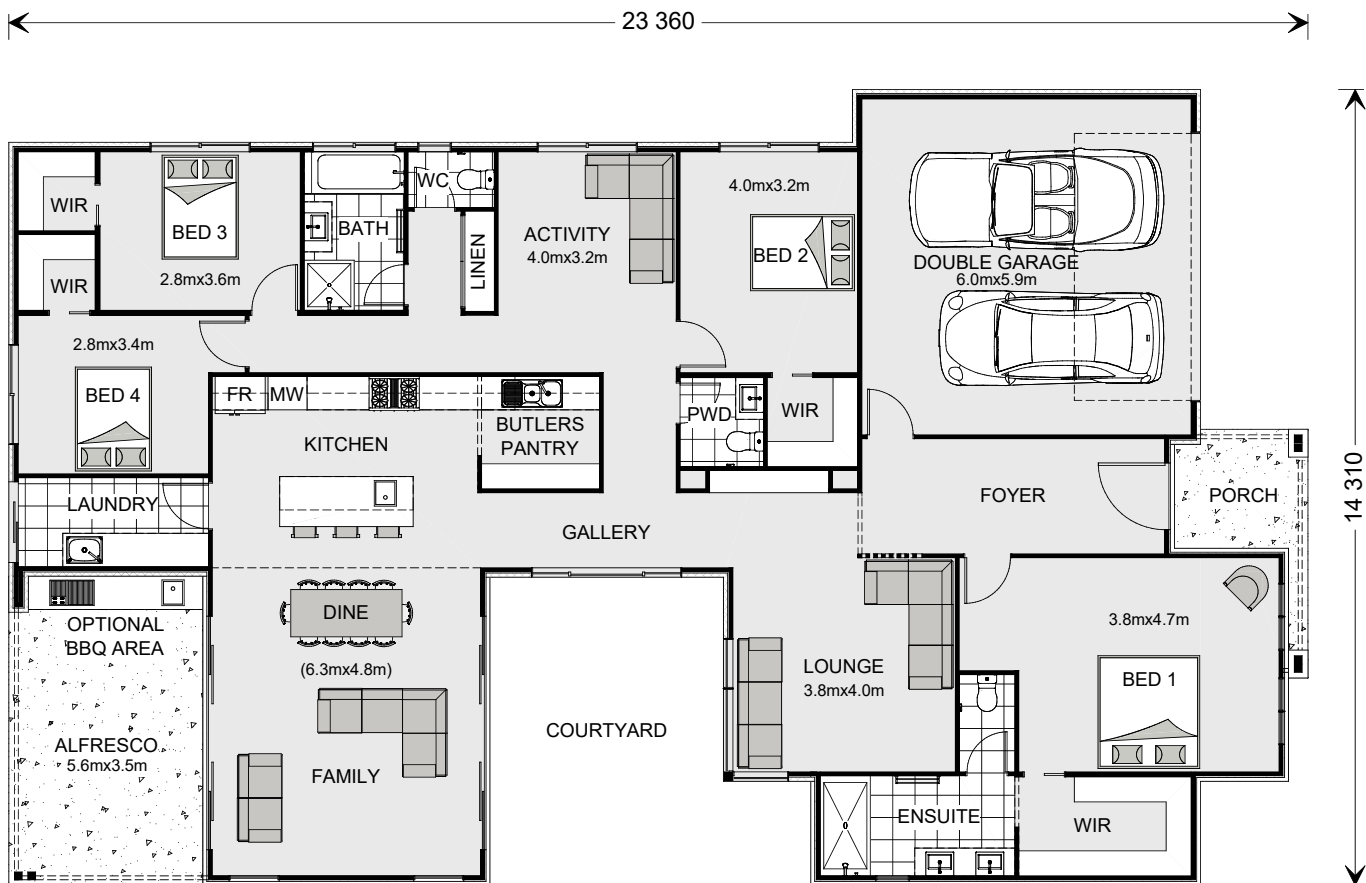
Fixed
Build Price



No. 1 Rated Australian
Home Builder By You



Your Design
or Ours



Images depict 278 Hamptons facade. 278 Hamptons floorplan.

Beachmere 278

4 | 2.5 | 2

Floor Areas

Living	214.3 m ²
Garage	38.1 m ²
Alfresco	19.4 m ²
Porch	5.8 m ²
Total	277.6 m²



***Disclaimer:** Subject to site limitations. Images and photographs may depict fixtures, finishes and features either not supplied by G.J. Gardner Homes or not included in any price stated. For detailed home pricing or to discuss time program please talk to a New Homes Consultant. QBCC 1172776

Building Gold Coast.

Your trusted local.

Give us a call or drop in for a chat today.

Contact Les Johnson **0414394495** or Matthew Johnson on **0422770335**

G.J. Gardner Homes Gold Coast or visit gigardner.com.au

Visit our Display Home:

9 Sudbury Drive, Pimpama

15 Clover Way, The Surrounds, Helensvale

17 Clover Way, The Surrounds, Helensvale

Display Home Open:

Open Daily 10am - 5pm

G.J. Gardner. HOMES

Colorbond®

COLORBOND® steel is a trade mark of BlueScope Steel Limited
ABN 16 000 011 058. All rights reserved.