

Stillwater 260

**“A deceptively large and open
family home for the entertainer”**

4 Crusade Street, Newport



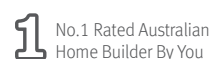
Building Brisbane North & Bayside.
Your trusted local.



Fixed
Build Time



Fixed
Build Price



No.1 Rated Australian
Home Builder By You



Your Design
or Ours

Stillwater 260

3 | 2 | 2

Features two living zones, the Stillwater 260 includes a central courtyard space providing a cool cross breeze throughout the home. With an open plan kitchen, butler pantry and living area opening out onto the impressive alfresco, it is a place to unwind, a place to entertain friends and a place for the family to be together all wrapped in one.

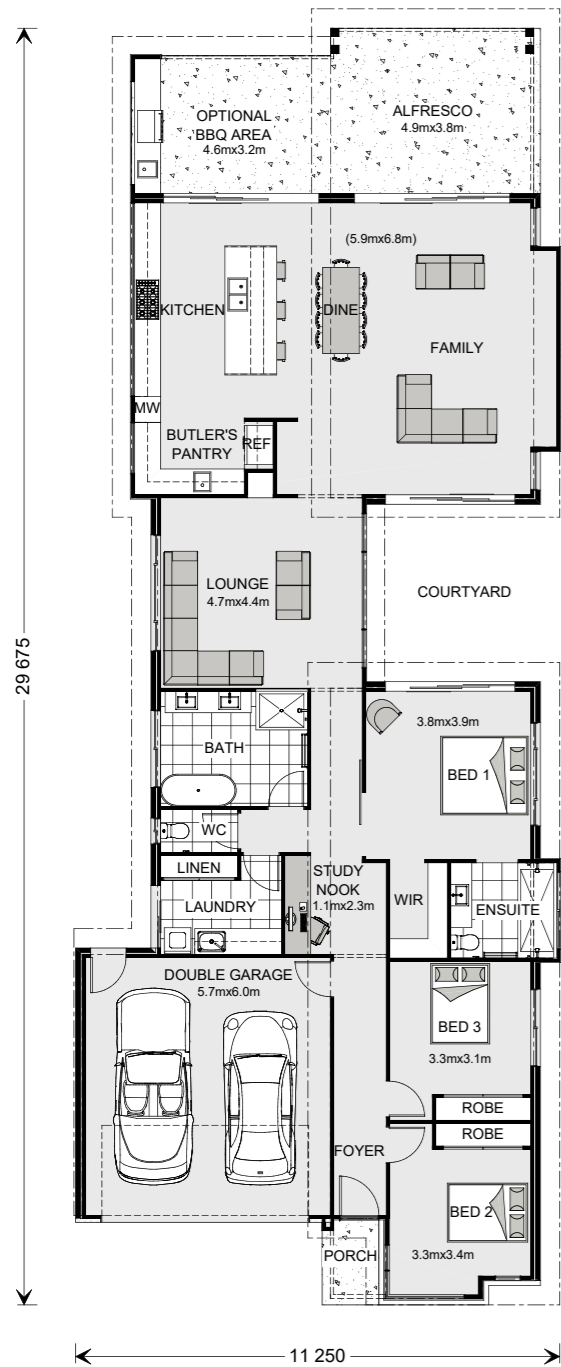
With a large Master bedroom with ensuite and walk in robe, plus double garage, this home is the perfect family home.



Images depict 260 Beach facade. 260 Beach floorplan.

Floor Areas

Living	187.1 m ²
Garage	36.8 m ²
Alfresco	33.5 m ²
Porch	2.6 m ²
Total	260.0 m²



Building together.
Your trusted local.

G.J. Gardner. HOMES

Give us a call or drop in for a chat today.

7/104 Gympie Rd, STRATHPINE, QLD

Contact G.J. Gardner Homes Brisbane North &
Bayside on **3881 0311** or visit gjjardner.com.au

Visit our Display Home:

4 Crusade Street, Newport

Display Home Open:

Saturday to Tuesday 10am – 4pm
or call to book an appointment