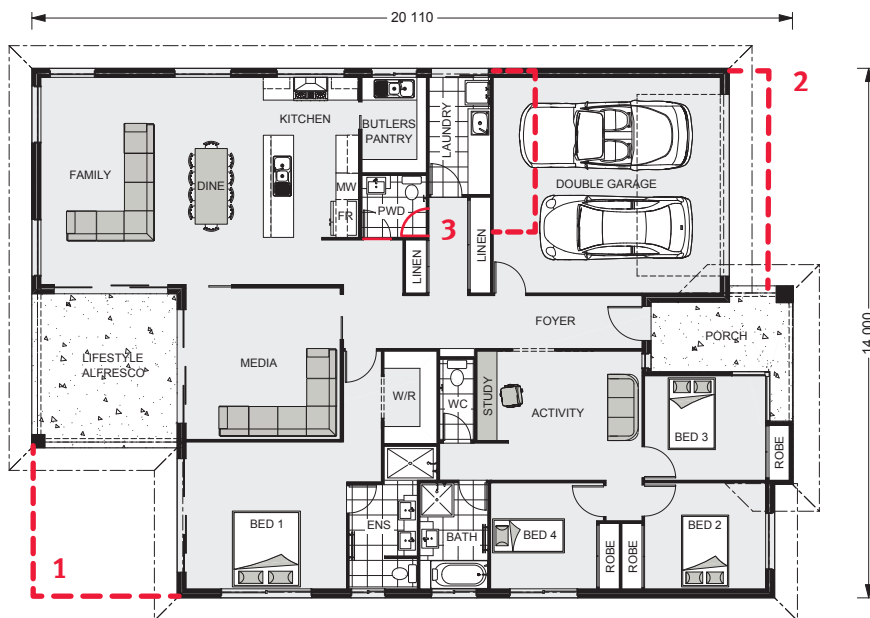


On display.



Hawkesbury 255

4 beds | 2.5 baths | 2 cars



Floor Areas

Living	193.5 m ²
Garage	37.6 m ²
Alfresco	15.6 m ²
Porch	8.6 m ²
Total	255.3 m²

To find the best design that suits your needs.

Call **Mark Tyler** on **0467 973 737**,
Lewis Kelly on **0437 873 737** or
Hayden Stone on **0488 973 737**

Display Home:

6 She Oak Boulevard, Barga
 (Off Moodies Rd)
 Open daily 9am-4pm

Design Centre:

Shop 3/200 Bourbong St,
 Bundaberg
 Call **4159 2333** or
 Visit gigardner.com.au

Changes to Standard plan

1. Extend Alfresco area
2. Extend Garage and add storage
3. Move Linen and PWD room door

Total area now 274m²

“Any plan can be customised to meet your needs, as you can see what we’ve done here.”

- + Choice of facades
- + Fixed price contract
- + Hundreds of designs
- + Most trusted builder
- + Built by Australia’s No.1 Rated National Home Builder

Building Fraser Coast.

Your trusted local.

QBCC: 1172776

G.J. Gardner. HOMES