

On Display.

9 Sudbury Drive,
Pimpama.



ON DISPLAY: 9 Sudbury Drive, Pimpama.

The **Forest Park 308** features a superb blend of modern architectural interiors, quality fittings and inclusions and stylish outdoor entertaining. This home has been designed with families in mind. The open plan living area creates a central point within the home for the family to come together. With extra living areas and study nook there's plenty of breakout areas and space to entertain family and friends.

Features:

- + 4 bedrooms
- + Open plan dining and family leading to expansive alfresco
- + Separate living, activity and study areas
- + Extensive kitchen with butlers pantry
- + Outdoor kitchen with hanging fireplace



DISCLAIMER: Images and photographs may depict fixtures, finishes and features either not supplied by G.J. Gardner Homes or not included in any price stated. For detailed home pricing or to discuss our building time program please talk to a New Homes Consultant. QBCC: 1091125

Forest Park 308.

4  2  2 



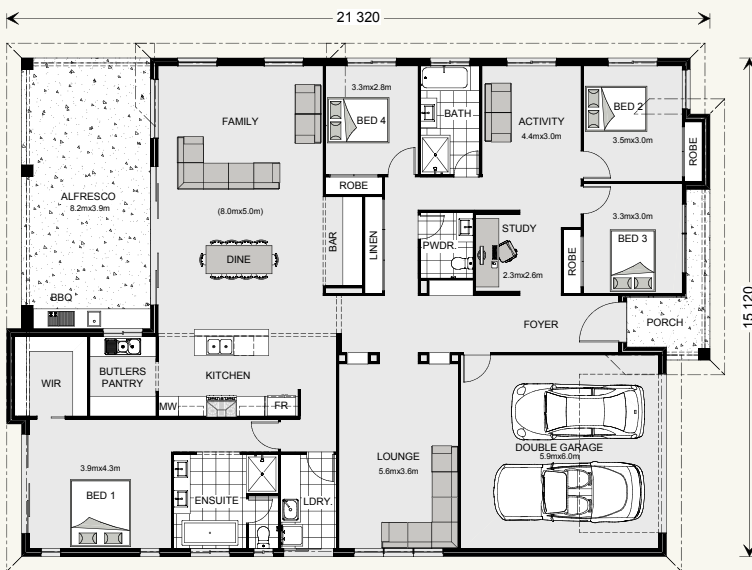
Visit a Display Home near you.

- + 9 Sudbury Drive, Pimpama.
Open: Daily, 10am - 5pm.
- + 159 Riverstone Crossing, Maudsland
Open: Saturday - Thursday, 10am - 5pm.
- + 13 + 15 Elvirie St, Ormeau Hills
Open: Daily, 10am - 5pm.

Call 5502 3642 or visit gjgardner.com.au



ON DISPLAY: 9 Sudbury Drive, Pimpama.



Forest Park 308.

4 2 2

FLOOR AREAS

Living:	230.8 m ²
Garage:	38.4 m ²
Alfresco:	32.0 m ²
Porch:	6.8 m ²
TOTAL:	308.0 m²



DISCLAIMER: Images and photographs may depict fixtures, finishes and features either not supplied by G.J. Gardner Homes or not included in any price stated. For detailed home pricing or to discuss our building time program please talk to a New Homes Consultant. QBCC: 1091125

Visit a Display Home near you.

- + 9 Sudbury Drive, Pimpama.
Open: Daily, 10am - 5pm.
- + 159 Riverstone Crossing, Maudsland
Open: Saturday - Thursday, 10am - 5pm.
- + 13 + 15 Elvirie St, Ormeau Hills
Open: Daily, 10am - 5pm.

Call 5502 3642 or visit gjgardner.com.au