

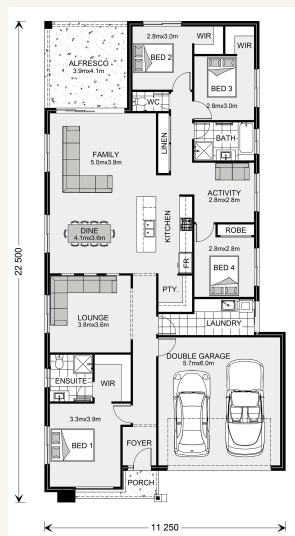


## House and land package from \$550,000\*

**Address:** 120 Yamba Parklands Estate, Yamba

### Inclusions:

- + Concrete Slab, Brick & Tile Constructions
- + All Floor and Window Coverings
- + Ceiling Fans, LED Lights, Double Power Points and Smeg Appliances
- + Flyscreens, TV Antenna, Letterbox, Clothesline
- + Tiled Porch and Alfresco
- + All Site Costs & Council Fees Included. Fixed Price Contract.



\*Images and photographs may depict fixtures, finishes and features either not supplied by G.J. Gardner Homes or not included in any price stated. These items include furniture, swimming pools, pool decks, fences, landscaping - including planter boxes, retaining walls, water features, pergolas, screens and decorative landscaping items such as fencing and outdoor kitchens and barbecues. For detailed home pricing, please talk to a new homes consultant.

## Bridgewater 225 - Element Series

4 2 2

**Give us a call or drop in for a chat today.**

### Office:

Grafton

41-47 Fitzroy St, Grafton NSW 2460

Donald Taylor

New Home Consultant

Call: 0447443866

Email: [donald.taylor@gjgardner.com.au](mailto:donald.taylor@gjgardner.com.au)

Call: 02 6642 8711

Email: [grafton@gjgardner.com.au](mailto:grafton@gjgardner.com.au)

Or visit [gjgardner.com.au](http://gjgardner.com.au)

Welcome **home.**

**G.J. Gardner.** HOMES