

The Edgewater



Allow yourself to imagine the lifestyle you've always wanted, in the home you deserve!

How would you like to live in a house which epitomises the best of indoor and outdoor entertaining, one which takes housing design to a whole new level?

The Edgewater, exclusive to G.J. Gardner Homes, consistently delivers the 'wow' factor. Featuring a well thought out living area, an open plan family room making an effortless connection to the large alfresco and a formal dining area with its own patio. When seclusion is needed the master bedroom allows you to pamper yourself with a stylish walk-in robe and an elegant ensuite featuring double vanities.

Edgewater designs, a stunning new addition to Australia's best home range.

The Edgewater designs offer individually crafted facades that will inspire you by providing a choice of homes that reflect your personal lifestyle and preferences.

Contact us on **132 789**

or visit **gjgardner.com.au**

Welcome **home.**

G.J. Gardner. **HOMES**

The Edgewater facade options.

G.J. Gardner's tailored facades give you the opportunity to personalise your home. With Executive, Classic, Resort, Urban, Traditional and Beach facades to choose from, you can bring your home to life, making it as individual as you are!

EXECUTIVE



RESORT



TRADITIONAL



Images may depict fixtures, finishes and features not supplied by G.J. Gardner Homes. These items include planter boxes, retaining walls, water features, pergolas, screens and decorative landscaping items such as fencing and outdoor kitchens and barbecues.

CLASSIC



URBAN



BEACH



**With you every
step of the way.**

Partner with G.J. Gardner Homes, and together we'll transform your ideas into reality. Let us guide you through the entire home building process. With our local knowledge and insights coupled with access to your area's local architects, tradesmen and homebuilders, you know you'll be completely looked after by G.J. Gardner Homes.

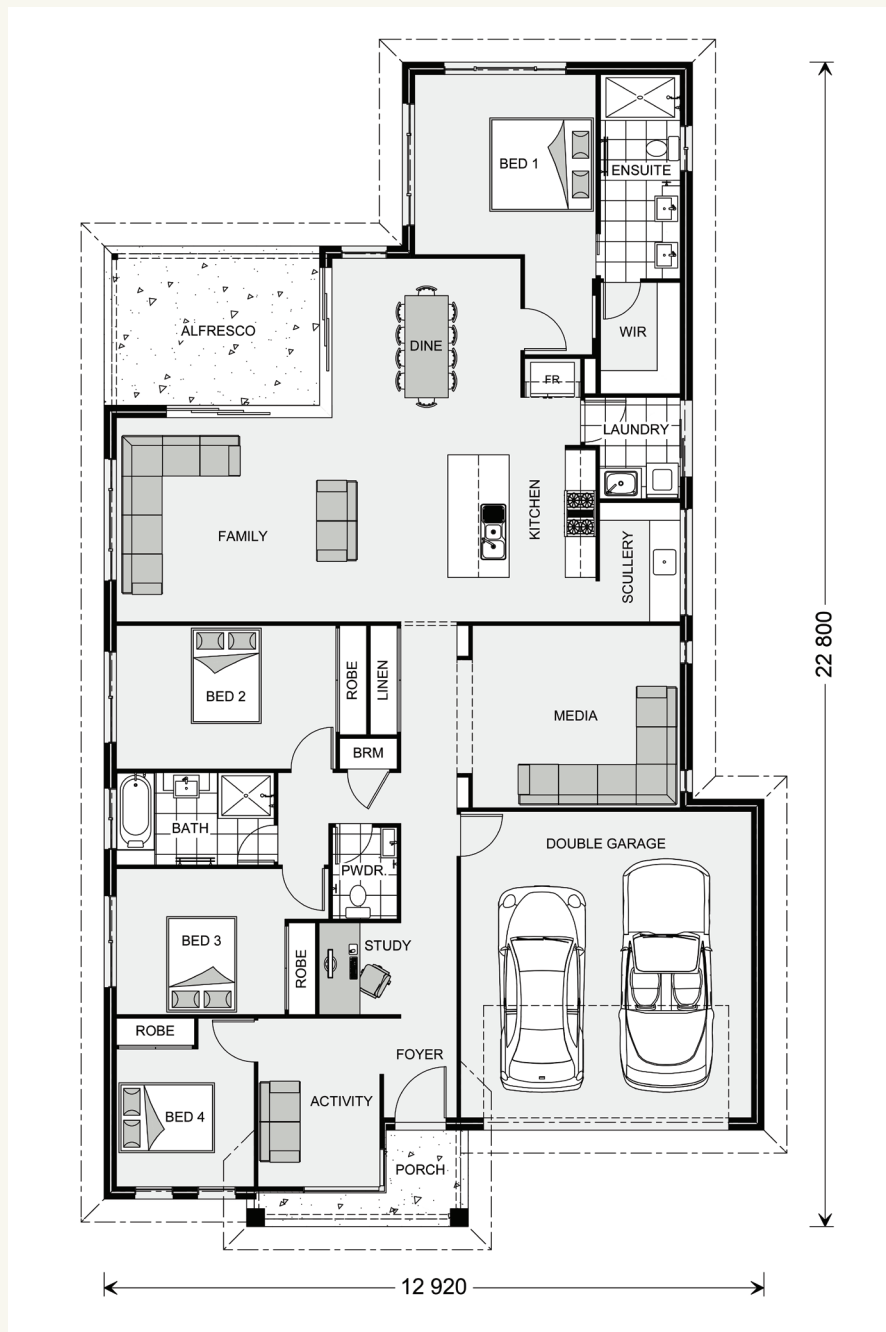
No two houses ever need to be the same. We have 24 flexible home designs to choose from, so your fully customised home reflects your family's unique lifestyle and budget.

The Edgewater 241.

4  2.5  2 

FEATURES

- + Media room
- + Study
- + Activity room
- + Family room



SPECIFICATIONS

Living: 185.3 sq.m

Garage: 37.4 sq.m

Alfresco: 13.2 sq.m

Porch: 5.0 sq.m

Total: 240.9 sq.m

TOTAL AREA

Width: 12.920 m

Length: 22.800 m

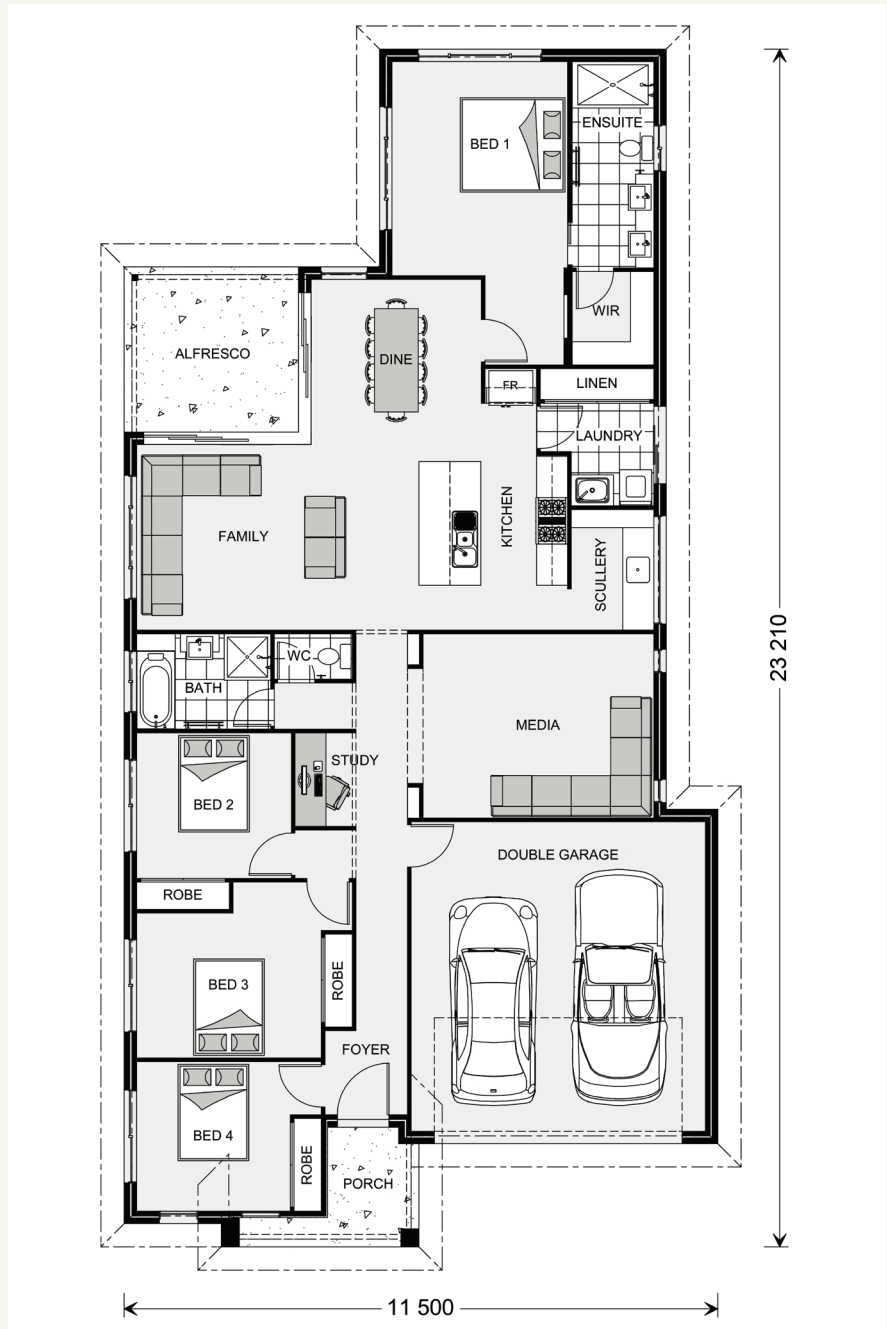
NOTES

The Edgewater 219.



FEATURES

- + Media room
- + Open plan family room
- + Kitchen with scullery
- + Study



The facades shown on this brochure are not representations of this floor plan.

SPECIFICATIONS

- Living:** 165.4 sq.m
- Garage:** 37.4 sq.m
- Alfresco:** 10.8 sq.m
- Porch:** 5.3 sq.m
- Total:** 218.9 sq.m

TOTAL AREA

- Width:** 11.500 m
- Length:** 23.210 m

NOTES

The Edgewater 203.



FEATURES

- + Media room
- + Open plan family room
- + Spacious ensuite
- + Lifestyle alfresco



The facades shown on this brochure are not representations of this floor plan.

SPECIFICATIONS

- Living:** 150.7 sq.m
- Garage:** 37.4 sq.m
- Alfresco:** 10.8 sq.m
- Porch:** 4.5 sq.m
- Total:** 203.4 sq.m

TOTAL AREA

- Width:** 11.500 m
- Length:** 21.630 m

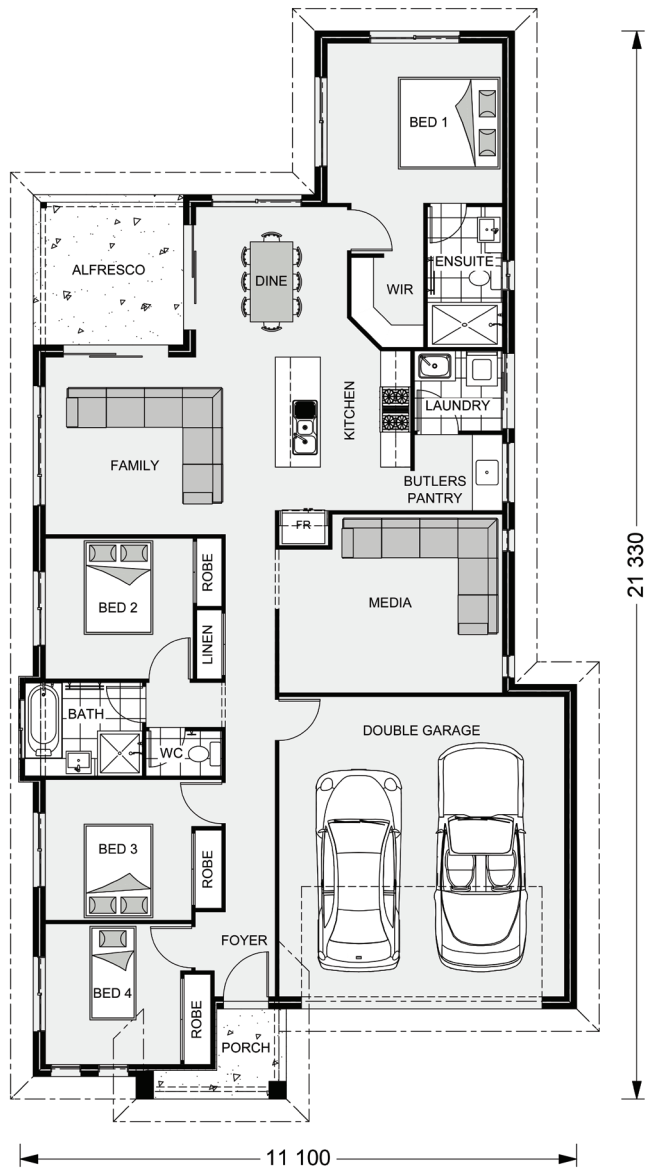
NOTES

The Edgewater 186.



FEATURES

- + Family room
- + Butler's pantry
- + Media room
- + Lifestyle alfresco



The facades shown on this brochure are not representations of this floor plan.

SPECIFICATIONS

Living: 135.9 sq.m

Garage: 37.4 sq.m

Alfresco: 9.0 sq.m

Porch: 3.5 sq.m

Total: 185.8 sq.m

TOTAL AREA

Width: 11.100 m

Length: 21.330 m

NOTES

**Locals always
at hand.**

Designing and building your ideal home is an exciting experience, and when you partner with professional and established builders – G.J. Gardner Homes, the journey will be fulfilling and rewarding.



G.J. Gardner. HOMES

Internal photographs are from different G.J. Gardner Homes to those featured in this brochure.