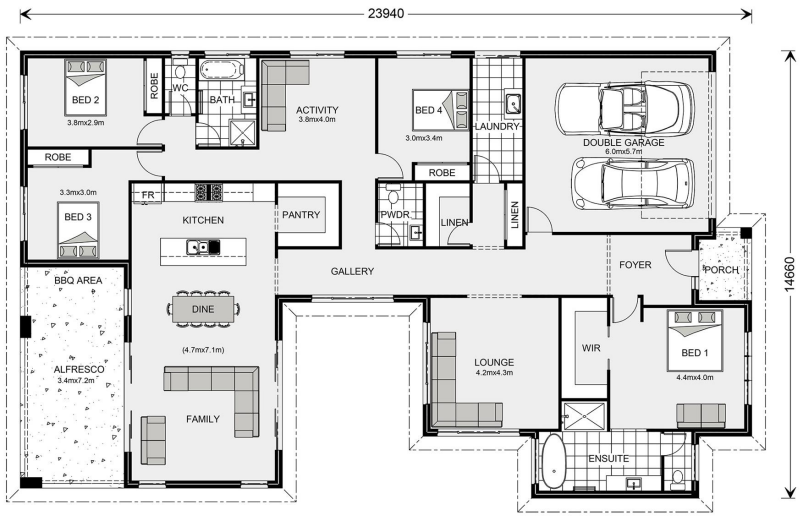


## House and land package from \$598,200\*

Address: 41 Waterlink Esplanade, Horsham

### Inclusions:

- + Family home
- + Concrete Driveway
- + Plain Concrete Driveway
- + Open Plan Living
- + Good Heating and Cooling
- + All Horsham Site Costs



\*Images and photographs may depict fixtures, finishes and features either not supplied by G.J. Gardner Homes or not included in any price stated. These items include furniture, swimming pools, pool decks, fences, landscaping - including planter boxes, retaining walls, water features, pergolas, screens and decorative landscaping items such as fencing and outdoor kitchens and barbecues. For detailed home pricing, please talk to a new homes consultant.

## Beachmere 303 - Element Series

4 2 2

**Give us a call or drop in for a chat today.**

### Office:

Ararat  
92 Barkly Street, Ararat Vic 3377  
Jacorey Pty Ltd, CDB-U 49694.

Kerry Wade

New Home Consultant

Call: +61428852820

Email: [kerry.wade@gjgardner.com.au](mailto:kerry.wade@gjgardner.com.au)

Call: 03 5352 3298

Email: [ararat@gjgardner.com.au](mailto:ararat@gjgardner.com.au)

Or visit [gjgardner.com.au](http://gjgardner.com.au)

Welcome **home.**

**G.J. Gardner.** HOMES