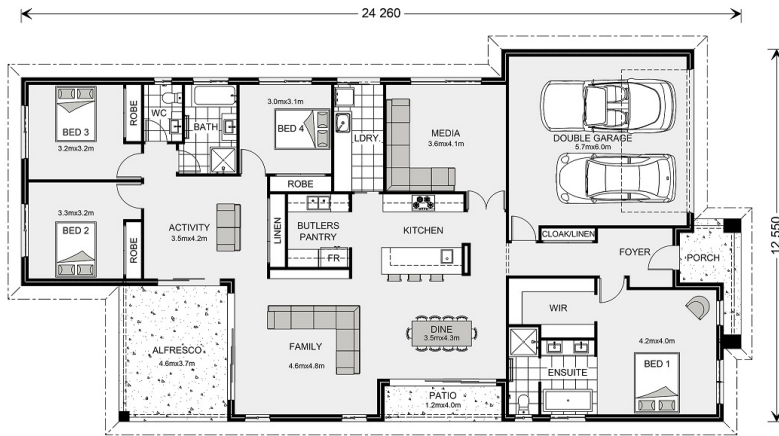


## House and land package from \$444,765\*

Address: 297 Mclean Drive , Horsham

### Inclusions:

- + \* Classic Facade As Displayed (other optional facades)
- + \* Carpet & Tiling Throughout
- + \* Ducted Heating & Evaporative Cooling
- + \* Plain Concrete Driveway
- + \* Alfresco
- + \* Brick Letterbox



\*Images and photographs may depict fixtures, finishes and features either not supplied by G.J. Gardner Homes or not included in any price stated. These items include furniture, swimming pools, pool decks, fences, landscaping - including planter boxes, retaining walls, water features, pergolas, screens and decorative landscaping items such as fencing and outdoor kitchens and barbecues. For detailed home pricing, please talk to a new homes consultant.

## Benowa 260 - Element Series



**Give us a call or drop in for a chat today.**

### Office:

Ararat  
92 Barkly Street, Ararat Vic 3377  
Jacorey Pty Ltd, CDB-U 49694.

**Kerry Wade**

**New Home Consultant**

**Call: +61428852820**

**Email: [kerry.wade@gjgardner.com.au](mailto:kerry.wade@gjgardner.com.au)**

**Call: 03 5352 3298**

**Email: [ararat@gjgardner.com.au](mailto:ararat@gjgardner.com.au)**

**Or visit [gjgardner.com.au](http://gjgardner.com.au)**

Welcome **home.**

**G.J. Gardner.** **HOMES**