

# Avalon Bay.



**Allow yourself to imagine the lifestyle you've always wanted, in the home you deserve!**

From the moment you step into the Avalon Bay you'll appreciate the stylish design of this two-storey home, which offers so much to the family who wants an abundance of space.

Downstairs the family can choose where they want to get together: a lounge room, dining area or a gorgeous family centre which flows effortlessly onto the home's large alfresco. Upstairs four generous bedrooms allow for privacy from the living areas on the ground floor and so give everyone their own space.

The Avalon Bay design, exclusive to G. J. Gardner Homes, takes housing design to the next level.

The Avalon Bay Design offers individually crafted facades that will inspire you by providing a choice of homes that reflect your personal lifestyle and preferences.

Contact us on **132 789**  
or visit **[gjpgardner.com.au](http://gjpgardner.com.au)**

Welcome **home.**

**G.J. Gardner.** **HOMES**

## Avalon Bay facade options.

G.J. Gardner's tailored facades give you the opportunity to personalise your home. With Executive, Resort, Classic and Urban facades to choose from, you can bring your home to life, making it as individual as you are!



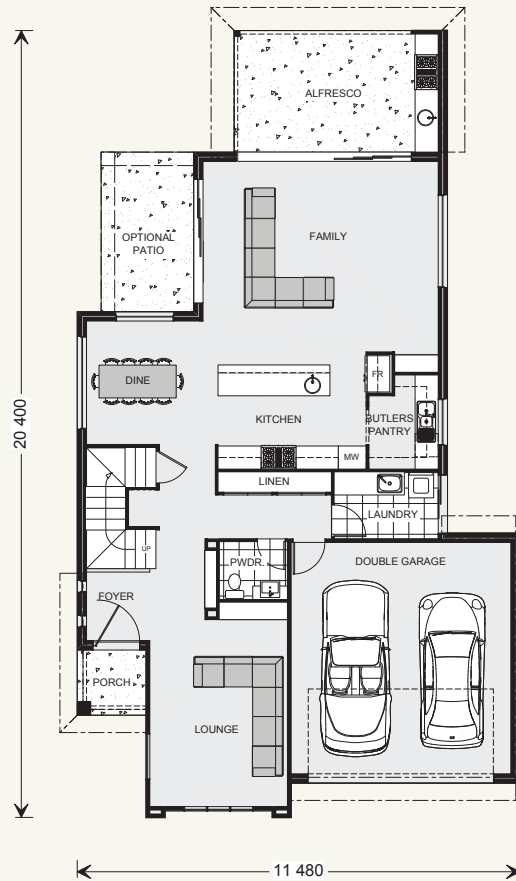
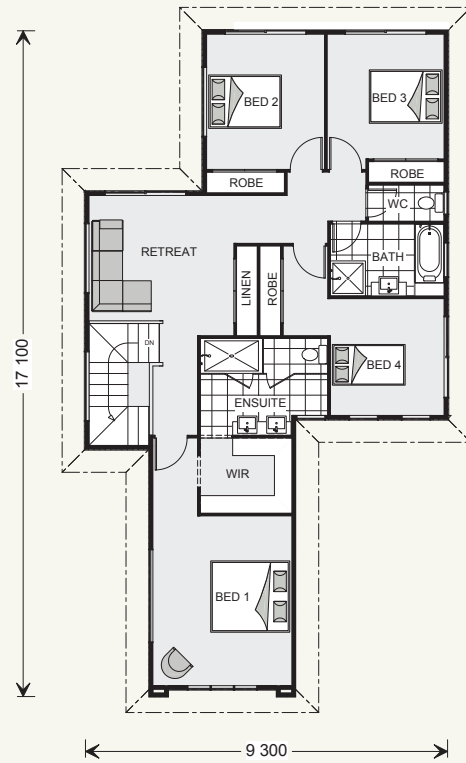
Images may depict fixtures, finishes and features not supplied by G.J. Gardner Homes. These items include planter boxes, retaining walls, water features, pergolas, screens and decorative landscaping items such as fencing and outdoor kitchens and barbecues.

## Avalon Bay 283.

4  2.5  2 

### FEATURES

- + Upper floor retreat
- + Butler's pantry
- + Lifestyle alfresco
- + Spacious ensuite



### SPECIFICATIONS

#### Floor Area-Ground

**Living:** 115.8 sqm

**Garage:** 37.5 sqm

**Alfresco:** 17.5 sqm

**Porch:** 3.0 sqm

**Total:** 173.8 sqm

**Width:** 11.480 m

**Length:** 20.400 m

#### Floor Area-Upper

**Living:** 108.8 sqm

**Total:** 108.8 sqm

#### Total Area

**Total:** 282.6 sqm

### NOTES

---



---



---



---

---

**Locals always  
at hand.**

Designing and building your ideal home is an exciting experience, and when you partner with professional and established builders – G.J. Gardner Homes, the journey will be fulfilling and rewarding.



Internal photographs are from different G.J. Gardner Homes to those featured in this brochure.

Contact us on **132 789**  
or visit [gjjardner.com.au](http://gjjardner.com.au)

**G.J. Gardner.** **HOMES**