

House & Land Package.



House and land package from \$474,900*

Address: 18 Menzies Terrace, Mildura

Inclusions:

- + Carpet & Vinyl Strip to Home
- + Ducted & Zoned Rev Cycle Air Con
- + 900mm Cooktop + Dishwasher
- + Crossover, Driveway & Paths
- + Gates & Fencing
- +

Hawkesbury 210 - Element Series

4  2  2 

Give us a call or drop in for a chat today.

Office:

Mildura

54 Lime Ave, Mildura Vic 3500

Estilo Pty Ltd, CDB-U 49930.

Dennis McPhee

Custom Home Consultant

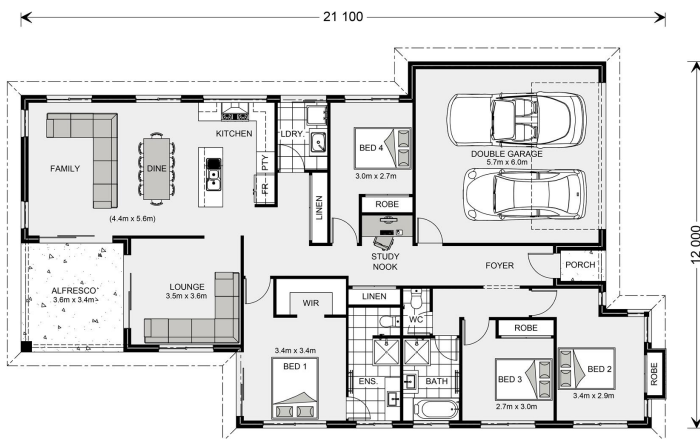
Call: 0427 237 860

Email: dennis.mcphee@gjgardner.com.au

Call: 03 5023 1199

Email: mildura@gjgardner.com.au

Or visit gjgardner.com.au



*Images and photographs may depict fixtures, finishes and features either not supplied by G.J. Gardner Homes or not included in any price stated. These items include furniture, swimming pools, pool decks, fences, landscaping - including planter boxes, retaining walls, water features, pergolas, screens and decorative landscaping items such as fencing and outdoor kitchens and barbeques. For detailed home pricing, please talk to a new homes consultant.

Welcome **home.**

G.J. Gardner. **HOMES**