

# Oceanside 176.



## **Allow yourself to imagine the lifestyle you've always wanted, in the home you deserve!**

A narrow home site doesn't mean you should have to compromise on space or style. The Oceanside 176 has been carefully designed to offer everything a busy family needs, all on a 10 metre wide site – including two separate living areas, three bedrooms and a double garage.

On one side of the home are the bedrooms, including the spacious master with walk-in robe and ensuite. The other side is reserved for family living, with a separate lounge or media room near the front entry and the open-plan kitchen, dining and family living space flowing toward the rear. The double garage is positioned at the back of the home for rear-lane entry.

The Oceanside offers individually crafted facades that will inspire you by providing a choice of homes that reflect your personal lifestyle and preferences.

Welcome **home.**

**G.J. Gardner.** HOMES

## Oceanside 176 facade options.

G.J. Gardner's tailored facades give you the opportunity to personalise your home.

With Executive, Classic, Resort & Urban facades to choose from, you can bring your home to life, making it as individual as you are!

CLASSIC



EXECUTIVE



URBAN



Images may depict fixtures, finishes and features not supplied by G.J. Gardner Homes. These items include planter boxes, retaining walls, water features, pergolas, screens and decorative landscaping items such as fencing and outdoor kitchens and barbecues.

## Oceanside 176.



### FEATURES

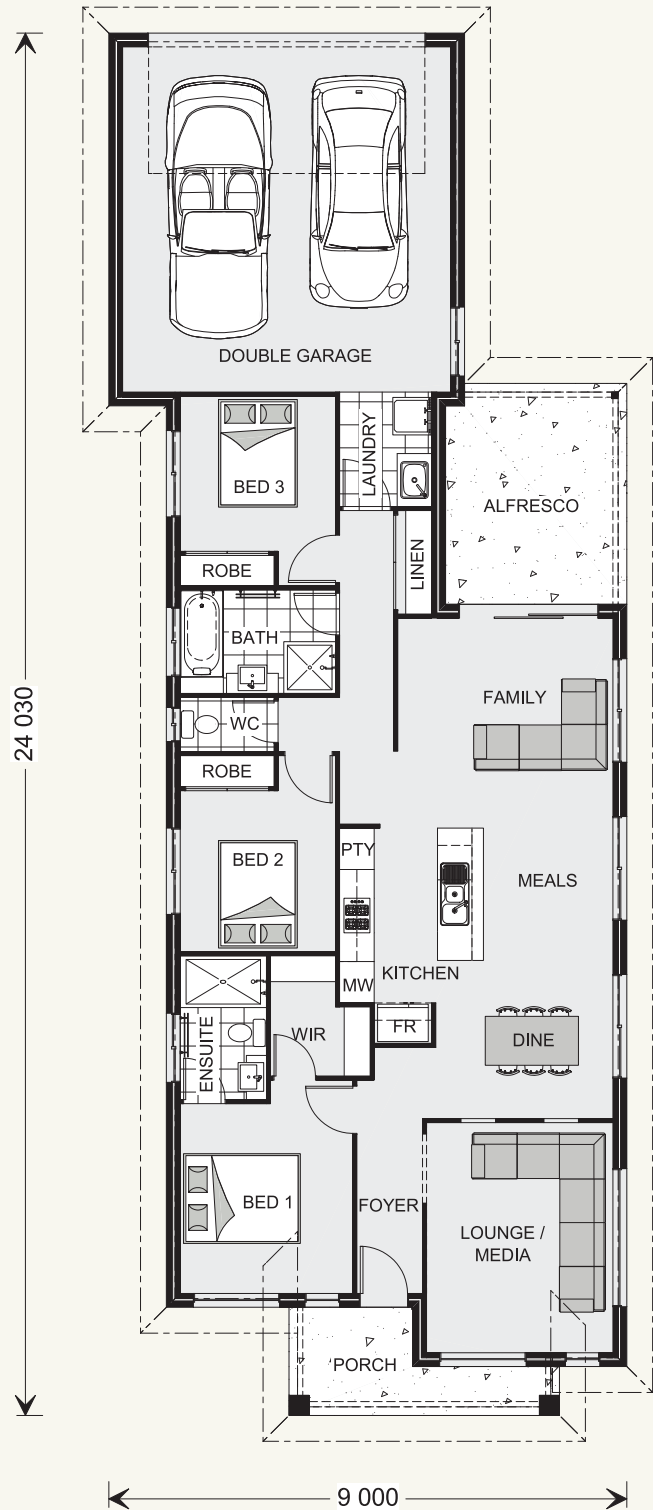
- + Open-plan living space consisting of well-appointed kitchen, dining and alfresco areas
- + Master bedroom with walk-in robe and ensuite
- + Double garage at rear of house for rear-lane entry
- + Designed to fit on 10 metre wide sites

### SPECIFICATIONS

<b>Living:</b>	119.5 m <sup>2</sup>
<b>Garage:</b>	38.8 m <sup>2</sup>
<b>Alfresco:</b>	12.0 m <sup>2</sup>
<b>Porch:</b>	6.2 m <sup>2</sup>
<b>Total:</b>	176.5 m <sup>2</sup>

### TOTAL AREA

<b>Width:</b>	9.00 m
<b>Length:</b>	24.03 m



### NOTES

---

---

---

---

---

**Locals always  
at hand.**

Designing and building your ideal home is an exciting experience, and when you partner with professional and established builders – G.J. Gardner Homes, the journey will be fulfilling and rewarding.



Internal photographs are from different G.J. Gardner Homes to those featured in this brochure.

Contact us on **132 789**  
or visit **[gjgardner.com.au](http://gjgardner.com.au)**