

# Bridgewater.



## **Allow yourself to imagine the lifestyle you've always wanted, in the home you deserve!**

Are you looking for a home in harmony with the needs of today yet flexible enough to still be perfect in years to come?

The Bridgewater Design range, exclusive to G.J. Gardner Homes, features a superb blend of modern architectural interiors, quality fittings and inclusions and stylish outdoor entertaining. This is a home for the discerning buyer who wants clever design in tune with the needs of contemporary living. With its effortless connections throughout the home, here you can embrace both family together time and easily find private space for relaxation.

Bridgewater Design equals just two words: innovative and inspiring.

The Bridgewater Designs offer individually crafted facades that will inspire you by providing a choice of homes that reflect your personal lifestyle and preferences.

Contact us on **132 789**  
or visit [gjjardner.com.au](http://gjjardner.com.au)

Welcome **home.**

**G.J. Gardner.** HOMES

## **Bridgewater facade options.**

G.J. Gardner's tailored facades give you the opportunity to personalise your home. With Executive, Classic, Resort, Urban, Traditional and Beach facades to choose from, you can bring your home to life, making it as individual as you are!



Images may depict fixtures, finishes and features not supplied by G.J. Gardner Homes. These items include planter boxes, retaining walls, water features, pergolas, screens and decorative landscaping items such as fencing and outdoor kitchens and barbecues.

CLASSIC



**With you every  
step of the way.**

Partner with G.J. Gardner Homes, and together we'll transform your ideas into reality. Let us guide you through the entire home building process. With our local knowledge and insights coupled with access to your area's local architects, tradesmen and homebuilders, you know you'll be completely looked after by G.J. Gardner Homes.

URBAN



No two houses ever need to be the same. We have 24 flexible home designs to choose from, so your fully customised home reflects your family's unique lifestyle and budget.

BEACH

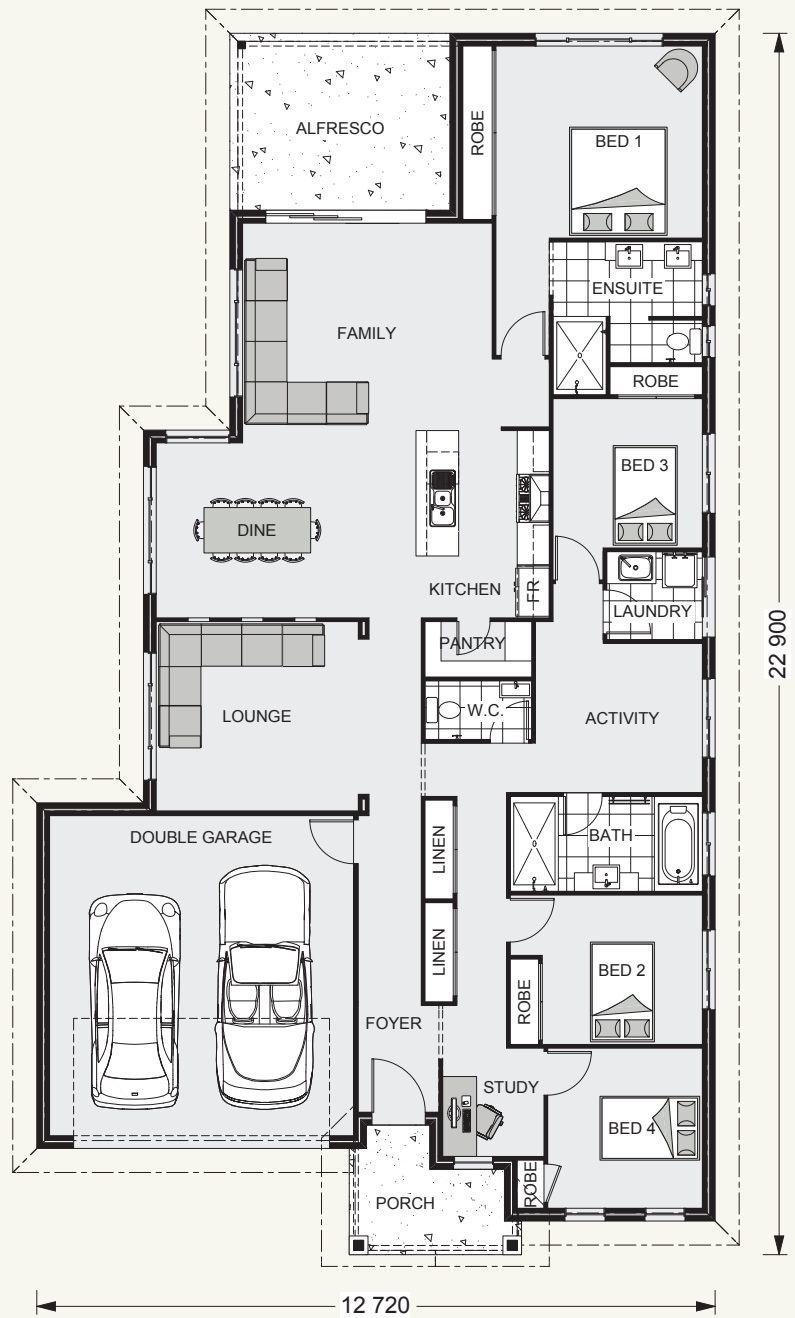


## Bridgewater 236.

4  2.5  2 

### FEATURES

- + 4 Living zones
- + Large ensuite
- + Study
- + Alfresco living



### SPECIFICATIONS

**Living:** 179.0 sqm  
**Garage:** 37.7 sqm  
**Alfresco:** 13.7 sqm  
**Porch:** 6.0 sqm  
**Total:** 236.4 sqm

### TOTAL AREA

**Width:** 12.720 m  
**Length:** 22.900 m

### NOTES

---

---

---

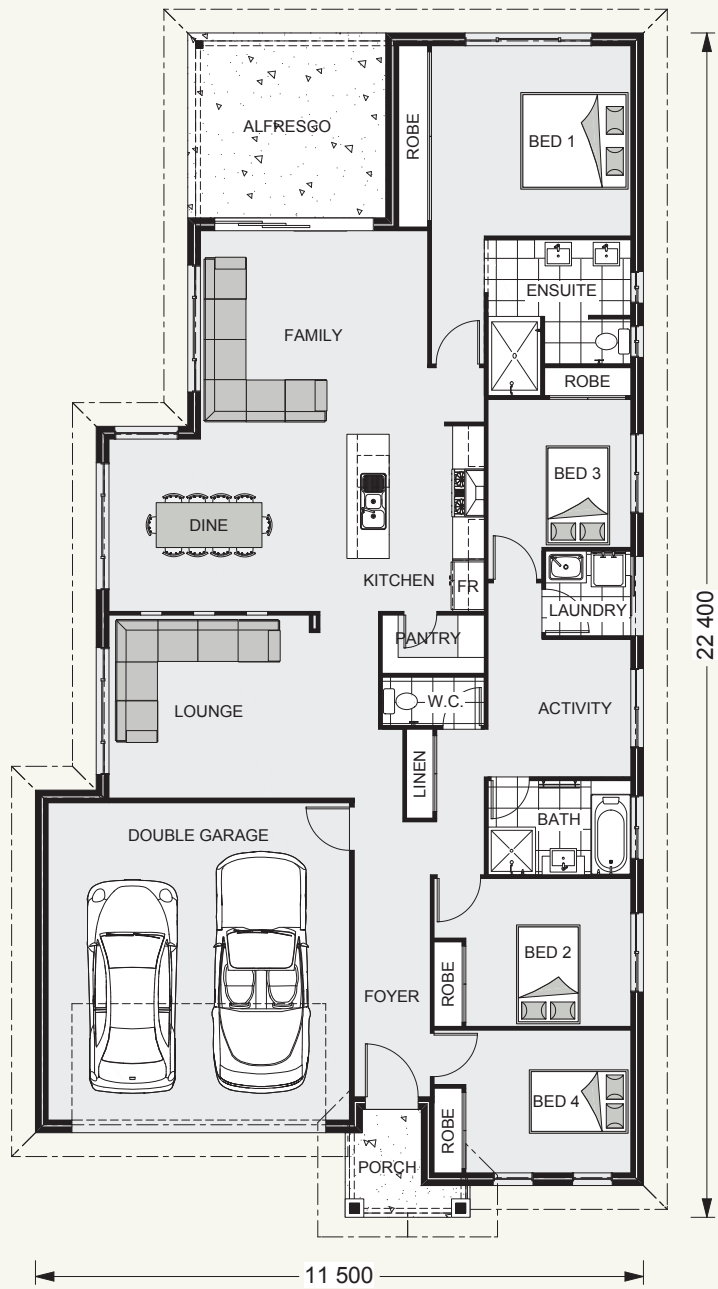
---

## Bridgewater 217.



### FEATURES

- + Alfresco living
- + Lounge & family room
- + Activity room
- + Ensuite



### SPECIFICATIONS

- Living:** 163.1 sqm
- Garage:** 37.4 sqm
- Alfresco:** 13.1 sqm
- Porch:** 3.3 sqm
- Total:** 216.9 sqm

### TOTAL AREA

- Width:** 11.500 m
- Length:** 22.400 m

The facades shown on this brochure are not representations of this floor plan.

### NOTES

---

---

---

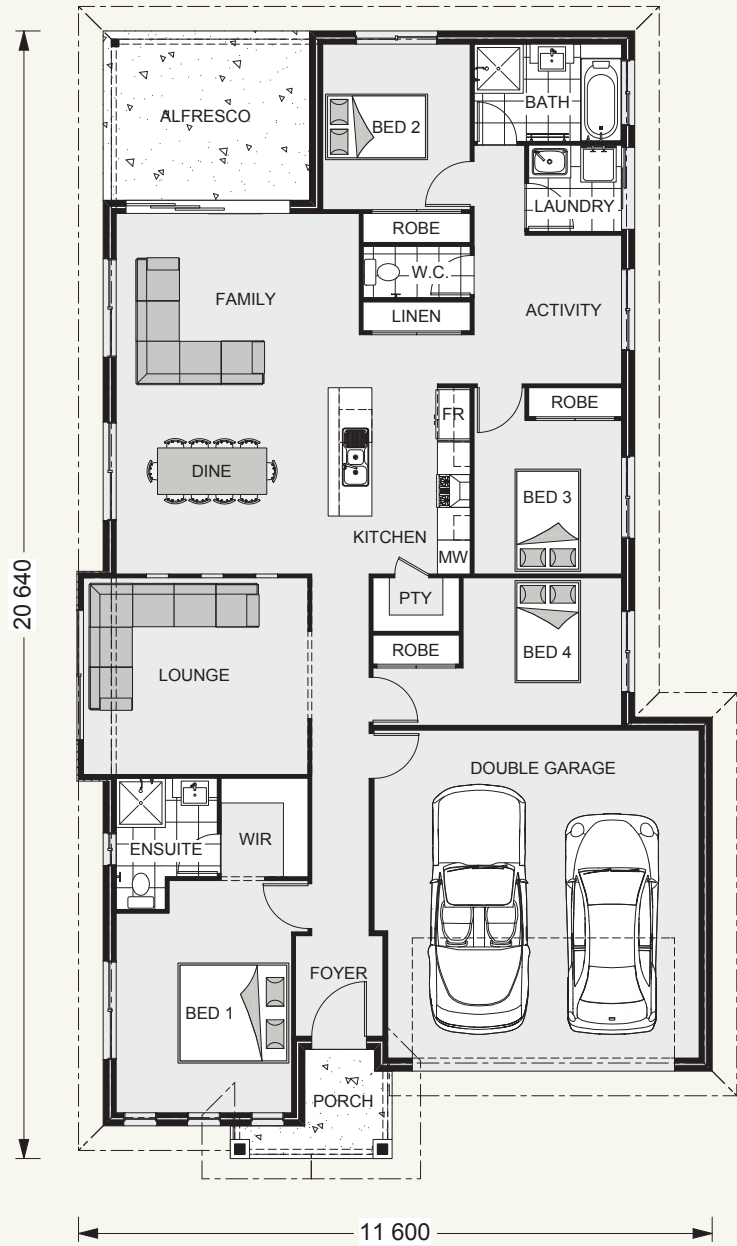
---

## Bridgewater 203.



### FEATURES

- + Open plan living
- + Activity room
- + Ensuite
- + Lounge & family room



The facades shown on this brochure are not representations of this floor plan.

### SPECIFICATIONS

- Living:** 149.2 sqm
- Garage:** 38.4 sqm
- Alfresco:** 11.7 sqm
- Porch:** 3.9 sqm
- Total:** 203.2 sqm

### TOTAL AREA

- Width:** 11.600 m
- Length:** 20.640 m

### NOTES

---



---



---



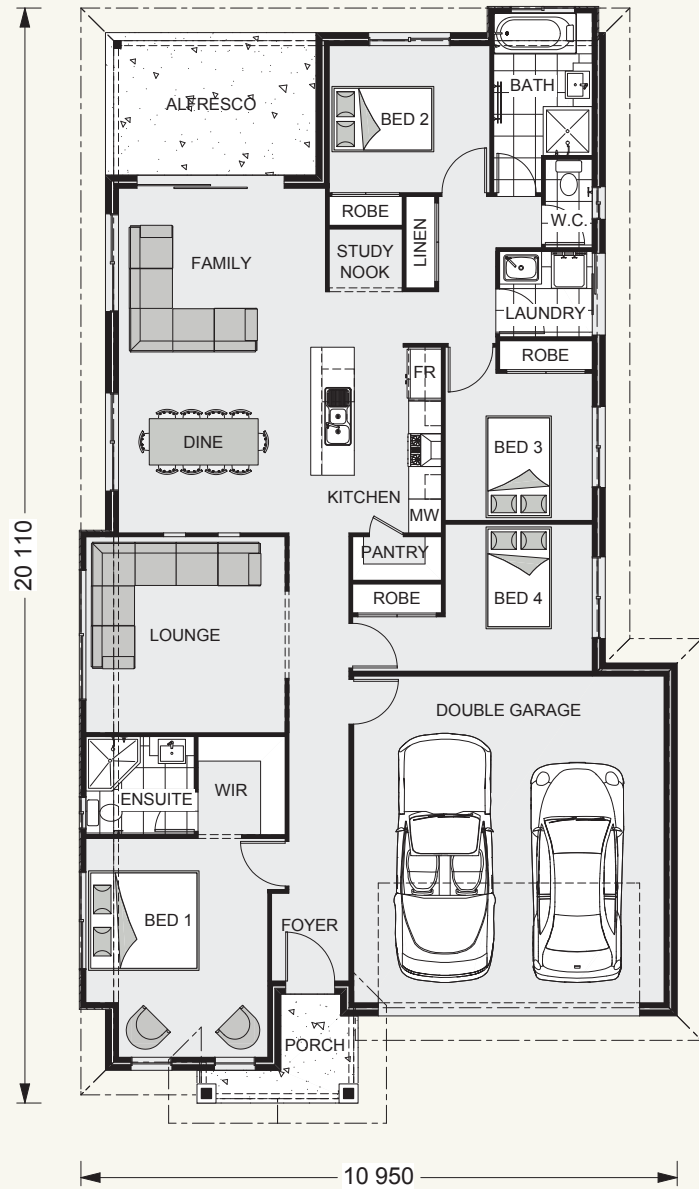
---

## Bridgewater 186.



### FEATURES

- + Study nook
- + Ensuite
- + Alfresco living
- + Lounge & family room



### SPECIFICATIONS

- Living:** 134.4 sqm
- Garage:** 37.5 sqm
- Alfresco:** 10.1 sqm
- Porch:** 3.6 sqm
- Total:** 185.6 sqm

### TOTAL AREA

- Width:** 10.950 m
- Length:** 20.110 m

The facades shown on this brochure are not representations of this floor plan.

### NOTES

---

---

---

---

---

**Locals always  
at hand.**

Designing and building your ideal home is an exciting experience, and when you partner with professional and established builders – G.J. Gardner Homes, the journey will be fulfilling and rewarding.



Internal photographs are from different G.J. Gardner Homes to those featured in this brochure.

Contact us on **132 789**  
or visit [gjjardner.com.au](http://gjjardner.com.au)

**G.J. Gardner.** **HOMES**