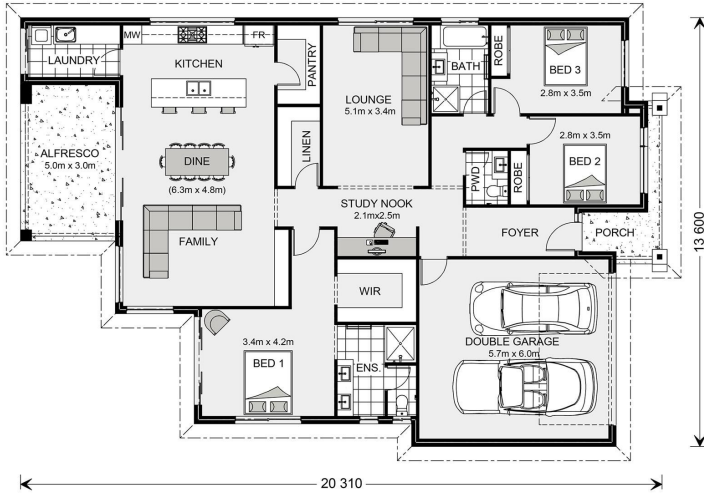


House and land package from \$645,999*

Address: 212 Prembrey Circuit, Cowes

Inclusions:

- + Soil Test & Site Information
- + Concrete Driveway allowance 40m
- + Floor Coverings
- + Split System Heating & Cooling
- + Window and Sliding Door Flyscreens
- + Dishwasher



*Images and photographs may depict fixtures, finishes and features either not supplied by G.J. Gardner Homes or not included in any price stated. These items include furniture, swimming pools, pool decks, fences, landscaping - including planter boxes, retaining walls, water features, pergolas, screens and decorative landscaping items such as fencing and outdoor kitchens and barbecues. For detailed home pricing, please talk to a new homes consultant.

Newport 230 - Element Series

3 2 2

Give us a call or drop in for a chat today.

Office:

Bass Coast - Phillip Island
1/219 Settlement Rd, Cowes Vic 3922
Urban Rescue Pty Ltd, CDB-U 48925.

Robyn Gordon

New Home Consultant

Call: 0437669789

Email: robyn.gordon@gjgardner.com.au

Call: 03 5952 2150

Email: basscoast@gjgardner.com.au

Or visit gjgardner.com.au

Welcome **home.**

G.J. Gardner. **HOMES**