

# House & Land Package.

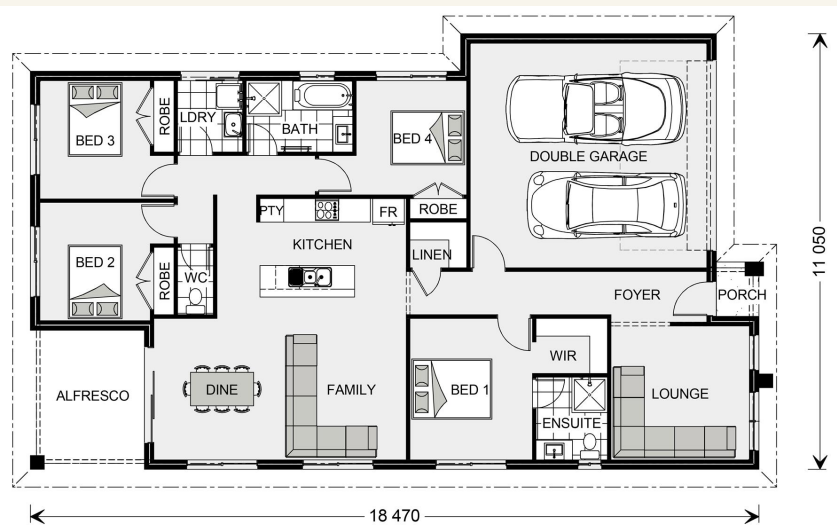


## House and land package from \$393,251\*

Address: Lot 855 Revelstoke Way (Winterfield) (416 sqm), Delacombe

### Inclusions:

- + H1 Waffle Pod Slab Included
- + 600mm Westinghouse Appliances
- + 2440mm ceiling heights throughout
- + Flick Mixer Tapware throughout
- + Carpet & Vinyl Planking throughout
- + Concrete Driveway & Crossover included



\*Images and photographs may depict fixtures, finishes and features either not supplied by G.J. Gardner Homes or not included in any price stated. These items include furniture, swimming pools, pool decks, fences, landscaping - including planter boxes, retaining walls, water features, pergolas, screens and decorative landscaping items such as fencing and outdoor kitchens and barbecues. For detailed home pricing, please talk to a new homes consultant.

## Brookfield 187 - Metro Series

4 2 2

**Give us a call or drop in for a chat today.**

### Office:

Ballarat

1/1021 Sturt St, Ballarat Vic 3350

Ballarat Regional Developments Pty Ltd CDB-U  
50435

David Hocking

Sales Consultant

Call: 0413 568 625

Email: david.hocking@gjgardner.com.au

Call: 03 5334 4099

Email: ballarat@gjgardner.com.au

Or visit [gjgardner.com.au](http://gjgardner.com.au)

Welcome **home.**

**G.J. Gardner.** **HOMES**