

The Elwood.



Your trusted local.

G.J. Gardner. **HOMES**



Allow yourself to imagine the lifestyle you've always wanted, in the home you deserve!

Are you looking for a spacious home with good separation between family living and entertaining areas? The Elwood is the design for you. This two-storey home is effortlessly divided into two living spaces, with open-plan living and entertaining on the ground floor and five bedrooms upstairs. You'll love the spacious master retreat with stylish ensuite, private balcony, walk-in robe and built-in dresser. A study, covered alfresco and double garage complete the picture.

Images may depict fixtures, finishes and features not supplied by G.J. Gardner Homes. These items include planter boxes, retaining walls, water features, pergolas, screens and decorative landscaping items such as fencing and outdoor kitchens and barbecues.

Features:

- + Five bedrooms, four bathrooms
- + Spacious, open-plan living
- + Separate study and upstairs lounge
- + Covered alfresco

Get in touch today!
Call 132 789 or visit gigardner.com.au

G.J. Gardner. HOMES

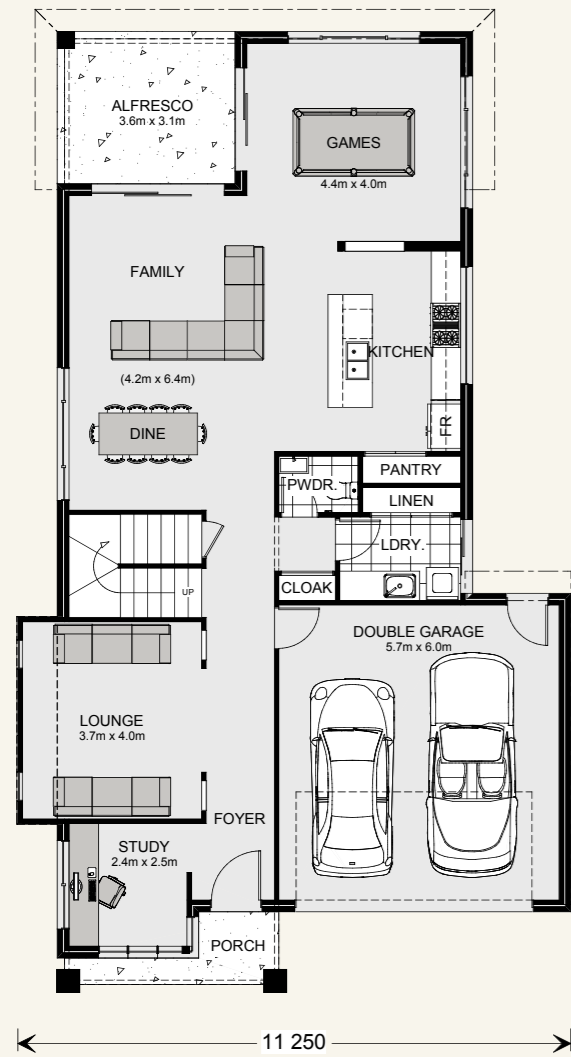
Elwood 303.

4 2.5 2

Floor sizes - Resort Façade

Living:	239.4 m ²	Porch:	3.9 m ²
Garage:	37.6 m ²	Balcony:	5.0 m ²
Alfresco:	11.2 m ²	Void:	6.0 m ²
		Total:	303.1 m²

Suits standard lot width: 12.5m +



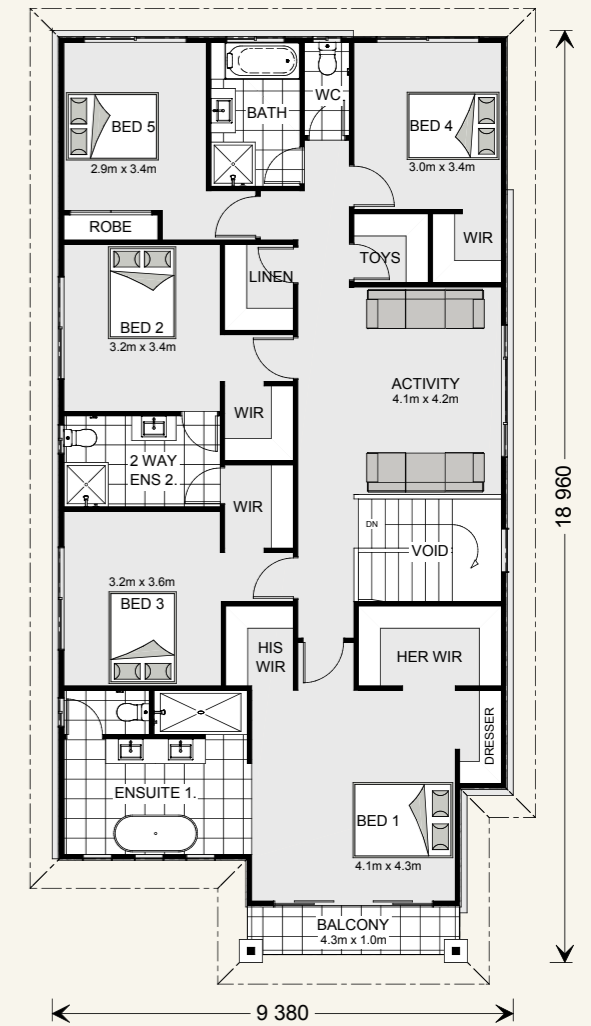
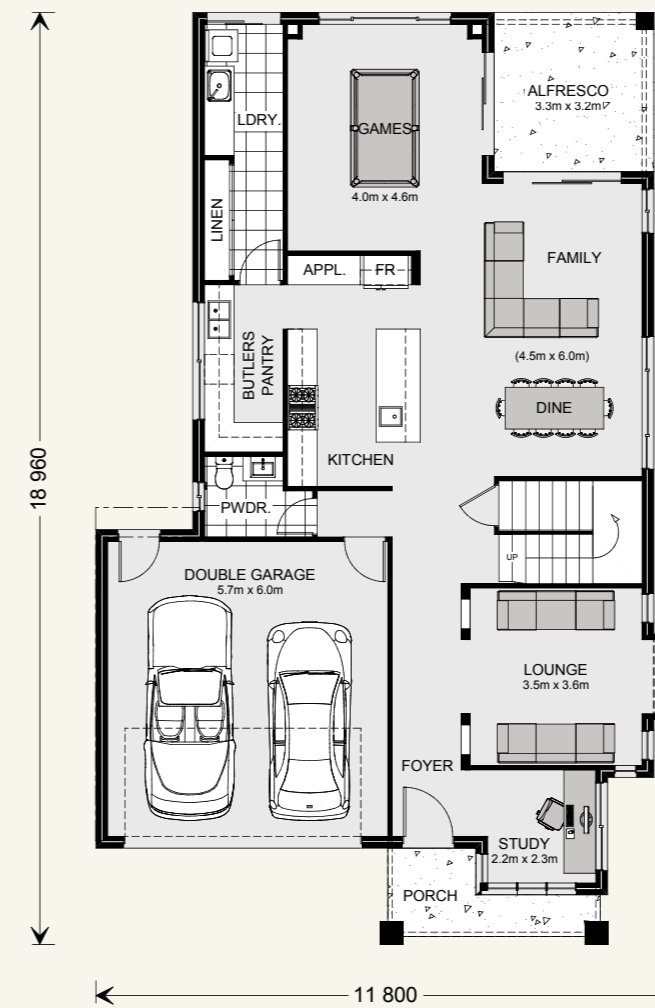
Elwood 344.

5 3.5 2

Floor sizes - Resort Façade

Living:	280.0 m ²	Porch:	5.3 m ²
Garage:	37.5 m ²	Balcony:	4.3 m ²
Alfresco:	10.5 m ²	Void:	6.4 m ²
		Total:	344.0 m²

Suits standard lot width: 14m +



Elwood 353.



Floor sizes - Resort Façade

Living:	287.3 m ²	Porch:	5.7 m ²
Garage:	36.9 m ²	Balcony:	5.1 m ²
Alfresco:	12.4 m ²	Void:	6.0 m ²
Total:	353.4 m²		

Suits standard lot width: 12.5m +

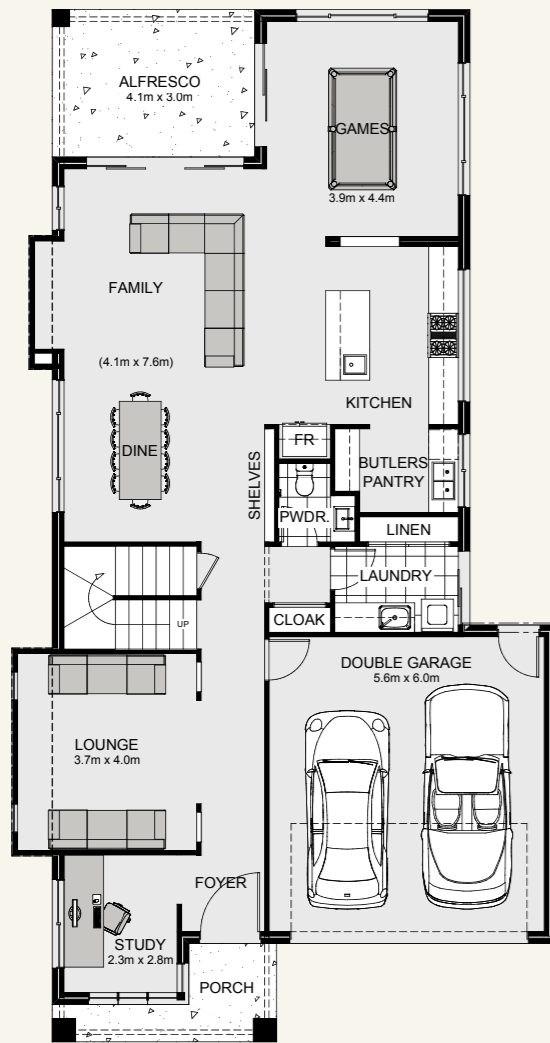
Elwood 406.



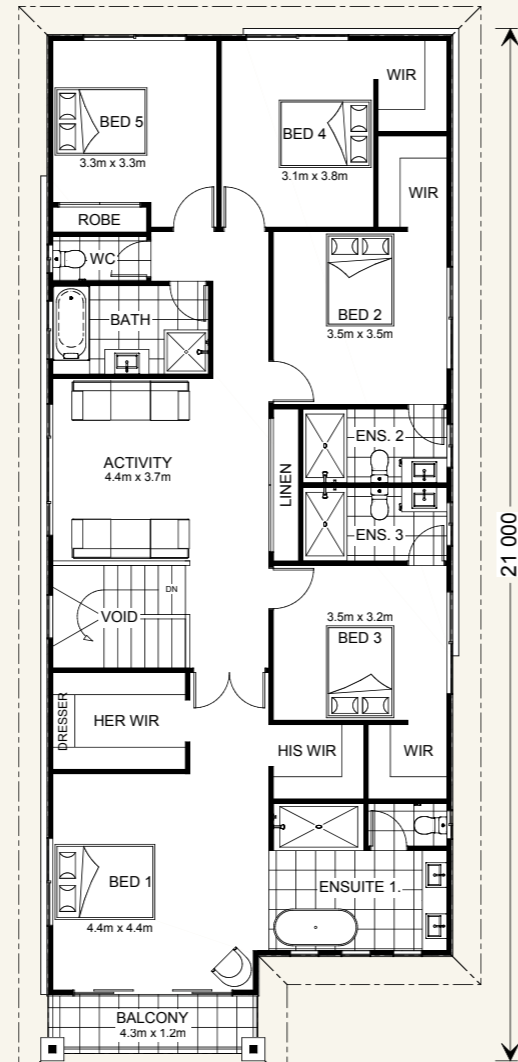
Floor sizes - Metro Façade

Living:	340.0 m ²	Porch:	5.3 m ²
Garage:	38.2 m ²	Balcony:	5.2 m ²
Alfresco:	15.5 m ²	Total:	404.2 m²

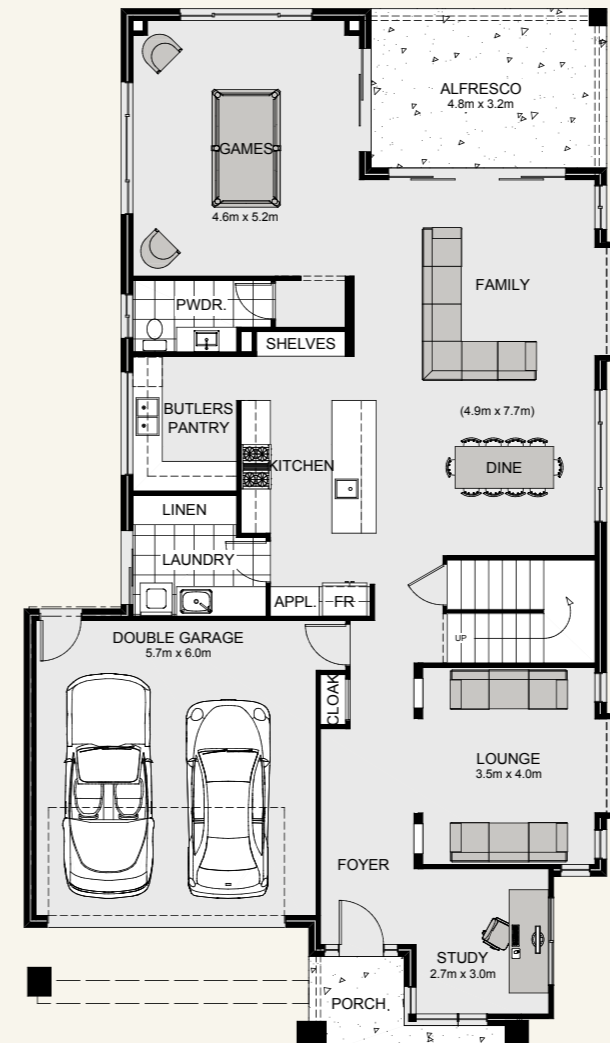
Suits standard lot width: 14m +



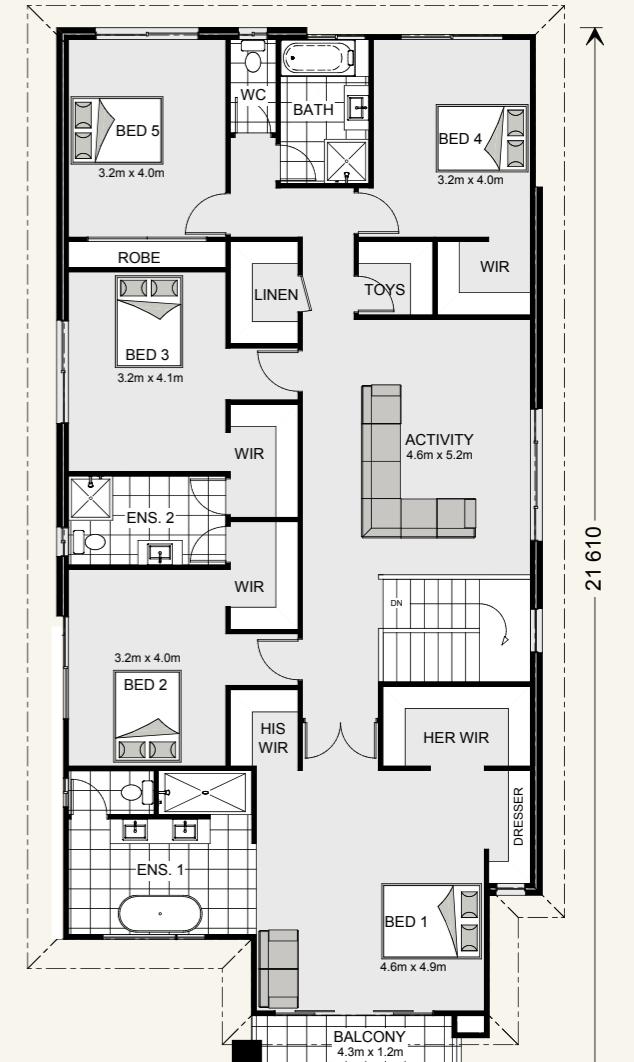
11 050



8 500



12 300



9 880



Your trusted local.

G.J. Gardner. **HOMES**