

The Oceanside.



Your trusted local builder.
Call 132 789 or visit gjgardner.com.au



Locally Owned



Australia's Best National Home Builder on Product Review



Fixed Price Contracts



Facts Up Front



Do you want to enjoy class and comfort, all stylishly combined under one roof?

If so, from the moment you enter one of the beautiful new homes from the Oceanside range you'll know you have discovered just that.

This remarkable new release, exclusive to G.J. Gardner Homes, is designed with today's family in mind. These elegant homes provide multiple private living zones, including a separate media/lounge room, ensuring plenty of space for everyone.




Stylish interiors and flowing open plan areas lead seamlessly from indoors to outdoors, where you can relax, entertain and enjoy the private alfresco and a generous family area. Spacious and stylish, Oceanside Designs embody the best of contemporary living.



Key Features:

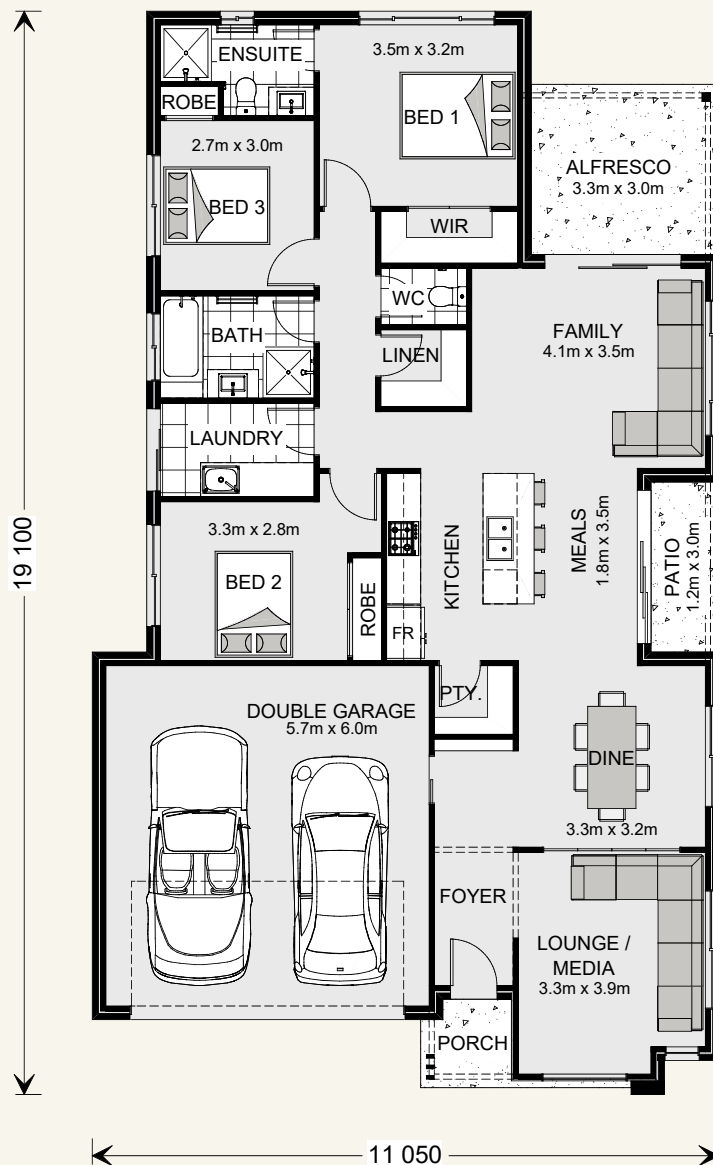
- + Modern kitchen with island bench and walk-in pantry centred in the main living space provides an ideal place for all those long lunches and evenings entertaining.
- + Open plan family, meals and dining room which flows into the side patio and back alfresco, seamlessly extends the space and opens the home to light and breeze.
- + Unwind in the private master suite positioned to the rear, with stylish and open plan ensuite, his and hers vanities and generous walk-in robe.
- + Fall in love with the space offered, catering to both individual and family requirements with 3 large living zones, 4 bedrooms and 2.5 bathrooms.

Oceanside 187.




3  2  2 
 Suits standard lot width: 12.5m +

Floor sizes - Resort Façade

Living:	133.7 m ²	Porch:	2.7 m ²
Garage:	37.4 m ²	Patio:	3.6 m ²
Alfresco:	9.9 m ²	Total:	187.3 m²

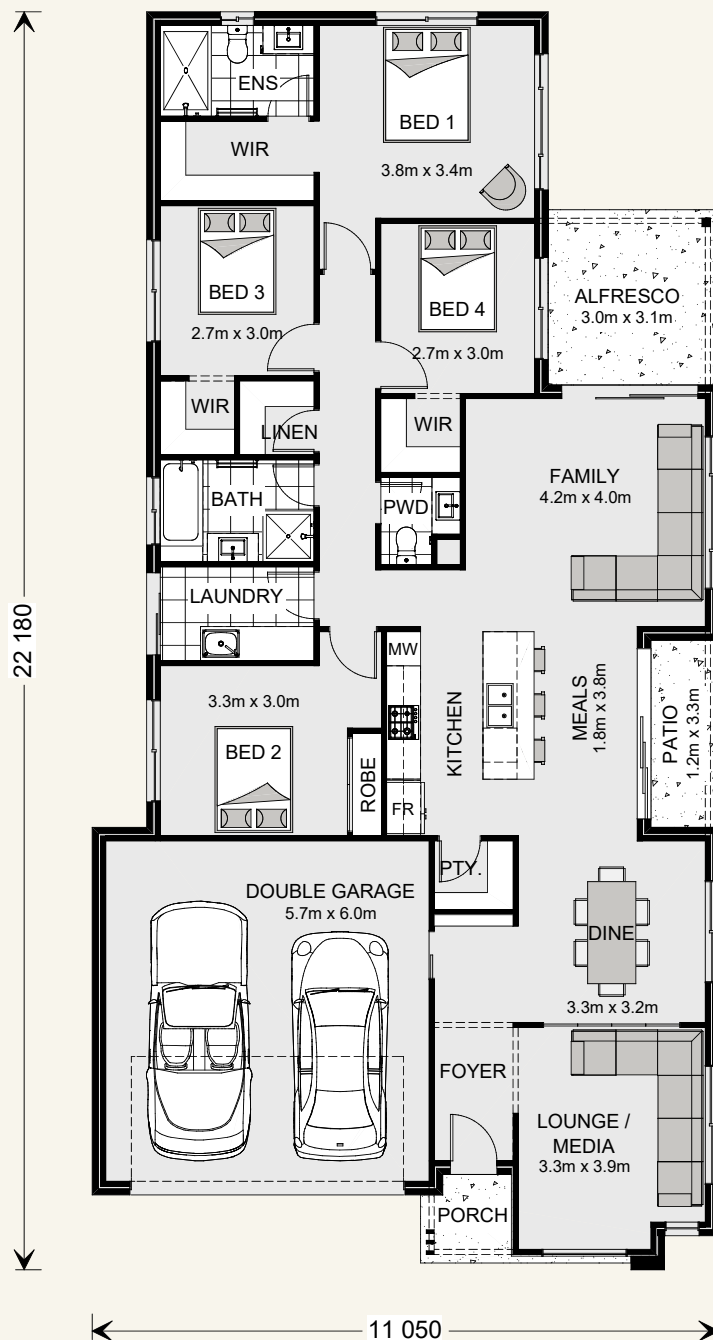


Oceanside 212.




4  2.5  2 
 Suits standard lot width: 12.5m +

Floor sizes - Resort Façade

Living:	159.2 m ²	Porch:	4.3 m ²
Garage:	37.4 m ²	Patio:	4.0 m ²
Alfresco:	9.3 m ²	Total:	214.2 m²



Oceanside 230.

4  2.5  2 
 Suits standard lot width: 12.5m +

Floor sizes - Resort Façade

Living:	173.1 m ²	Porch:	3.1 m ²
Garage:	37.4 m ²	Patio:	4.0 m ²
Alfresco:	12.4 m ²	Total:	230.0 m²



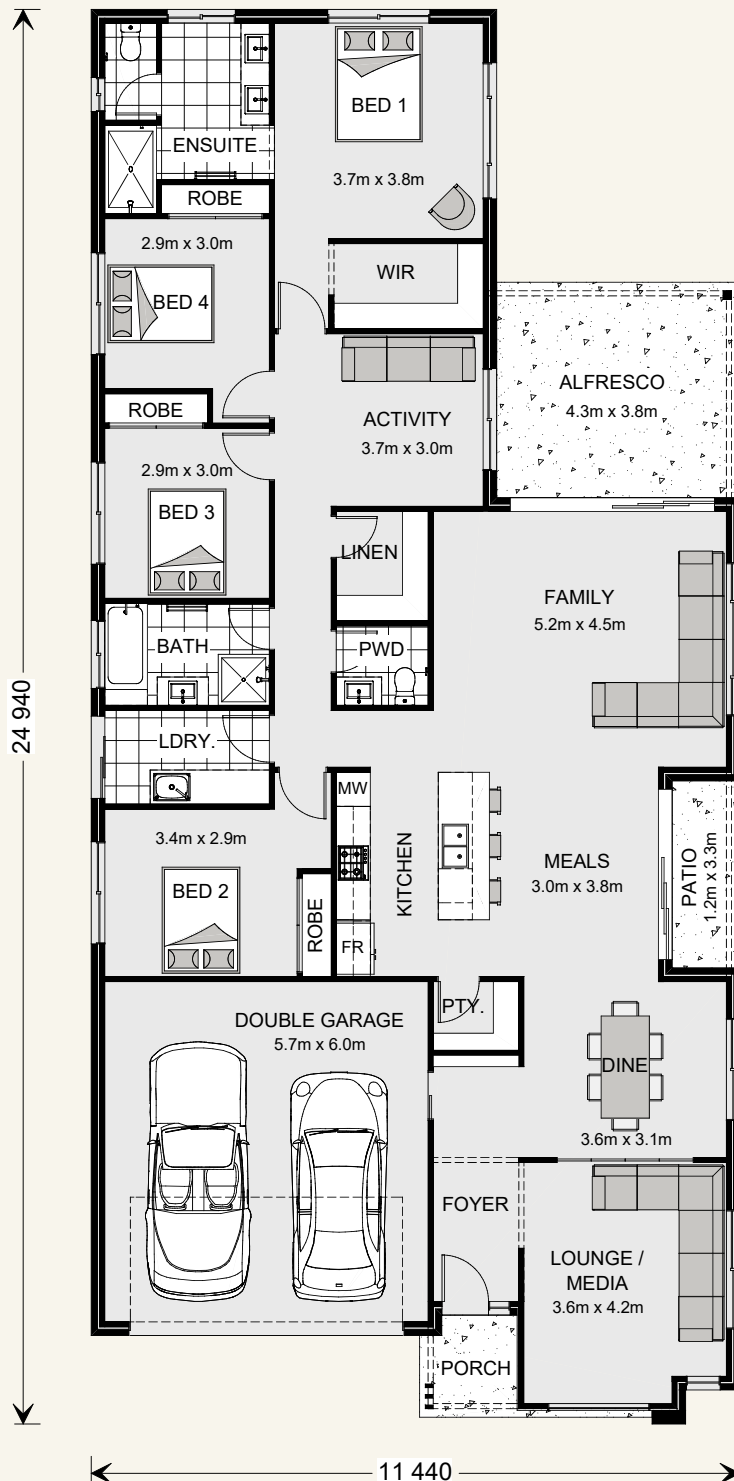
Oceanside 255.



Suits standard lot width: 14m +

Floor sizes - Resort Façade

Living:	193.7 m ²	Porch:	3.4 m ²
Garage:	37.2 m ²	Patio:	4.0 m ²
Alfresco:	16.3 m ²	Total:	254.6 m²



Get in touch with an award-winning local builder today!

 132 789

 gjgardner.com.au



— WINNER —

**Australia's Best
National Home Builder
2016 and 2017**

PRODUCT  REVIEW
.COM.AU



*Based upon Australia Major Builder reviews received on productreview.com.au from 1 January 2016 – 30 November 2017. Images may depict fixtures, finishes and features not supplied by G.J. Gardner Homes. These items include planter boxes, retaining walls, water features, pergolas, screens and decorative landscaping items such as fencing and outdoor kitchens and barbecues.

Get in touch today!

Call 132 789 or visit gjgardner.com.au

G.J. Gardner. HOMES