

# House & Land Package.



House and land package from \$647,897\*

Address: 3 Smith Street, Daylesford

Inclusions:

- + H2 Waffle Pod Slab Included
- + 600mm Westinghouse Appliances
- + 2440mm ceiling heights throughout
- + Concrete driveway and crossover
- + Carpet & Tiles throughout
- + Dishlex Dishwasher Included

Woodridge 232 - Express Series

4  2  2 

Give us a call or drop in for a chat today.

Office:

Ballarat

1/1021 Sturt St, Ballarat Vic 3350

Ballarat Regional Developments Pty Ltd CDB-U  
50435

David Hocking

Sales Consultant

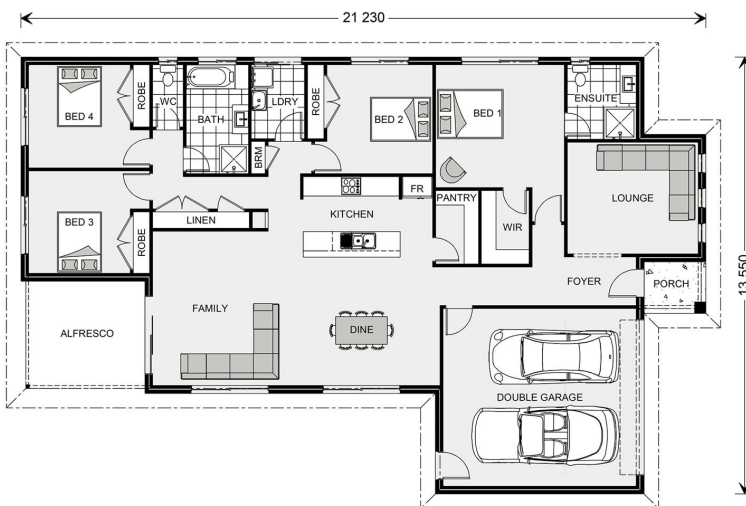
Call: 0413 568 625

Email: david.hocking@gjgardner.com.au

Call: 03 5334 4099

Email: ballarat@gjgardner.com.au

Or visit [gjgardner.com.au](http://gjgardner.com.au)



\*Images and photographs may depict fixtures, finishes and features either not supplied by G.J. Gardner Homes or not included in any price stated. These items include furniture, swimming pools, pool decks, fences, landscaping - including planter boxes, retaining walls, water features, pergolas, screens and decorative landscaping items such as fencing and outdoor kitchens and barbeques. For detailed home pricing, please talk to a new homes consultant.

Welcome **home.**

**G.J. Gardner.** **HOMES**