

# House and land package from \$575,317\*

Address: 1552 Spring Mountain Estate, Greenbank

Inclusions:

- +
- +
- +
- +
- +
- +

## Rochedale 294 - Prestige Series



Give us a call or drop in for a chat today.

**Office:**

Springfield / Ripley

5/21 Technology Dr, Augustine Heights QLD 4300

QBCC: 1073307

**Poonam Sodhi**

New Home Consultant

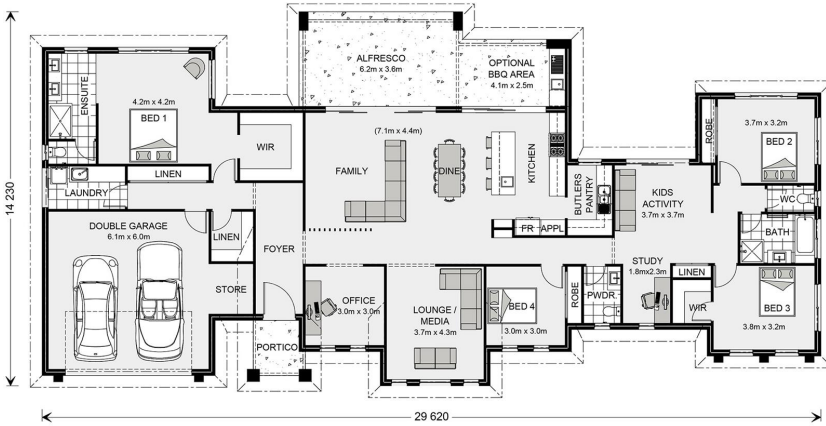
Call: 0407 353 361

Email: [poonam.sodhi@gjgardner.com.au](mailto:poonam.sodhi@gjgardner.com.au)

Call: 07 3470 5666

Email: [springfield@gjgardner.com.au](mailto:springfield@gjgardner.com.au)

Or visit [gjgardner.com.au](http://gjgardner.com.au)



\*Images and photographs may depict fixtures, finishes and features either not supplied by G.J. Gardner Homes or not included in any price stated. These items include furniture, swimming pools, pool decks, fences, landscaping - including planter boxes, retaining walls, water features, pergolas, screens and decorative landscaping items such as fencing and outdoor kitchens and barbecues. For detailed home pricing, please talk to a new homes consultant.

Welcome **home.**

**G.J. Gardner.** HOMES