



House and land package from \$441,727*

Address: 17, 34 Elstead Drive, Strathdale

Inclusions:

- + Resort Facade
- + Carpet & Vinyl Planks
- + Ducted Gas Heating & Evaporative Cooling
- + Blockout Blinds to Bedrooms & Living Areas
- + Concrete Driveway
- + Brick Letterbox

Beachlands 187 - Metro Series



Give us a call or drop in for a chat today.

Office:

Bendigo
 437 Hargreaves Street, Bendigo Victoria 3552
 Bendigo Urban Investments Pty Ltd, CDB-U 58150.

Deb Wilson

New Home Consultant

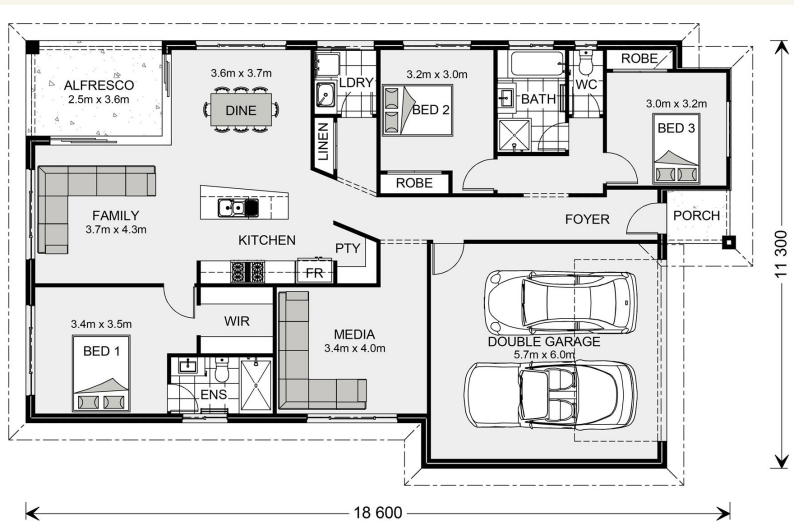
Call: 0407 983 501

Email: deb.wilson@gjgardner.com.au

Call: 03 5442 2300

Email: bendigo@gjgardner.com.au

Or visit gjgardner.com.au



*Images and photographs may depict fixtures, finishes and features either not supplied by G.J. Gardner Homes or not included in any price stated. These items include furniture, swimming pools, pool decks, fences, landscaping - including planter boxes, retaining walls, water features, pergolas, screens and decorative landscaping items such as fencing and outdoor kitchens and barbeques. For detailed home pricing, please talk to a new homes consultant.

Welcome **home.**

G.J. Gardner. HOMES