

The Somerset.



Allow yourself to imagine the lifestyle you've always wanted, in the home you deserve!

This truly impressive home has enough space to accommodate the most vibrant family lifestyle. Built for entertaining, the Somerset features four living zones, including an open-plan kitchen with family and dining areas, a covered alfresco and a huge games room with built-in bar.

The spacious master bedroom has its own private retreat, and there is a guest room with ensuite for visiting relatives. The designated kids' zone comes complete with activity room, study nook and a central main bathroom, while a private office and media room.

The Somerset offers individually crafted façades that will inspire you by providing a choice of homes that reflect your personal lifestyle and preferences.

Get in touch today!

Call 132 789 or visit gjpgardner.com.au

EXECUTIVE



RESORT



MANOR



URBAN



Features:

- + Large family home with four living zones
 - + Five bedrooms, including spacious master retreat
- + Huge games room with built-in bar
 - + Triple garage

Get in touch today!
Call 132 789 or visit gjgardner.com.au

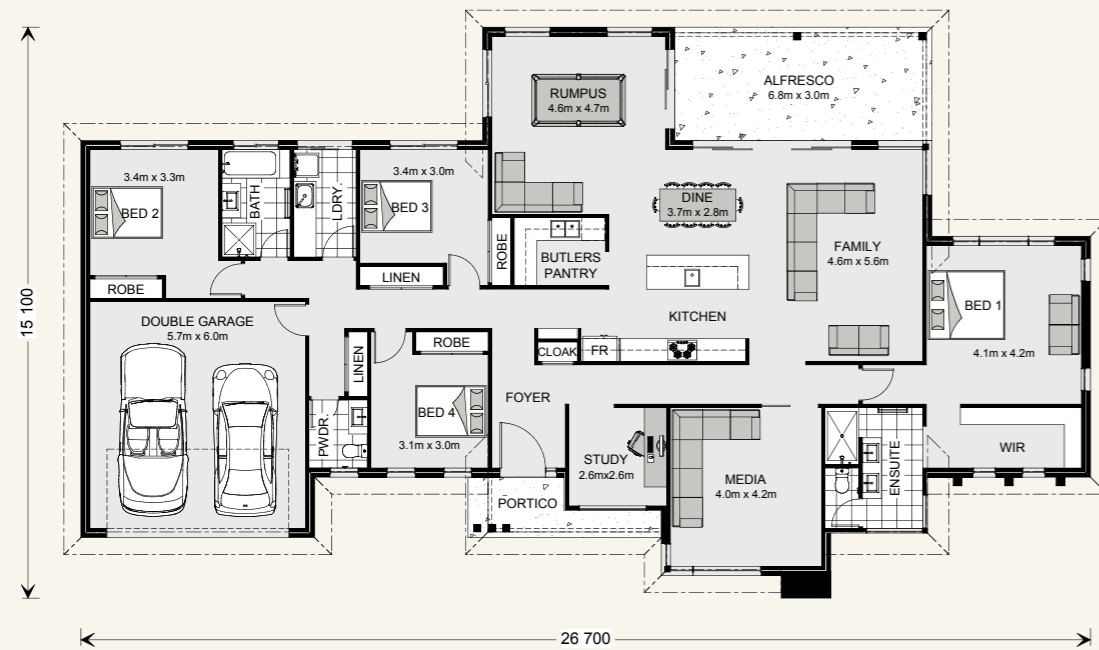
G.J. Gardner. **HOMES**

Somerset 296.



Floor sizes - Resort Façade		Alfresco:	20.4 m ²
Living:	232.3 m ²	Portico:	6.0 m ²
Garage:	37.4 m ²	Total:	296.1 m²

Suits corner & rural sites.

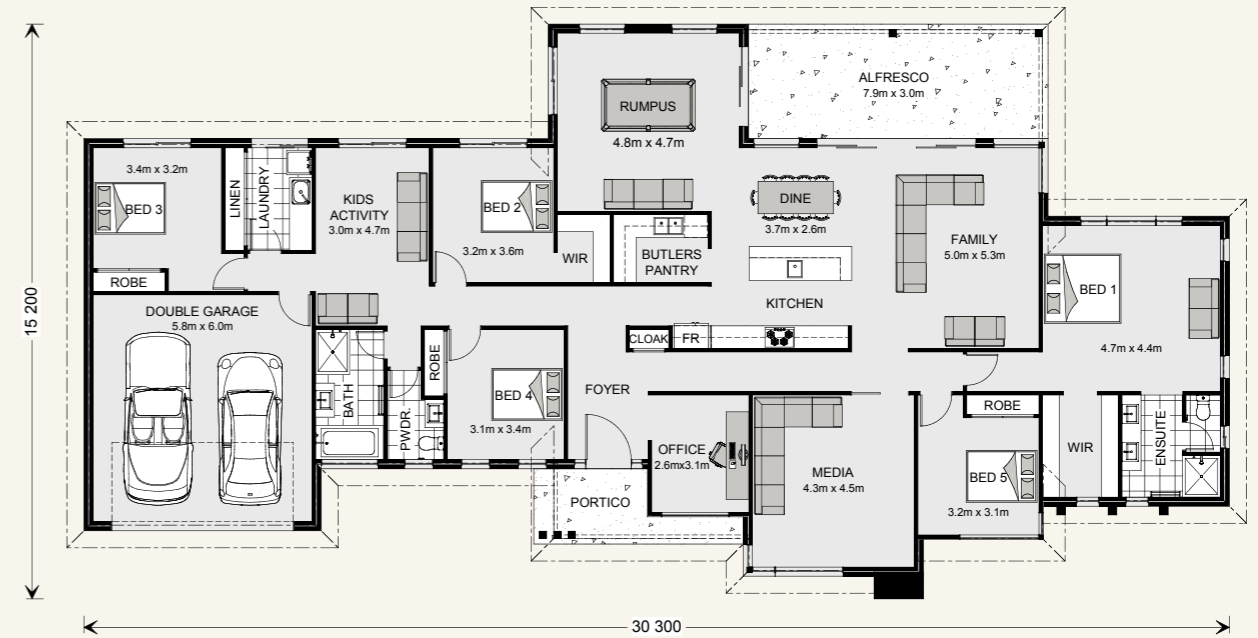


Somerset 340.



Floor sizes - Resort Façade		Alfresco:	24.0 m ²
Living:	270.3 m ²	Portico:	7.9 m ²
Garage:	38.1 m ²	Total:	340.3 m²

Suits corner & rural sites.



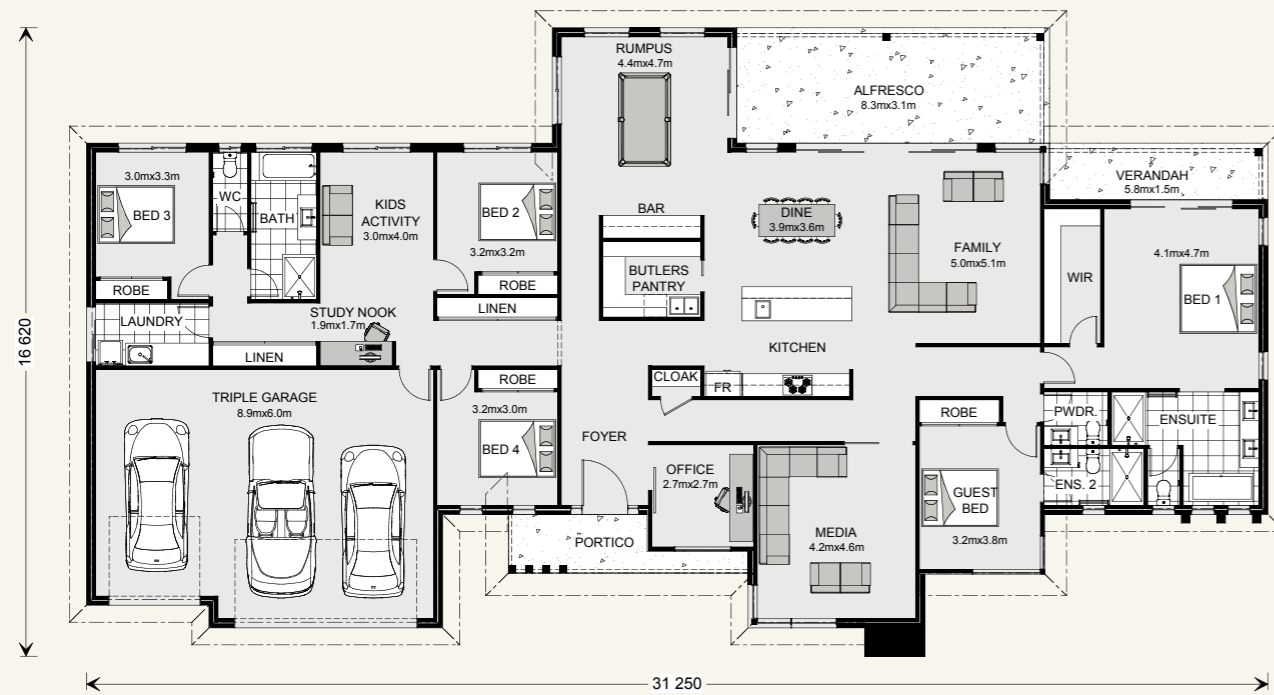
Somerset 400.



Floor sizes - Resort Façade

Living:	299.2 m ²	Portico:	7.3 m ²
Garage:	61.6 m ²	Verandah:	8.7 m ²
Alfresco:	25.2 m ²	Total:	402.0 m²

Suits corner & rural sites.



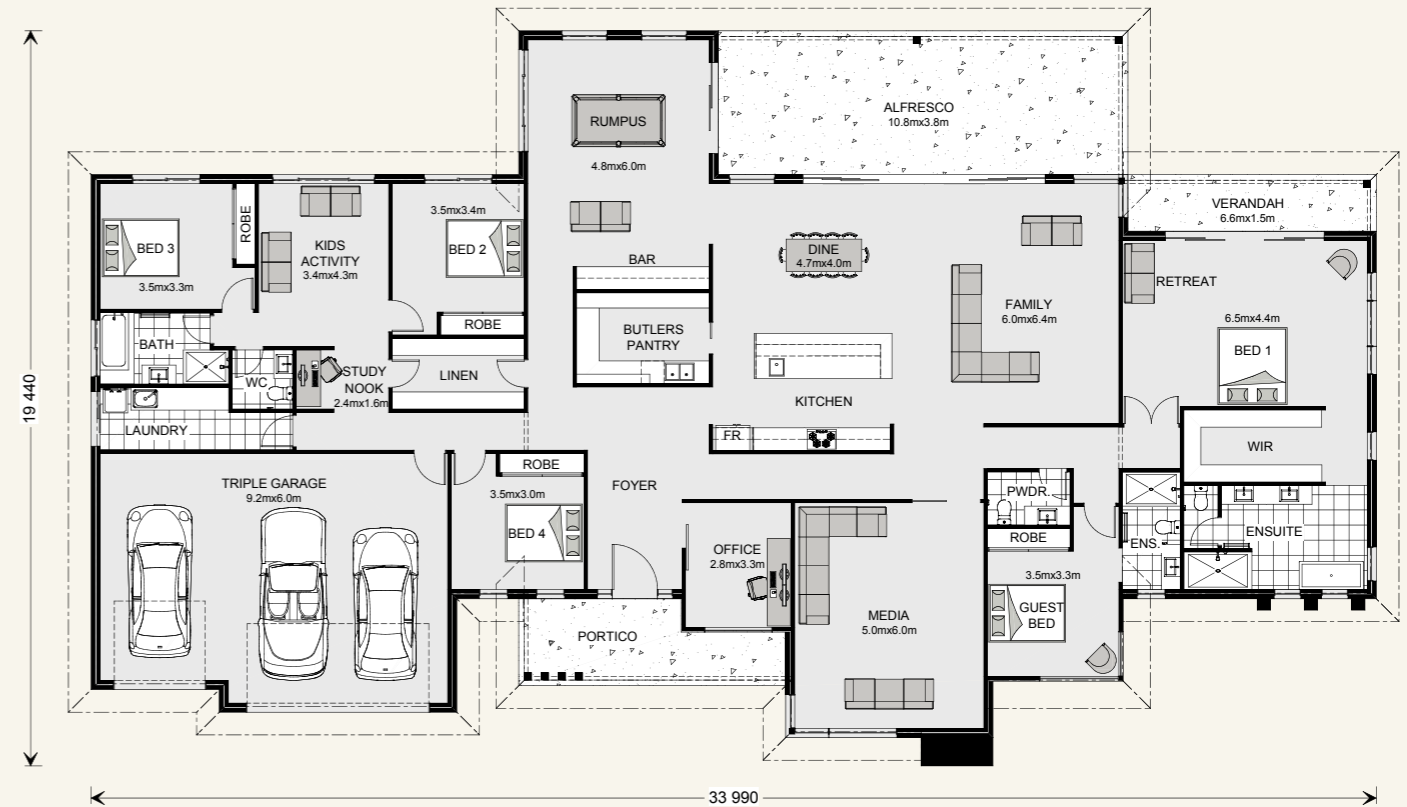
Somerset 513.



Floor sizes - Resort Façade

Living:	385.1 m ²	Portico:	13.9 m ²
Garage:	63.2 m ²	Verandah:	9.9 m ²
Alfresco:	41.2 m ²	Total:	513.3 m²

Suits corner & rural sites.





Images may depict fixtures, finishes and features not supplied by G.J. Gardner Homes. These items include planter boxes, retaining walls, water features, pergolas, screens and decorative landscaping items such as fencing and outdoor kitchens and barbecues.

G.J. Gardner. **HOMES**