



## House and land package from \$446,481\*

Address: 25 Callaway Court, Peterborough

### Inclusions:

- + Facade with cladding to front bedroom, as shown in image
- + Holland block out blinds to all windows and sliding doors
- + Carpet to bedrooms and MPR with tile to remainder of home
- + All electric appliances as no natural gas available in area
- + Braemar split system to open plan area
- + Dishlex dishwasher

## Stonehaven 153 - Express Series

3 2 1

**Give us a call or drop in for a chat today.**

### Office:

Warrnambool  
193a Lava St, Warrnambool VIC 3280  
Almirh Pty Ltd, CDB-U 49472.

Kristy Henriksen

New Home Consultant

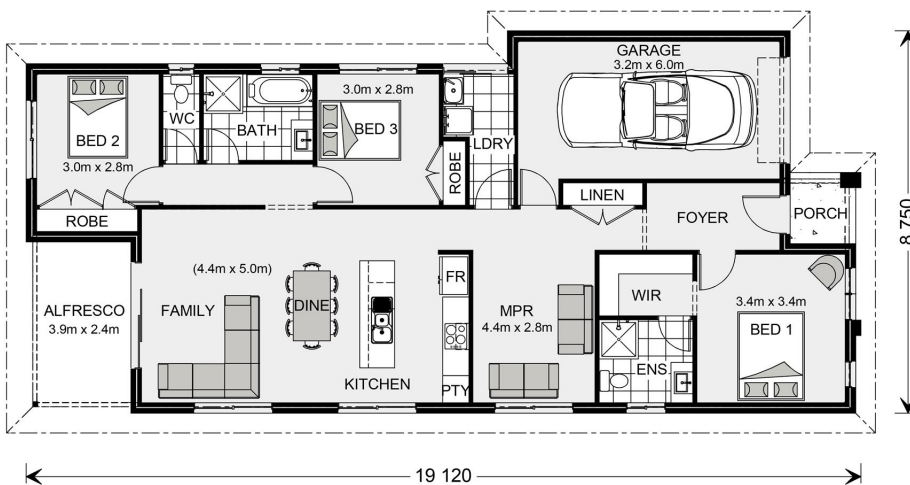
Call: 0419848803

Email: [kristy.henriksen@gjgardner.com.au](mailto:kristy.henriksen@gjgardner.com.au)

Call: 03 5560 5588

Email: [warrnambool@gjgardner.com.au](mailto:warrnambool@gjgardner.com.au)

Or visit [gjgardner.com.au](http://gjgardner.com.au)



\*Images and photographs may depict fixtures, finishes and features either not supplied by G.J. Gardner Homes or not included in any price stated. These items include furniture, swimming pools, pool decks, fences, landscaping - including planter boxes, retaining walls, water features, pergolas, screens and decorative landscaping items such as fencing and outdoor kitchens and barbecues. For detailed home pricing, please talk to a new homes consultant.

Welcome **home.**

**G.J. Gardner.** HOMES