

House & Land Package.



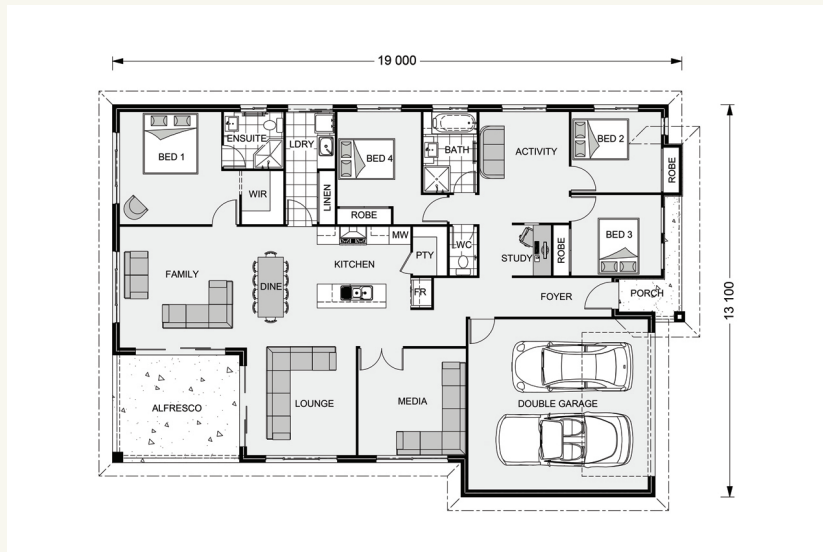
From \$425,700* (incl GST)

Lot 36 - Adare Grove Estate (3,040 m²)

Package includes[^]:

- + Ducted Air Conditioning
- + Smeg Appliance Package
- + Stone Bench Tops
- + Flooring and Lighting
- + Driveway, Paths, Fencing and Landscaping
- + M Type Soil

[^]Please speak to your New Homes Sales Consultants for full list of inclusions.



Iluka 230.



Itemised Floor Area	Area
Internal	172.60
Garage	37.60
Alfresco	15.20
Porch	4.30
Gross	229.70

Drop in for a chat today.

205 Hume Street,
Toowoomba QLD 4350

Contact us.

Call Daniel on 0479 106 835,
email daniel.dalley@gjgardner.com.au or
visit us online at gjgardner.com.au

Terms and conditions *Package price is based on standard home, standard floor plan and standard façade (may be smaller than façade shown). Package may be subject to developer's design review panel, council final approval and G.J. Gardner Homes procedure of purchase. Package price excludes stamp duty on land, legal fees and conveyancing costs (including transfer of title and searches). Prices are inclusive of GST and may change without notice. Package subject to two separate contracts. G.J. Gardner Homes makes no guarantee the lot number advertised will be available at the time of purchase. Photographs may depict fixtures, finishes and features not supplied by G.J. Gardner Homes. Excluded items include but are not limited to landscaping items such as planter boxes, retaining walls, water features, pergolas, screens, driveways and decorative items such as fencing and outdoor kitchens or barbecues. This design and illustration remains the property of G.J. Gardner Homes and may not be reproduced in whole or in part without written consent. For detailed home pricing, please talk to a New Homes Consultant. Qcroft Pty Ltd T/As G.J. Gardner Homes Toowoomba. Builders licence 658677. Created 06/08/2019.