



The Mountain Views.



Artists impressions are representative only. For precise dimensions please refer to a floorplan. Photos may depict fixtures, finishes and features not supplied by G.J. Gardner Homes. These items include planter boxes, retaining walls, water features, pergolas, screens, outdoor kitchens, barbecues and decorative landscaping items such as fencing.

Your trusted local.

G.J. Gardner. HOMES

Your trusted local.

G.J. Gardner. HOMES



CLASSIC



MANOR



EXECUTIVE



URBAN



HAMPTONS



RESORT

Allow yourself to imagine the lifestyle you've always wanted, in the home you deserve!

Spacious and stylish, the Mountain Views range has been carefully tailored to suit rural or corner sites, yet offers with all the convenience of a contemporary family home. Part of the Element Estate Series, the design's slim rectangular shape assists in positioning on sloping sites and encourages minimal impact on the surrounding landscape. It boasts elegant, spatial flow between three living zones, including an open-plan kitchen and dining area with adjoining rumpus room. This zone opens onto a huge covered alfresco and barbecue area, perfect for family dining and entertaining. Two floorplans and a variety of façade options give you the freedom to choose a home that's perfectly tailored to your lifestyle and needs.

Features:

- + Four bedrooms
- + Three bathrooms
- + Three living zones
- + Huge lifestyle alfresco

Get in touch today!
Call 132 789 or visit gigardner.com.au

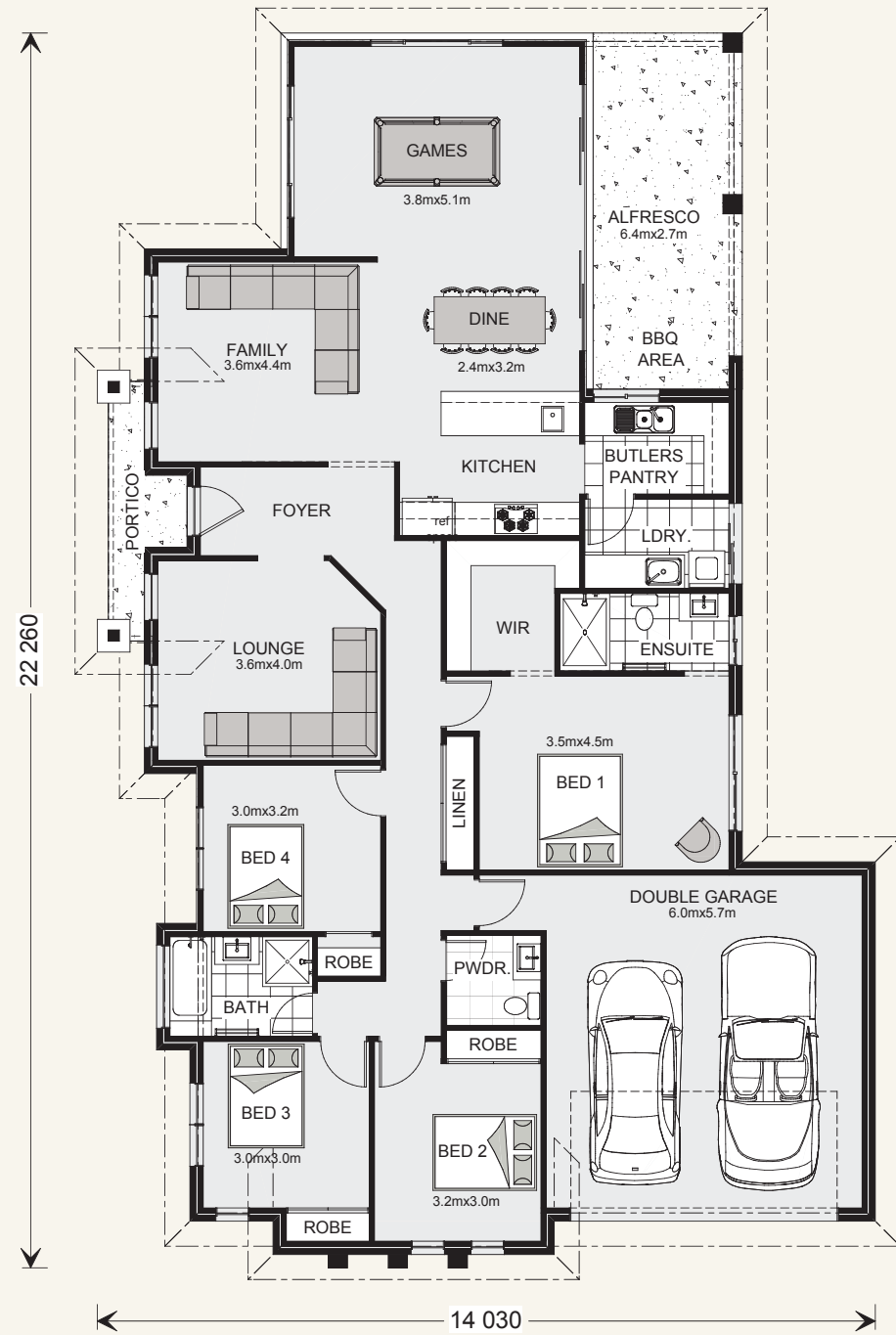
G.J. Gardner. HOMES

Mountain Views 237.



Suits corner & rural sites,
or standard lot width: 29.5m +

Floor sizes - Resort Façade		Alfresco:	17.3 m ²
Living:	177.2 m ²	Portico:	4.0 m ²
Garage:	38.8 m ²	Total:	237.3 m²

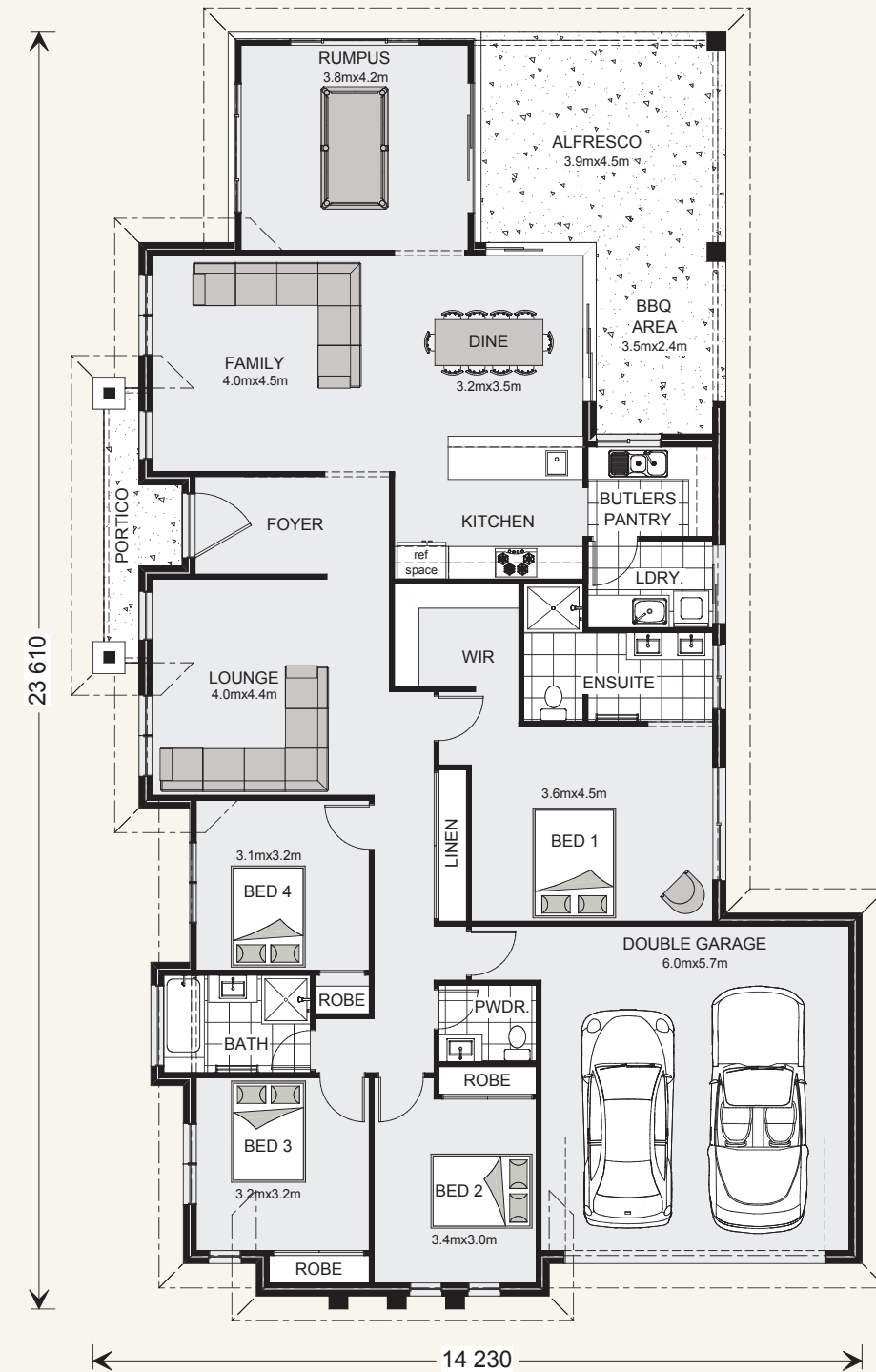


Mountain Views 258.



Suits corner & rural sites,
or standard lot width: 31m +

Floor sizes - Resort Façade		Alfresco:	26.1 m ²
Living:	188.2 m ²	Portico:	4.5 m ²
Garage:	39.0 m ²	Total:	257.8 m²

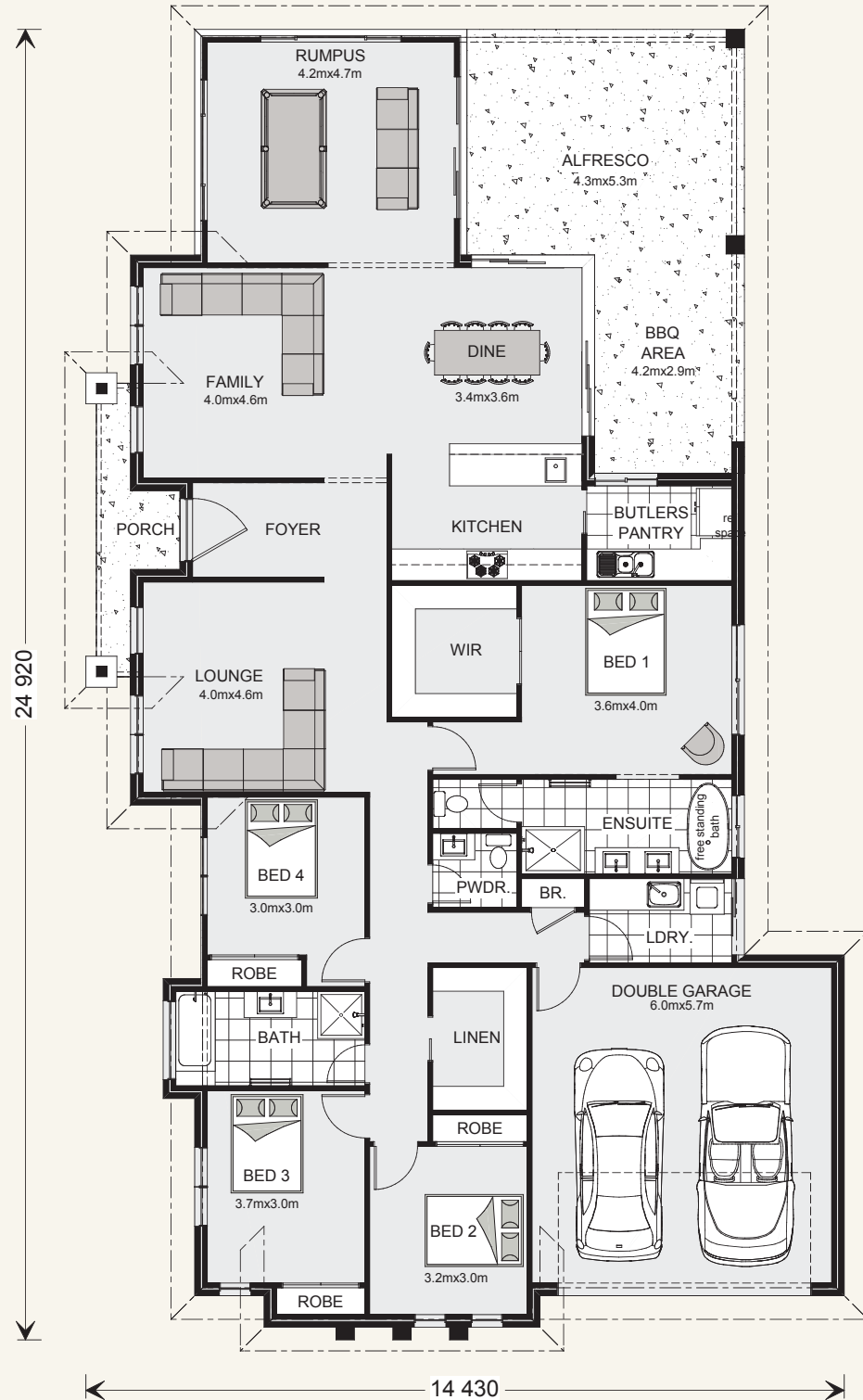


Mountain Views 285.



Suits corner & rural sites,
or standard lot width: 32.5m +

Floor sizes - Resort Façade		Alfresco:	34.5 m ²
Living:	207.6 m ²	Portico:	5.0 m ²
Garage:	37.5 m ²	Total:	284.6 m²



Mountain Views 310.



Suits corner & rural sites,
or standard lot width: 33m +

Floor sizes - Resort Façade		Alfresco:	39.6 m ²
Living:	226.5 m ²	Portico:	5.9 m ²
Garage:	37.9 m ²	Total:	309.9 m²

