



## House and land package from \$480,000\*

Address: 57 Park Avenue, Childers

### Inclusions:

- + Many Alternative Facades Available
- + Fully Installed Septic System Included
- + Quality inclusions throughout
- + 3 step cornice to living areas
- + Exposed aggregate driveway
- + Fixed price contract

## Wide Bay 232 - Element Series

4 2 2

**Give us a call or drop in for a chat today.**

### Office:

Fraser Coast/Bundaberg  
152 Boat Harbour Dr, Hervey Bay Queensland 4655  
QBCC: 1172776

Mark Tyler

New Home Consultant

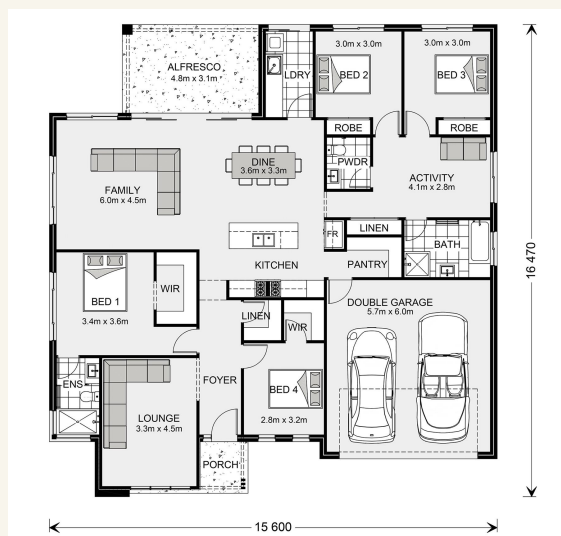
Call: 0467 973 737

Email: [mark.tyler@gjgardner.com.au](mailto:mark.tyler@gjgardner.com.au)

Call: 07 4124 6888

Email: [herveybay@gjgardner.com.au](mailto:herveybay@gjgardner.com.au)

Or visit [gjgardner.com.au](http://gjgardner.com.au)



\*Images and photographs may depict fixtures, finishes and features either not supplied by G.J. Gardner Homes or not included in any price stated. These items include furniture, swimming pools, pool decks, fences, landscaping - including planter boxes, retaining walls, water features, pergolas, screens and decorative landscaping items such as fencing and outdoor kitchens and barbeques. For detailed home pricing, please talk to a new homes consultant.

Welcome **home.**

**G.J. Gardner.** HOMES