



## House and land package from \$439,000\*

Address: 28 Driftwood Close, Jubilee Pocket

### Inclusions:

- + Classic Facade
- + Omega Appliances
- + Quality Tiles & Carpet
- + Ceiling Fans & Fly Screens throughout
- + Reece Tapware
- + Double Lockup Garage with remotes

## Wishart 206 - Express Series

4 2 2

**Give us a call or drop in for a chat today.**

### Office:

Whitsunday

Suite 2, 230 Shute Harbour Rd, Cannonvale QLD 4802

QBCC: 1167764

Lisa Moir

Office Manager

Call: 0409 181 334

Email: [lisa.moir@gjgardner.com.au](mailto:lisa.moir@gjgardner.com.au)

Jonathan Moir

Owner/Builder

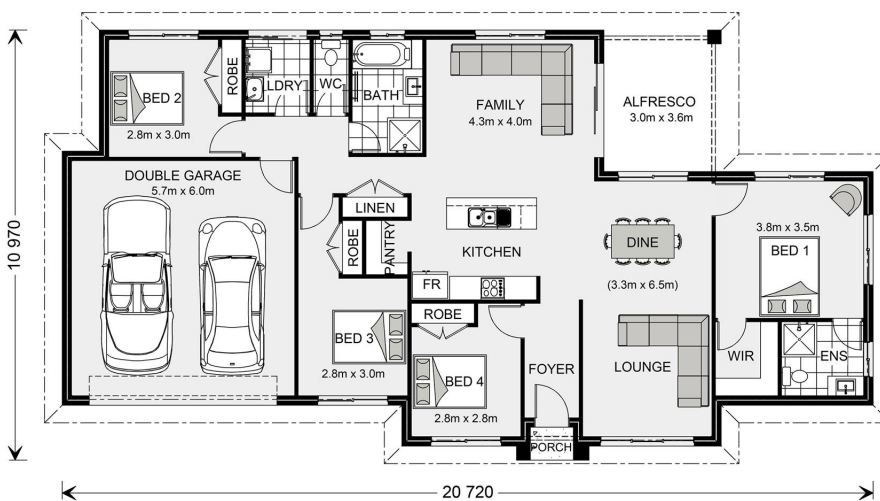
Call: 0407 363 286

Email: [jonathan.moir@gjgardner.com.au](mailto:jonathan.moir@gjgardner.com.au)

Call: 07 4946 5690

Email: [whitsunday@gjgardner.com.au](mailto:whitsunday@gjgardner.com.au)

Or visit [gjgardner.com.au](http://gjgardner.com.au)



\*Images and photographs may depict fixtures, finishes and features either not supplied by G.J. Gardner Homes or not included in any price stated. These items include furniture, swimming pools, pool decks, fences, landscaping - including planter boxes, retaining walls, water features, pergolas, screens and decorative landscaping items such as fencing and outdoor kitchens and barbeques. For detailed home pricing, please talk to a new homes consultant.

Welcome **home.**

**G.J. Gardner.** HOMES