



House and land package from \$435,000*

Address: 10-12 Patten Street, Whyalla

Inclusions:

- + Open plan living
- + Walk in Robe
- + Alfresco Under Main Roof
- + 3 Seperate Living Areas
- + Ensuite to Bedroom 1
- + Seperate lounge room

Claremont - Express Series

4 2 2

Give us a call or drop in for a chat today.

Office:

Port Lincoln

79 Verran Terrace, Port Lincoln South Australia 5606

Tanya DeBono

New Home Consultant

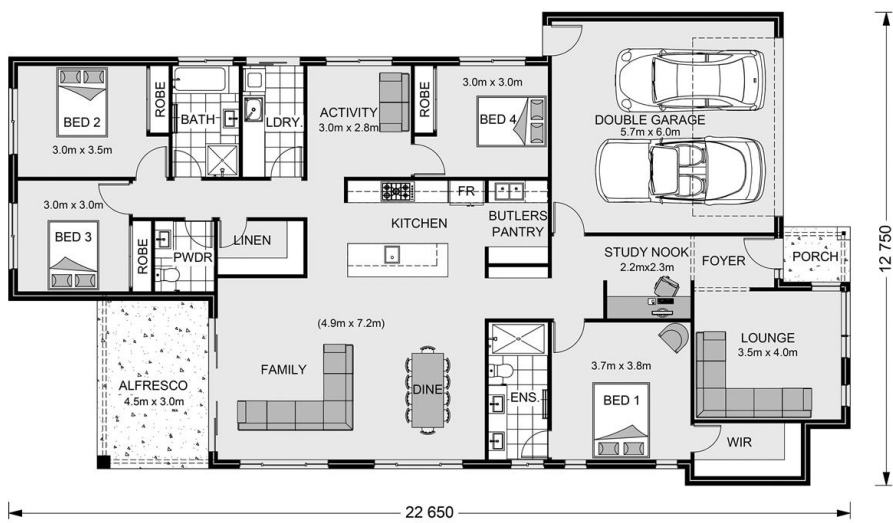
Call: 0457573374

Email: tanya.debono@gjgardner.com.au

Call: (08) 86823709

Email: portlincoln@gjgardner.com.au

Or visit gjgardner.com.au



*Images and photographs may depict fixtures, finishes and features either not supplied by G.J. Gardner Homes or not included in any price stated. These items include furniture, swimming pools, pool decks, fences, landscaping - including planter boxes, retaining walls, water features, pergolas, screens and decorative landscaping items such as fencing and outdoor kitchens and barbeques. For detailed home pricing, please talk to a new homes consultant.

Welcome **home.**

G.J. Gardner. HOMES