

House & Land Package.

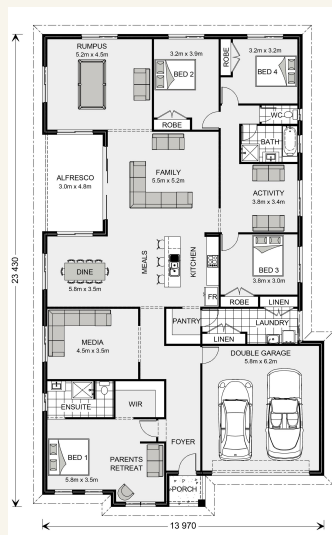


House and land package from \$599,297*

Address: 21 Mitchell Drive, Traralgon

Inclusions:

- + Rumpus
- + Parents retreat
- + Driveway & Cross over Allowance
- + 90 cm westinghouse appliances, including 60 cm Dishwasher
- + Tiled Shower Floor & Niche to both showers
- + Ducted Heating & Cooling through-out



*Images and photographs may depict fixtures, finishes and features either not supplied by G.J. Gardner Homes or not included in any price stated. These items include furniture, swimming pools, pool decks, fences, landscaping - including planter boxes, retaining walls, water features, pergolas, screens and decorative landscaping items such as fencing and outdoor kitchens and barbeques. For detailed home pricing, please talk to a new homes consultant.

Springbrook 300 - Express Series

4 2 2

Give us a call or drop in for a chat today.

Office:

Central Gippsland
85 Macarthur St, Sale VIC 3850
APR Constructions CDB-U 62062

Rheanna Palermo

Sales

Call: 0447763193

Email: rheanna.palermo@gjgardner.com.au

Call: 0408 968 858

Email: centralgippsland@gjgardner.com.au

Or visit gjgardner.com.au

Welcome **home.**

G.J. Gardner. **HOMES**