

House & Land Package.



House and land package from \$604,599*

Address: Lot 4024 Heritage Bay Estate, Corinella

Inclusions:

- + 40m² Plain Concrete Driveway
- + Floor Coverings Throughout
- + Floor Coverings
- + Split System Heating & Cooling
- + Window and Sliding Door Flyscreens
- + Dishwasher

Pacific 230 - Express Series

4  2  2 

Give us a call or drop in for a chat today.

Office:

Bass Coast - Phillip Island
1/219 Settlement Rd, Cowes Vic 3922
Urban Rescue Pty Ltd, CDB-U 48925.

Robyn Gordon

New Home Consultant

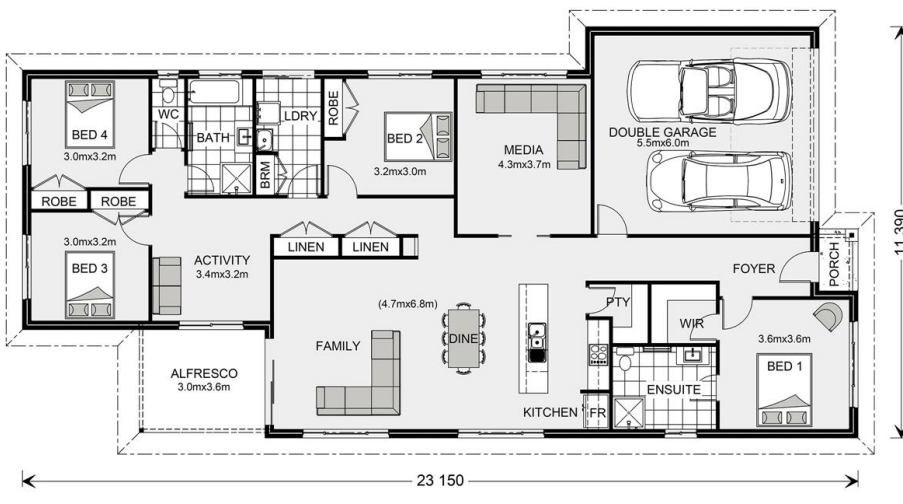
Call: 0437669789

Email: robyn.gordon@gjgardner.com.au

Call: 03 5952 2150

Email: basscoast@gjgardner.com.au

Or visit gjgardner.com.au



*Images and photographs may depict fixtures, finishes and features either not supplied by G.J. Gardner Homes or not included in any price stated. These items include furniture, swimming pools, pool decks, fences, landscaping - including planter boxes, retaining walls, water features, pergolas, screens and decorative landscaping items such as fencing and outdoor kitchens and barbecues. For detailed home pricing, please talk to a new homes consultant.

Welcome **home.**

G.J. Gardner. **HOMES**