

House & Land Package.



House and land package from \$285,000*

Address: 9 Grachan Avenue, George Town

Inclusions:

- + Induction cooking upgrade
- + Modern Window Coverings
- + Quality floor coverings throughout
- + x2 Reverse Cycle Heat Pumps
- + Driveway
- + Clothes Line with 1m Wide path from Laundry

Stonehaven 153 - Express Series

3  2  1 

Give us a call or drop in for a chat today.

Office:

Launceston

3/156 Elphin Rd, Launceston TAS 7250

Craig Daniels

New Home Consultant

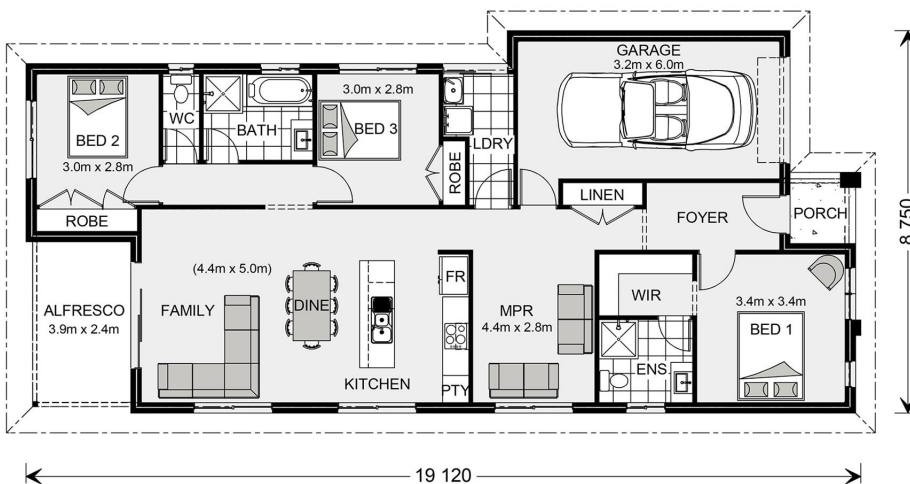
Call: 0488 222 059

Email: craig.daniels@gjgardner.com.au

Call: 03 6334 4777

Email: launceston@gjgardner.com.au

Or visit gjgardner.com.au



*Images and photographs may depict fixtures, finishes and features either not supplied by G.J. Gardner Homes or not included in any price stated. These items include furniture, swimming pools, pool decks, fences, landscaping - including planter boxes, retaining walls, water features, pergolas, screens and decorative landscaping items such as fencing and outdoor kitchens and barbeques. For detailed home pricing, please talk to a new homes consultant.

Welcome **home.**

G.J. Gardner. **HOMES**