



## House and land package from \$292,000\*

Address: 50 Michael Court, Red Cliffs

### Inclusions:

- + Mitsubishi Ducted Reverse Cycle
- + Hamptons Facade
- + Panel Lift door with Remote
- + Dishwasher and TV Antenna
- + Concrete Drive, Crossover and Footpaths
- + Walk in Pantry

## Nova 190 - Express Series

4  2  2 

**Give us a call or drop in for a chat today.**

### Office:

Mildura  
87 Lime Ave, Mildura Vic 3500  
Estilo Pty Ltd, CDB-U 49930.

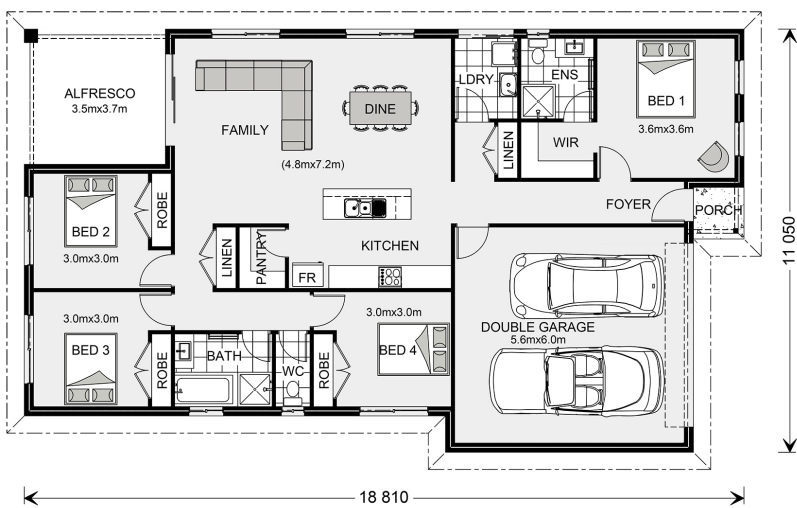
### Call:

Email:

Call: 03 5023 1199

Email: [mildura@gjgardner.com.au](mailto:mildura@gjgardner.com.au)

Or visit [gjgardner.com.au](http://gjgardner.com.au)



\*Images and photographs may depict fixtures, finishes and features either not supplied by G.J. Gardner Homes or not included in any price stated. These items include furniture, swimming pools, pool decks, fences, landscaping - including planter boxes, retaining walls, water features, pergolas, screens and decorative landscaping items such as fencing and outdoor kitchens and barbecues. For detailed home pricing, please talk to a new homes consultant.

Welcome **home.**

**G.J. Gardner.** HOMES