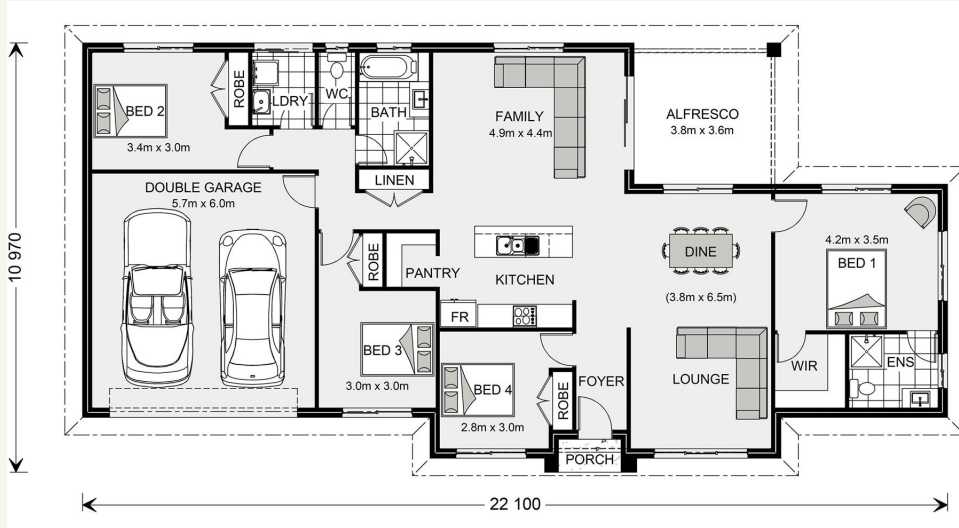


House and land package from \$463,000*

Address: 29 Saddlebag Court (off Overlander Ave), Chatsworth

Inclusions:

- + Household Sewerage Treatment Plant
- + 45000Lt water tanks, pressure pump and plumbed
- + Mains power to home site - 20m
- + Open plan living, dining and kitchen with walk in pantry
- + Alfresco area
- + Express Inclusions



*Images and photographs may depict fixtures, finishes and features either not supplied by G.J. Gardner Homes or not included in any price stated. These items include furniture, swimming pools, pool decks, fences, landscaping - including planter boxes, retaining walls, water features, pergolas, screens and decorative landscaping items such as fencing and outdoor kitchens and barbeques. For detailed home pricing, please talk to a new homes consultant.

Wishart 206 - Express Series

4 2 2

Give us a call or drop in for a chat today.

Office:

Gympie

191 Mary St, Gympie Queensland 4570

QBCC: 1285235

Call:

Email:

Call: 07 5482 3444

Email: gympie@gjgardner.com.au

Or visit gjgardner.com.au

Welcome **home.**

G.J. Gardner. **HOMES**